



18508/177-219 Mitchell Road Erskineville NSW

2  2  2 

Located on the 5th floor, this 143 sqm two bedroom, two bathroom apartment with study & two secure car spaces is situated in one of the best resort style complexes in Sydney's inner west. Offering an abundance of both in/outdoor space it also features a versatile floor plan & ideal aspect w/ ample natural light.

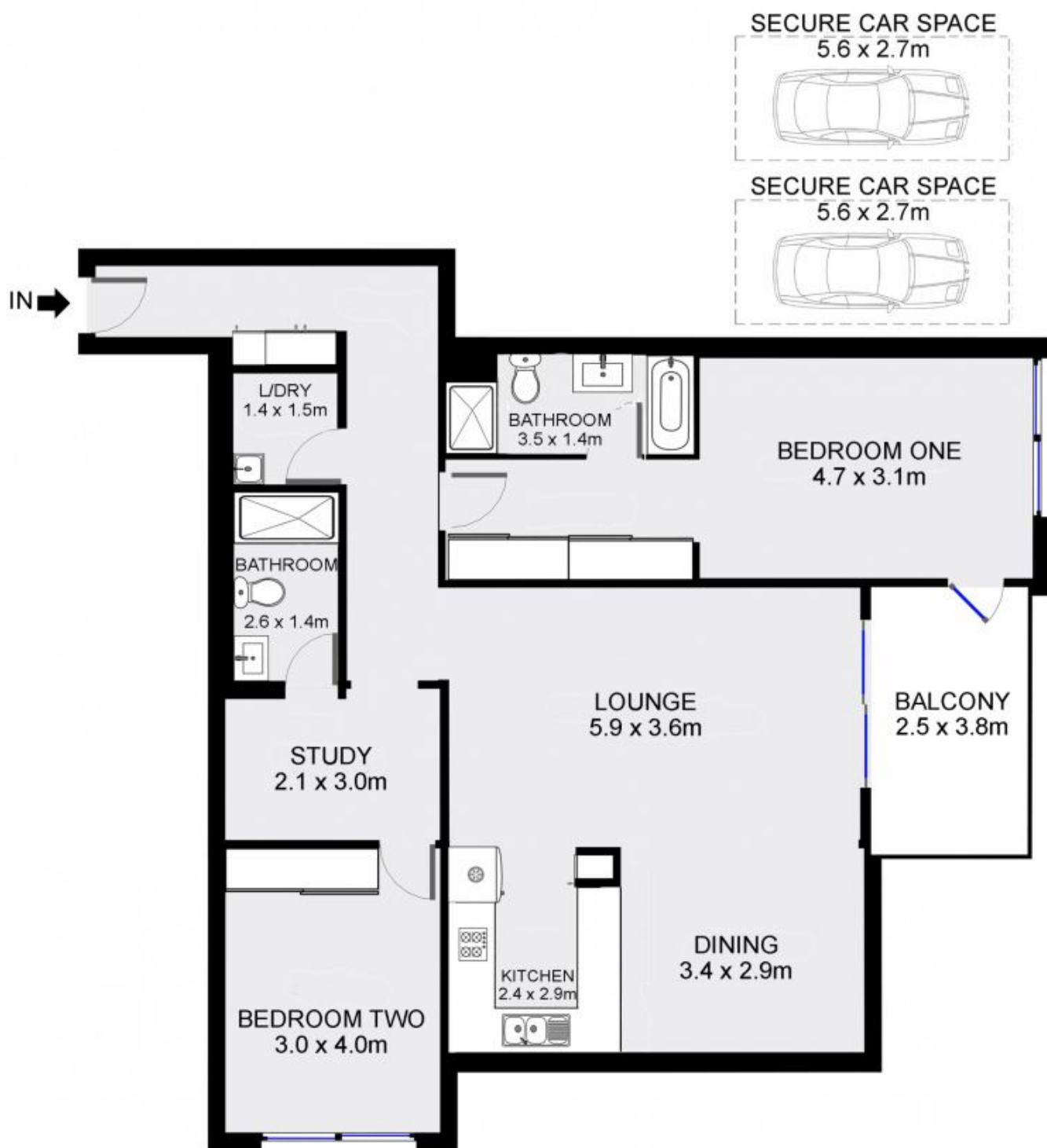
Extra large main bedroom w/ oversized double BIR, ensuite & direct balcony access
Generous open plan lounge/dining flowing onto the large entertainers' balcony
Modern gourmet kitchen w/ gas cooking, dishwasher & pull-out pantry
Stylish bathrooms including bath tub & separate laundry w/ dryer
Separate study area & generous storage space throughout
Spacious second bedroom with BIR & leafy outlook

Price : \$ 945,000

View : <https://www.parkproperties.com.au/sale/nsw/inner-west/erskineville/residential/apartment/3310021>



Melissah McCaffery J P
02 9565 5333



FIFTH FLOOR

18508/177-219 Mitchell Road, Erskineville

