



**3802/177-219 Mitchell Road Erskineville NSW**

1  1  1 

Eight stories up in the sought-after Sydney Park Village complex, this naturally light filled apartment offers oversized living space and a versatile open plan layout coupled with optimum privacy and tranquil views of both lush greenery and the cityscape. Idyllic resort living at its optimum, this is a rare opportunity to own an unsurpassable slice of the inner west.

**Price** : \$ 722,000

**View** : <https://www.parkproperties.com.au/sale/nsw/inner-west/erskineville/residential/apartment/3296931>

Generously proportioned open plan living & dining area  
Well-appointed gas kitchen w/ s/s appliances  
Sun drenched bedroom w/ BIR & private leafy outlook  
Stylish bathroom w/ tub & integrated laundry facilities  
Internal facing sundrenched balcony w/ complex & district views  
Secure car space, visitor parking & 24/7 on-site security

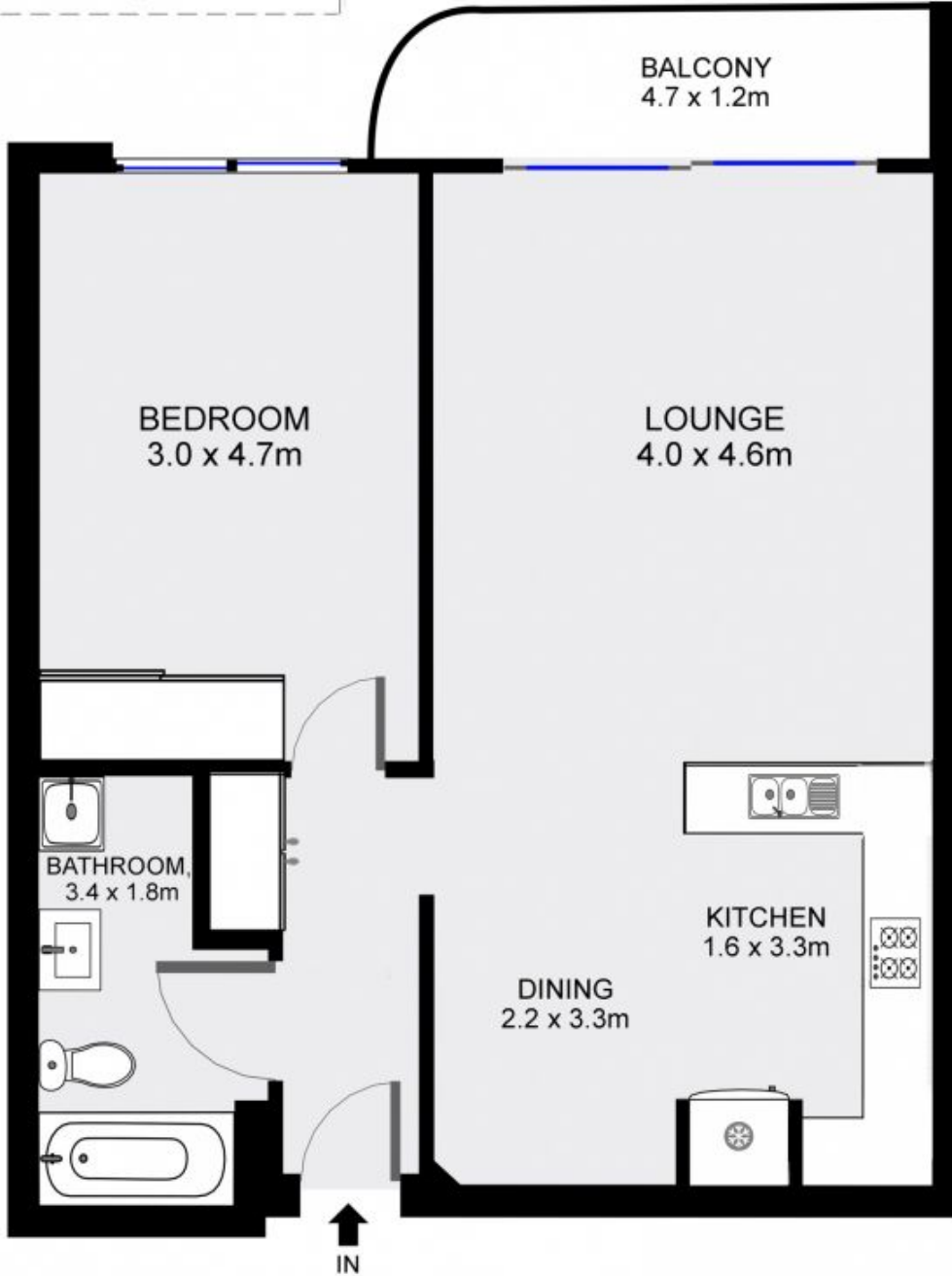
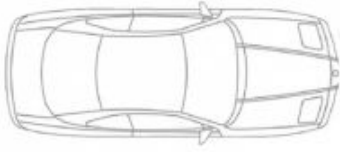


**Michael McCaffery**  
02 9565 5333

Placed just steps from the hip Erskineville Village, the eat

**SECURE CAR SPACE**

5.6 x 2.7m



**EIGHTH FLOOR**

**3802/177-219 Mitchell Road, Erskineville**

