

17511/177-219 Mitchell Road Erskineville NSW

1  1  1 

This internal facing one bedroom plus study apartment of oversized proportions offers a versatile, open plan layout w/ a generous sized balcony, perfect for entertaining & relaxing in privacy.

Price : \$ 725,000

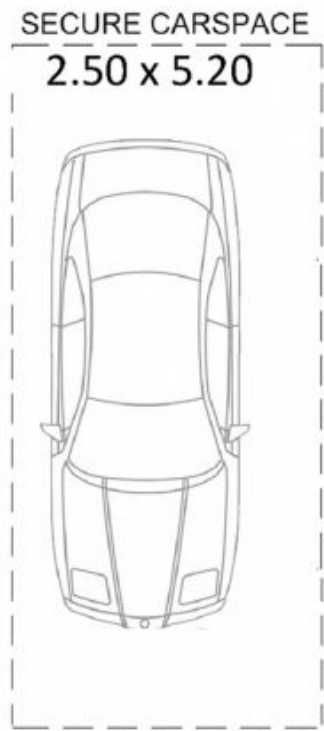
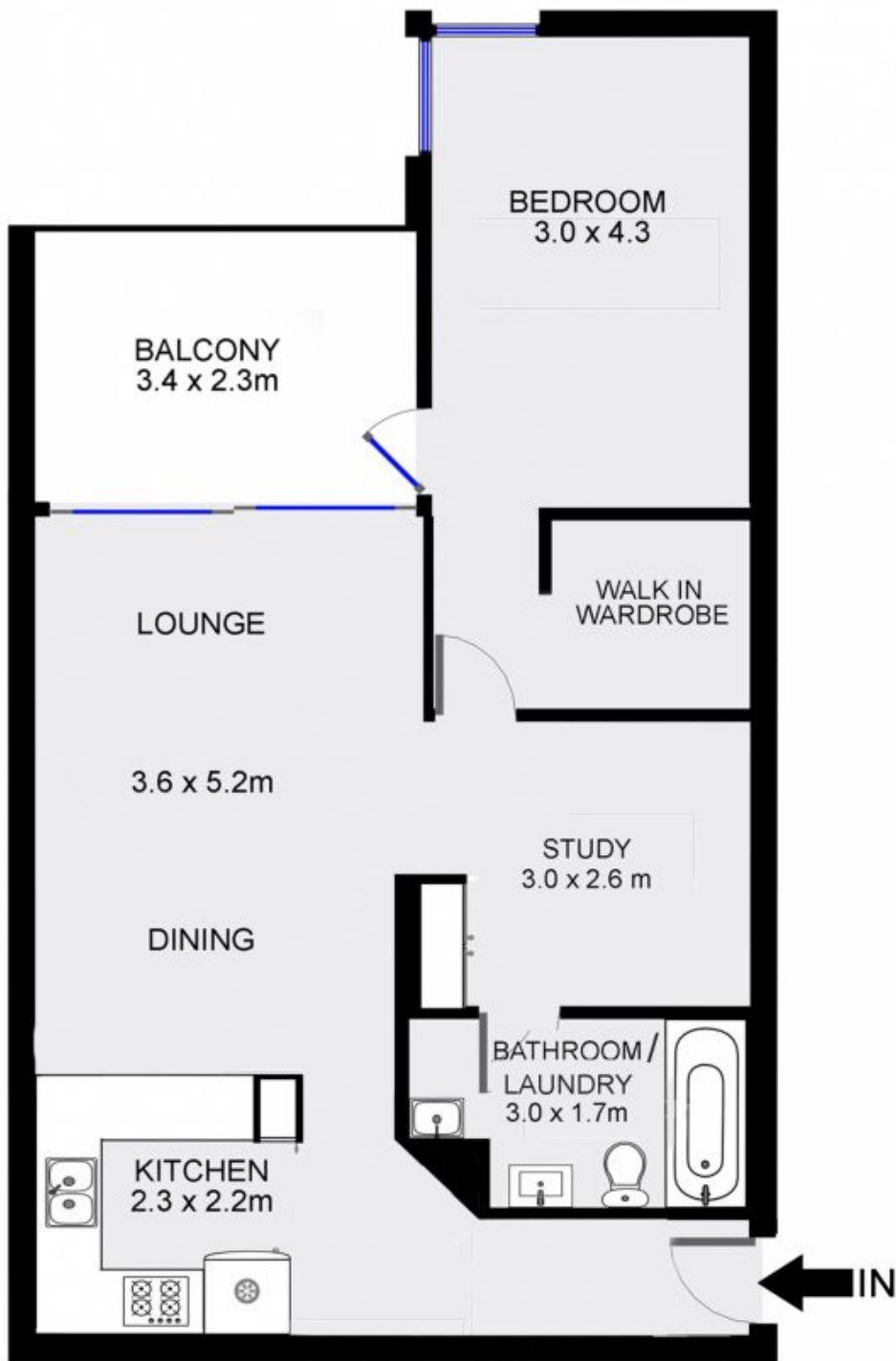
View : <https://www.parkproperties.com.au/sale/nsw/inne-r-west/erskineville/residential/apartment/3283615>

Modern gas kitchen w/ s/s appliances
Spacious open plan lounge & dining w/ AC
Bedroom w/ walk in robe & balcony access
Separate study, perfect for home office or nursery
Full bathroom w/ integrated laundry facilities
Good sized entertainers balcony w/ leafy outlook
Secure undercover car space & ample visitor parking
Intercom access & 24 hour on-site security



Melissah McCaffery J P
02 9565 5333

Placed just steps from the hip Erskineville Village, the eat streets of King and Crown Streets and minutes to The Grounds, Campos, Rosetta Stone Bakery, Bread & Circus,



FIFTH FLOOR

17511/177-219 Mitchell Road, Erskineville

