



18604/177-219 Mitchell Road ERSKINEVILLE NSW

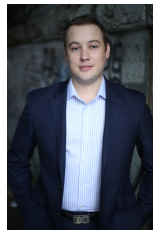
1  1 

Featuring sprawling city views, this top floor north facing one bedroom, one bathroom apartment is located within the acclaimed Sydney Park Village complex.

Price : \$ 530

View : <https://www.parkproperties.com.au/lease/nsw/inner-west/erskineville/residential/apartment/3280088>

- Light filled open plan lounge & dining
- Designer gas kitchen w stainless steel appliances
- Well-appointed bedroom w built-in robes
- Stylish bathroom w tub & internal laundry w dryer
- North facing entertainers balcony w city views
- Generous storage & ample visitor parking



Beau McCaffery
02 9565 5333

Placed just steps from the hip Erskineville Village, the eat streets of King and Crown Streets and minutes to The Grounds, Campos, Rosetta Stone Bakery, Bread & Circus, and Fratelli Fresh, Sydney Park Village is one of the most sought after resort style buildings in inner Sydney. Offering incomparable facilities including outdoor pool, two tennis