



**10501/177-219 Mitchell Road Erskineville NSW**

2  2  1 

Located amongst the exemplary gardens of one of the best complexes in Sydney's inner west, this apartment offers the perfect synthesis of the vibrancy of Erskineville & resort style living. With the most highly sought after aspect in the complex, this apartment is perched high on the 5th floor and offers 111sqm of low maintenance, comfortable living & entertaining space.

Sunny internal facing balcony enjoying views of the complex gardens & facilities  
Two double bedrooms, master w/ walk in robe & ensuite  
Mosaic tiled bathroom w/ bathtub  
Open plan gas kitchen w/ s/s appliances including dishwasher  
Separate Internal laundry w/ dryer  
Undercover security car space, next to the lift and on title  
Photos used are of a similar apartment/floorplan

**Price** : \$ 0

**View** : <https://www.parkproperties.com.au/sale/nsw/inner-west/erskineville/residential/apartment/3257410>



**Melissah McCaffery J P**  
**02 9565 5333**

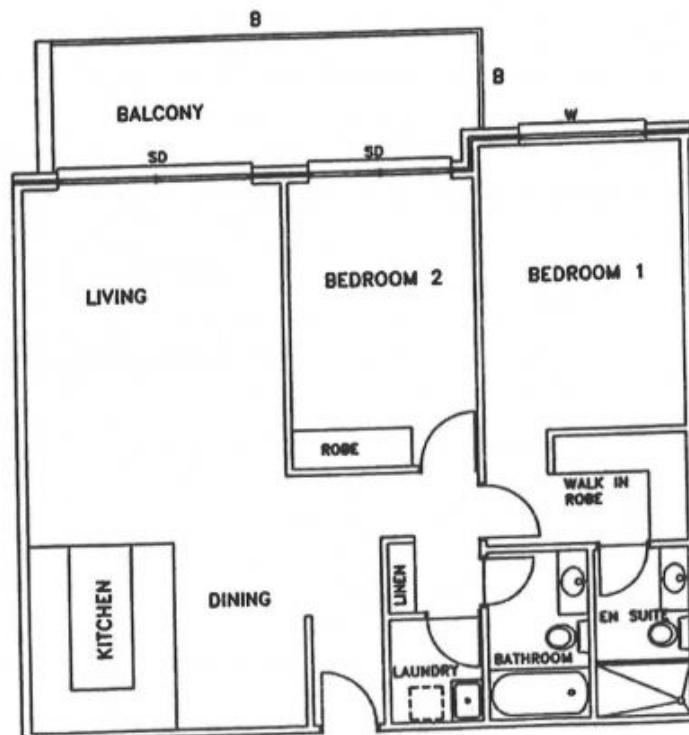
# SYDNEY PARK VILLAGE PARKVIEW TOWERS

117-219 MITCHELL ROAD  
ALEXANDRIA  
SYDNEY NSW AUSTRALIA



2 BEDROOM  
APARTMENT  
10-501

STRATA # 57



THIS PLAN SHOULD BE READ IN CONJUNCTION  
WITH THE CONTRACT FOR SALE INCLUDING BUT  
NOT LIMITED TO THE SCHEDULE OF FINISHES AND  
ADDITIONAL CONDITIONS 23, 26, 27 AND 43.3

SALES PLAN  
SPV4: 10-501  
ISSUE: C  
DATED: 20/6/1999