



17408/177-219 Mitchell Road Erskineville NSW

1  1  1 

This one bedroom plus study apartment encompasses the essence and convenience of urban living. Boasting resort style facilities, close proximity to transport links and inner west charm, this city fringe pad offers a rare opportunity to purchase in this tightly held complex.

Versatile open plan living & dining area
Well-appointed gas kitchen w/ s/s appliances
Sun drenched bedroom w/ BIR & balcony access
Separate study area perfect for home office
Stylish bathroom w/ tub & internal laundry
North facing entertainers balcony w/ private leafy outlook
Security car space, visitor parking & 24/7 on-site security

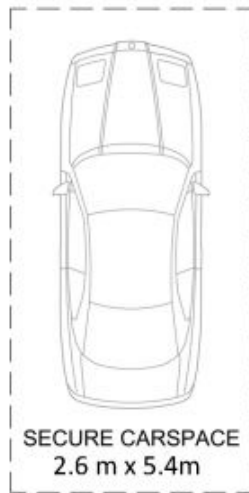
Placed just steps from the hip Erskineville Village, the eat streets of King and Crown Streets and minutes to The Grounds, Campos, Rosetta Stone Bakery, Bread & Circus,

Price : \$ 673,000

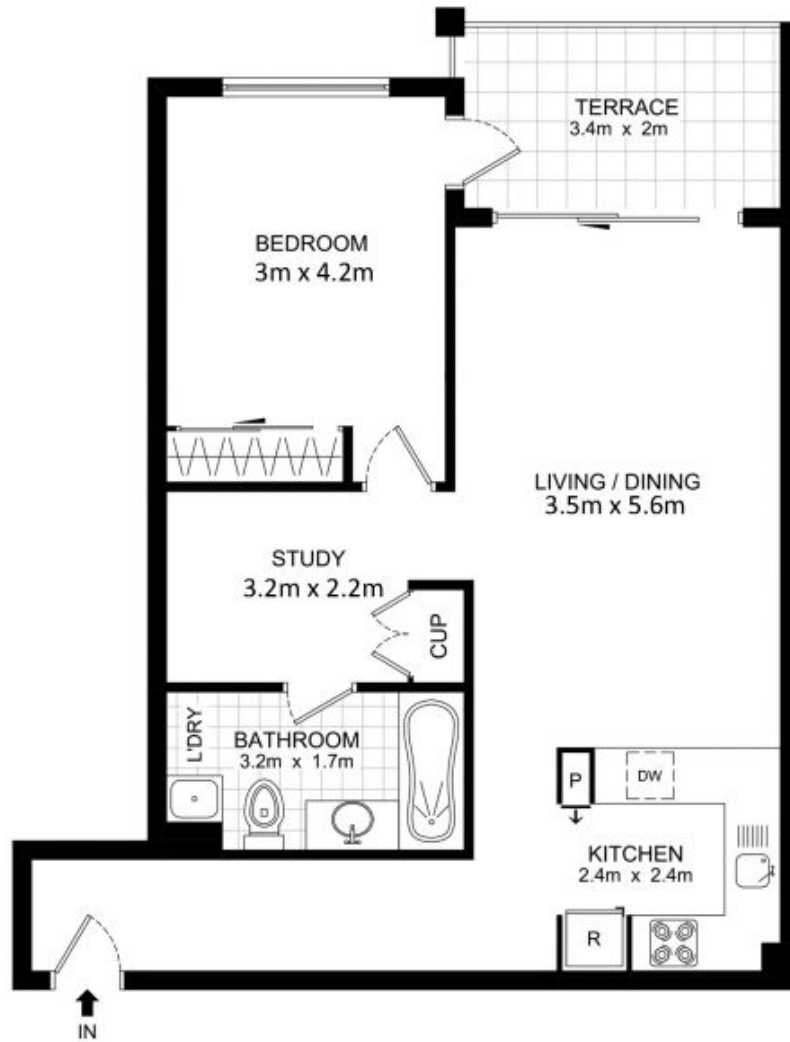
View : <https://www.parkproperties.com.au/sale/nsw/inner-west/erskineville/residential/apartment/3191349>



Michael McCaffery
02 9565 5333



BASEMENT



LEVEL FOUR



17408 / 177-219 Mitchell Road, Erskineville



DISCLAIMER: THIS PLAN IS FOR ILLUSTRATIVE PURPOSES ONLY. DIMENSIONS ARE APPROXIMATE AND IT DOES NOT CONSTITUTE PART OF ANY LEGAL DOCUMENTS. POSSES ONLY. DIMENSIONS ARE APPROXIMATE AND IT DOES NOT CONSTITUTE PART OF ANY LEGAL DOCUMENTS.