






**233 Queen Street Beaconsfield NSW**

3  2  1 

Sitting nestled in one of Beaconsfield's most charming tree-lined streets, this three bedroom townhouse offers a versatile tri-level design that fully maximises the space and abundance of natural light. Enjoying a north west aspect coupled with oversized living space and an in/outdoor flow that allows for relaxation and entertaining- this is the perfect hybrid of city living meets community suburban charm.

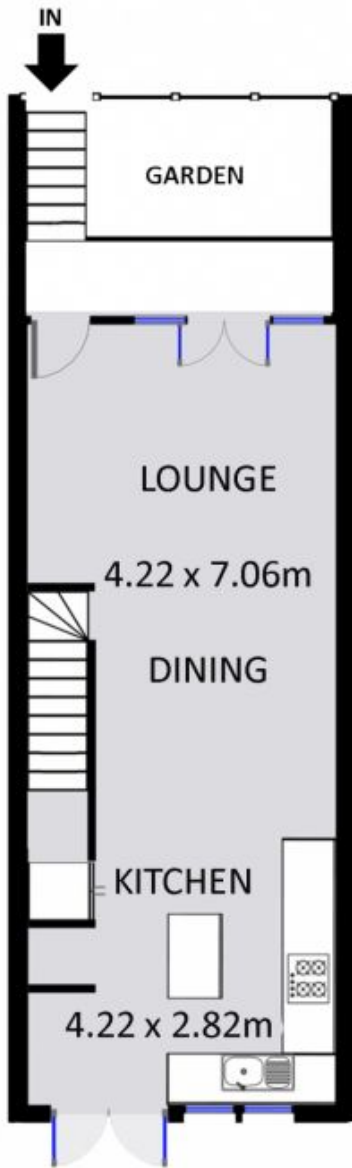
Expansive open plan living & dining w/ French doors both front & back  
Granite kitchen w/ island bench, s/s appliances & plentiful storage  
Easy care back garden w/ sun-drenched entertainers terrace & optimum privacy  
Three generous bedrooms, master w/ ensuite & private balcony access

**Price** : \$ 1,352,000

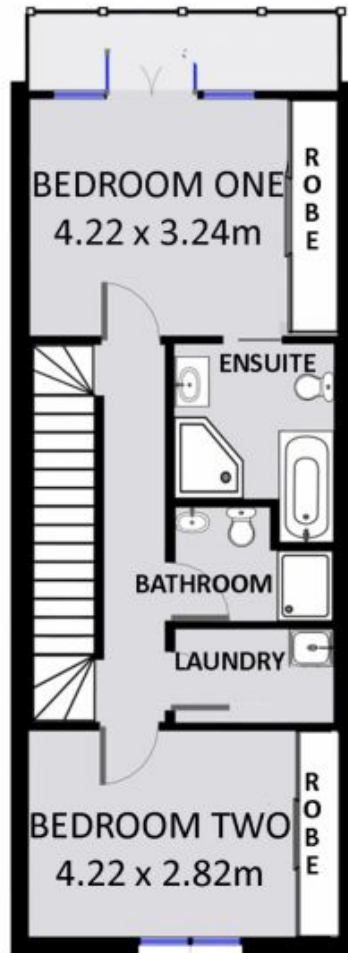
**View** : <https://www.parkproperties.com.au/sale/nsw/inne-r-west/beaconsfield/residential/townhouse/3147081>



**Michael McCaffery**  
02 9565 5333



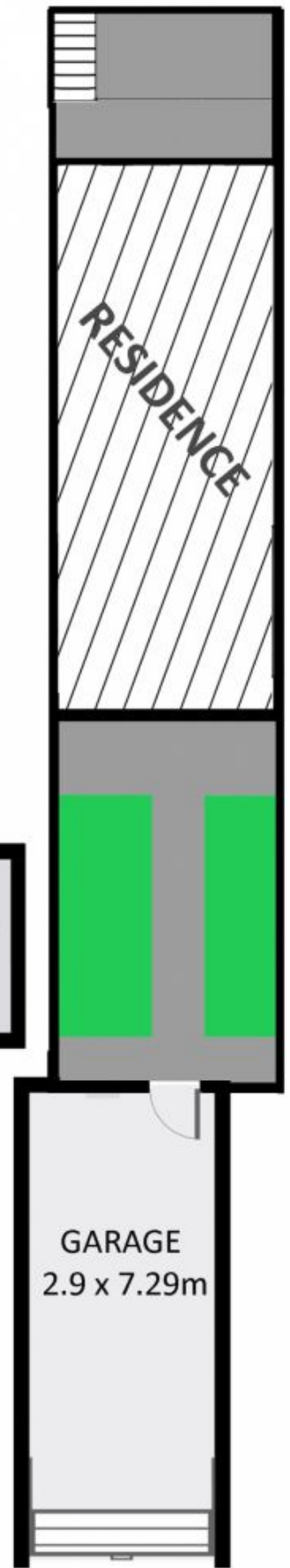
**GROUND FLOOR**



**LEVEL TWO**



**LEVEL THREE**



**SITE PLAN**



# 233 Queen Street, Beaconsfield

