



17304/177-219 Mitchell Road ERSKINEVILLE NSW

3  2  2 

Perfectly positioned in the acclaimed Sydney Park Village, this large three bedroom apartment with two secure car spaces offers open plan living and an ideal corner northerly aspect. Showcasing space, style and a versatile floor plan, this property features stylish modern finishes and a private leafy outlook.

Price : \$ 850

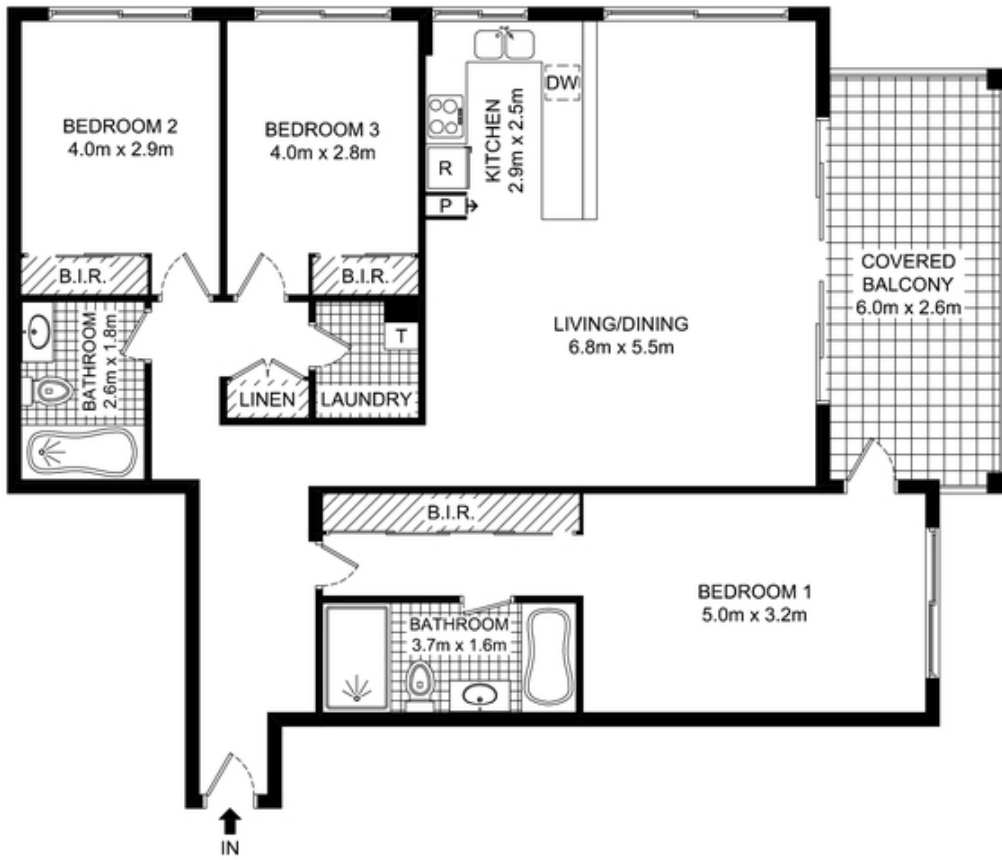
View : <https://www.parkproperties.com.au/lease/nsw/inner-west/erskineville/residential/apartment/3102910>

Oversized open plan lounge & dining area
Fully equipped designer gas kitchen w dishwasher
Light filled wrap-around terrace perfect for entertaining
Large main bedroom w double built-ins & ensuite
Generous second & third bedrooms both w built-ins
Stylish bathroom w tub & separate laundry w dryer
Two secure car spaces & ample visitor parking

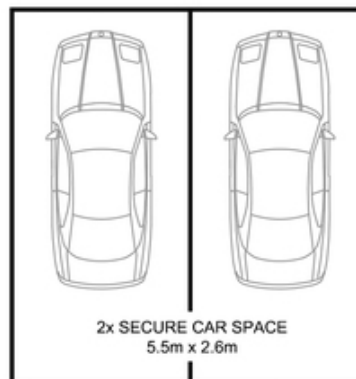


Beau McCaffery
02 9565 5333

Placed just steps from the hip Erskineville Village, the eat streets of King and Crown Streets and minutes to The



LEVEL 2



BASEMENT

17204/177-219 Mitchell Road, Erskineville

DISCLAIMER: THIS PLAN IS FOR ILLUSTRATIVE PURPOSES ONLY. DIMENSIONS ARE APPROXIMATE AND IT DOES NOT CONSTITUTE PART OF ANY LEGAL DOCUMENTS.

