



9412/177-219 Mitchell Road Erskineville NSW

1  1  1 

Move straight in and enjoy resort style living. Quietly set in the sought after Sydney Park Village, this unique and larger than standard one bedroom apartment with parking offers an ultra convenient lifestyle address

Price : \$ 652,000

View : <https://www.parkproperties.com.au/sale/nsw/inne-r-west/erskineville/residential/apartment/3015538>

Oversized, open plan living & dining
Fully equipped gas kitchen w/ ample storage
Spacious double bedroom w/ built-in
Full bathroom w/ tub & separate laundry
Private balcony w/ a leafy outlook to gardens
Security complex w/ intercom access & security car space

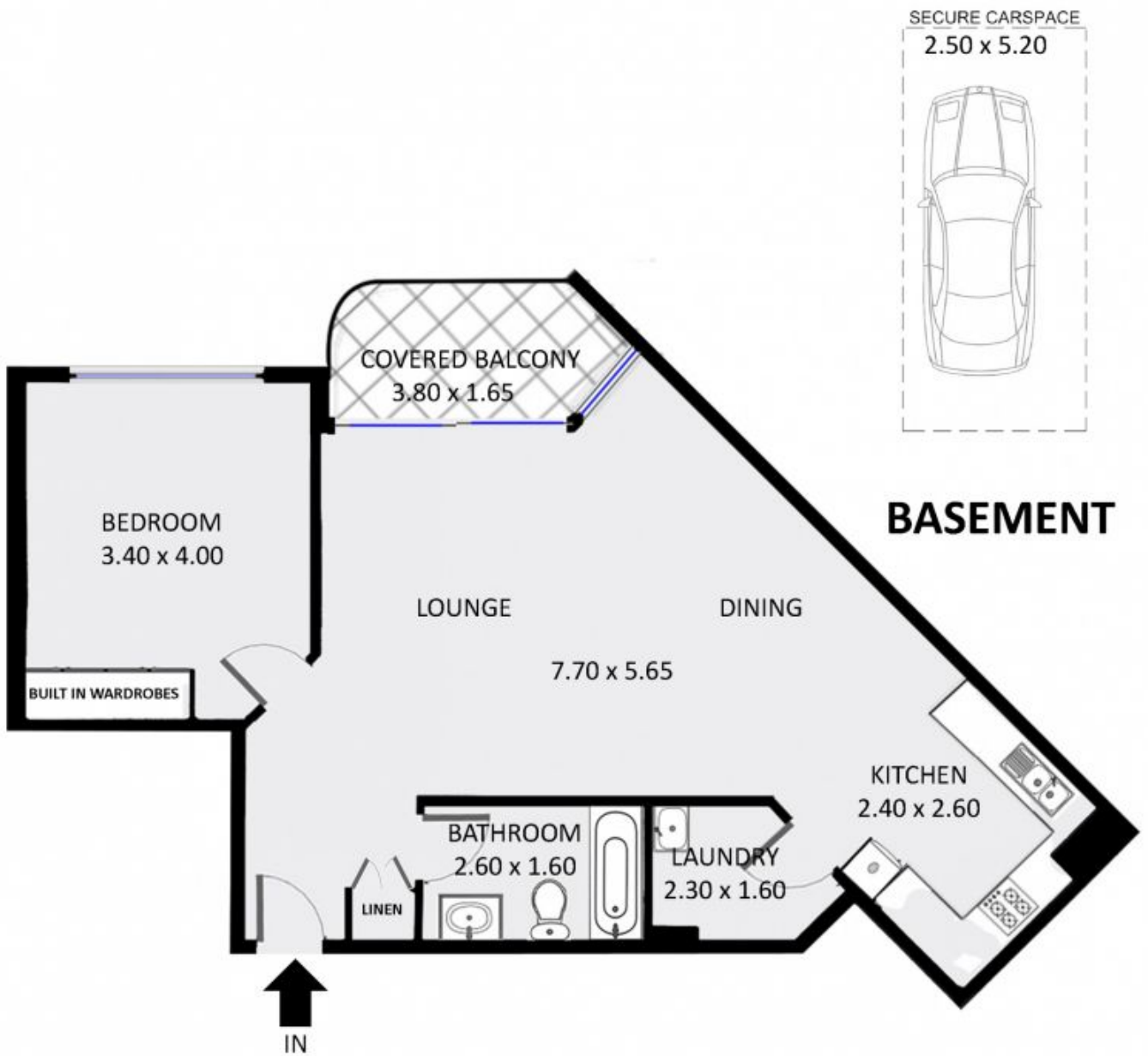


Michael McCaffery
02 9565 5333



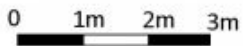
Melissah McCaffery J P
02 9565 5333

Placed just steps from the hip Erskineville Village, the eat streets of King and Crown Streets and minutes to The Grounds, Campos, Rosetta Stone Bakery, Bread & Circus, and Fratelli Fresh, Sydney Park Village is one of the most sought after resort style buildings in inner Sydney. Offering



BASEMENT

LEVEL FOUR



9412 / 177-219 Mitchell Road, Erskineville

DISCLAIMER: THIS PLAN IS FOR ILLUSTRATIVE PURPOSES ONLY. DIMENSIONS ARE APPROXIMATE AND IT DOES NOT CONSTITUTE PART OF ANY LEGAL DOCUMENTS. POSES ONLY. DIMENSIONS ARE APPROXIMATE AND IT DOES NOT CONSTITUTE PART OF ANY LEGAL DOCUMENTS.