






609/18-20 Pelican Street Surry Hills NSW

2  2  1 

Offering sundrenched interiors from the impressive floor-to-ceiling glass throughout, this versatile two bedroom apartment with an underground secure car space has the ultimate city feel. Situated in the decidedly cool Monument complex in the heart of the Surry Hills district and with contemporary appeal, enjoy the convenience that this inner city address has to offer.

Open plan living & dining w/ sophisticated finishes throughout
Gourmet kitchen w/ oversized stone benchtops & s/s appliances
Corner balcony perfect for enjoying the city sunsets
Sun-drenched bedrooms, main w/ WIR & ensuite
Ultramodern main bathroom & separate laundry facilities
Resort-style facilities including heated outdoor pool & gym
Security and pet friendly complex w/ undercover car space

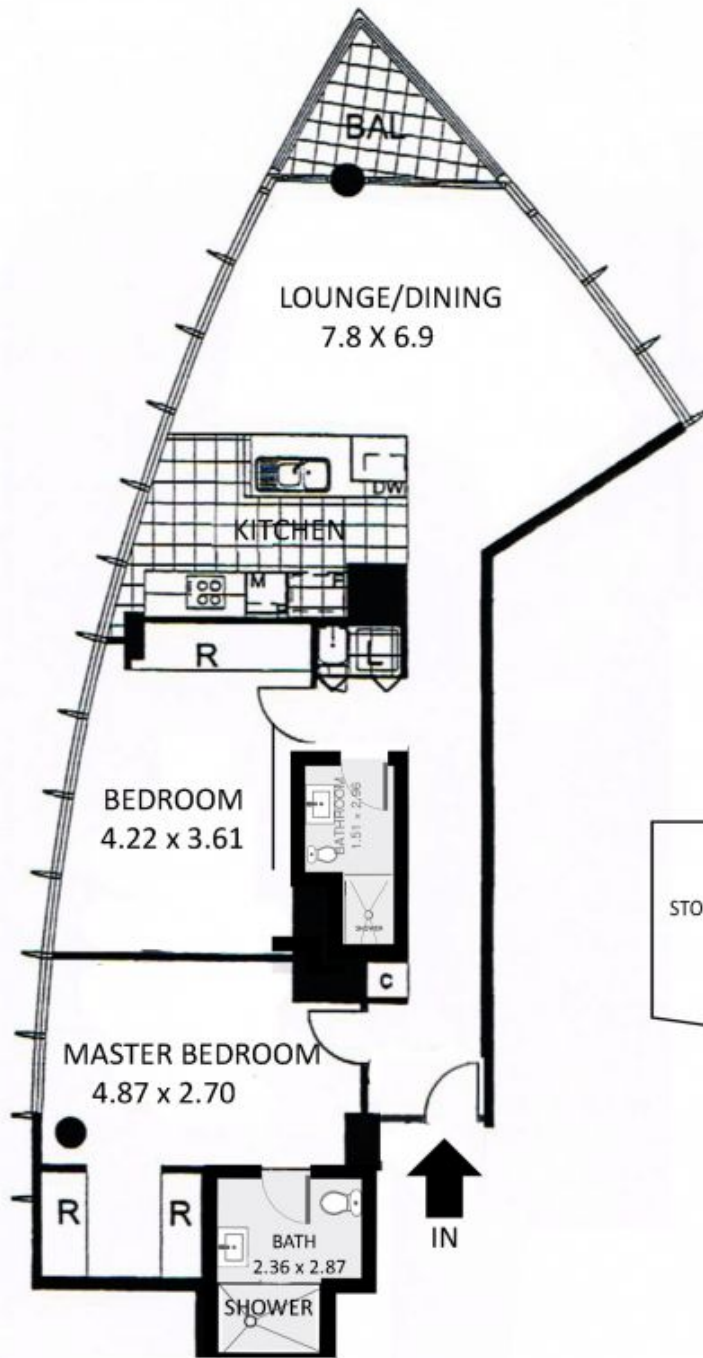
Land Size : 116 sqm
View : <https://www.parkproperties.com.au/sale/nsw/eastern-suburbs/surry-hills/residential/apartment/3006809>



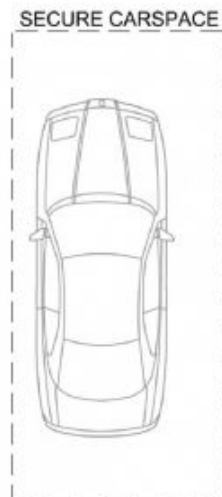
Melissah McCaffery J P
02 9565 5333



Michael McCaffery
02 9565 5333



LEVEL SIX



BASEMENT

0 1 2 3m
1:71



609 / 18 - 20 Pelican Street, Surry Hills

DISCLAIMER: THIS PLAN IS FOR ILLUSTRATIVE PURPOSES ONLY. DIMENSIONS ARE APPROXIMATE AND IT DOES NOT CONSTITUTE PART OF ANY LEGAL DOCUMENTS. POSSES ONLY. DIMENSIONS ARE APPROXIMATE AND IT DOES NOT CONSTITUTE PART OF ANY LEGAL DOCUMENTS.