



2316/8 Eve Street Erskineville NSW

1  1 

Showcasing impressive floor to ceiling windows that effectively frame and fill the space with an abundance of natural light, this is not your average one bedroom apartment. Set within the 'Motto' complex designed by Allen Jack+Cottier Architects, this dual level home is the perfect opportunity to secure a slice of the ever popular inner west.

Designer full size gas kitchen w/ integrated appliances
Sun drenched living/dining w/ floor to ceiling windows
Warm, sun filled and covered entertainers terrace
Mezzanine level w/ double bedroom and double built-in
Modern full bathroom w/ laundry facilities

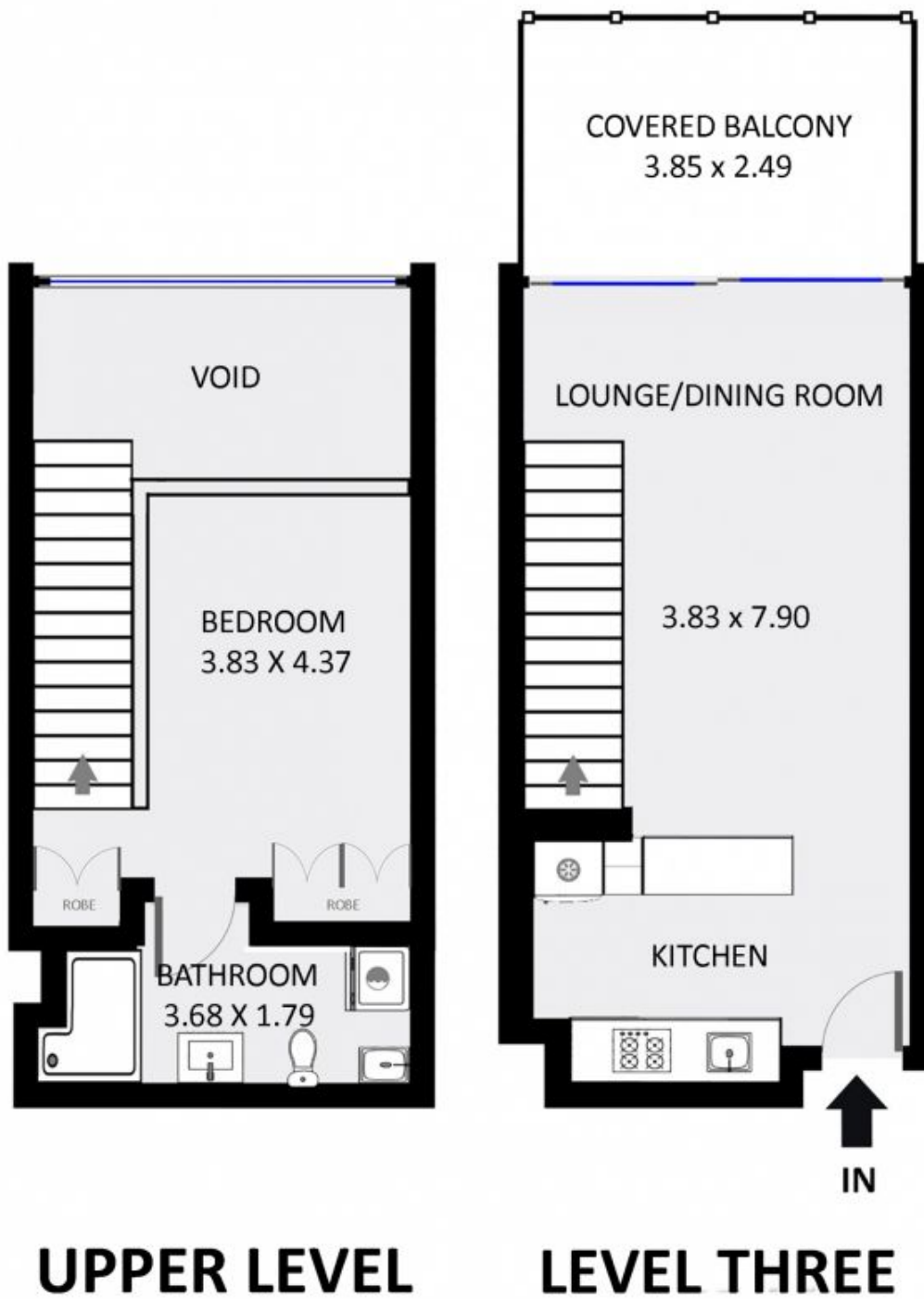
Motto boasts excellent convenience being walking distance to the vibrant bars and restaurants in both Erskineville & Newtown. With quick city links at your door step - enjoy the

Price : \$ 615,000

View : <https://www.parkproperties.com.au/sale/nsw/inner-west/erskineville/residential/apartment/2978097>



Melissah McCaffery J P
02 9565 5333



0.0 0.5 1.0 1.5 2.0 2.5m
1:58

2316/8 Eve Street, Erskineville

DISCLAIMER: THIS PLAN IS FOR ILLUSTRATIVE PURPOSES ONLY. DIMENSIONS ARE APPROXIMATE AND IT DOES NOT CONSTITUTE PART OF ANY LEGAL DOCUMENTS. POSES ONLY. DIMENSIONS ARE APPROXIMATE AND IT DOES NOT CONSTITUTE PART OF ANY LEGAL DOCUMENTS.