



**16606/177-219 Mitchell Road Erskineville NSW**

1  1  1 

Positioned on the top floor with a prized Northerly aspect, this one bedroom + study apartment enjoys ultimate privacy and sundrenched interiors. Combining a well configured floorplan and the impressive entertainer's terrace with city skyline views, take advantage of this opportunity to either occupy or invest in this lucrative development.

Impressive North facing terrace  
Open plan in/outdoor living  
Modern gas kitchen w/ s/s appliances  
Main bedroom w/ BIR & city views  
Separate versatile study  
Full bathroom w/ tub and laundry facilities  
Security car space & intercom access

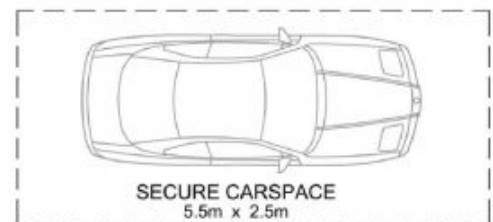
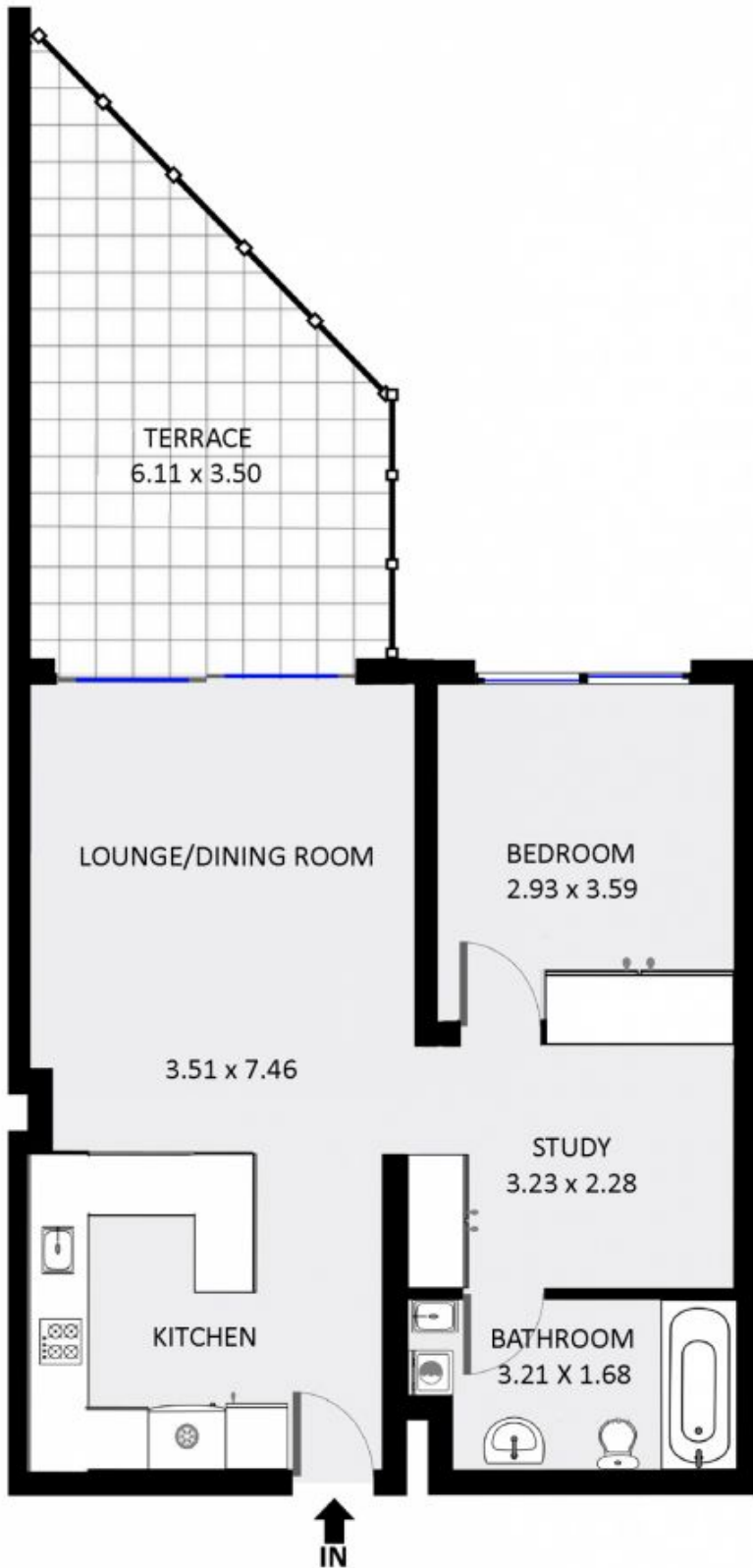
Placed just steps from the hip Erskineville Village, the eat

**Price** : \$ 690,000

**View** : <https://www.parkproperties.com.au/sale/nsw/inner-west/erskineville/residential/apartment/2961947>



**Melissah McCaffery J P**  
**02 9565 5333**



TOP FLOOR

BASEMENT



0.0 0.5 1.0 1.5m  
1:38

16606/177-219 Mitchell Road, Erskineville

DISCLAIMER: THIS PLAN IS FOR ILLUSTRATIVE PURPOSES ONLY. DIMENSIONS ARE APPROXIMATE AND IT DOES NOT CONSTITUTE PART OF ANY LEGAL DOCUMENTS. POSES ONLY. DIMENSIONS ARE APPROXIMATE AND IT DOES NOT CONSTITUTE PART OF ANY LEGAL DOCUMENTS.