



7603/177-219 Mitchell Road Erskineville NSW

2  **2**  **1** 

Boasting a generous and versatile floor plan, this sixth floor apartment features a bright easterly aspect and great entertainer's layout. With sun-drenched interiors enhanced by the two oversized bedrooms - enjoy this peaceful yet urban address.

Generous open plan living/dining
Gas kitchen w/ s/s appliances
Main bedroom w/ WIR & ensuite
Spacious second bedroom w/ BIR
Main bathroom w/ tub & separate laundry
Entertainer's balcony w/ complex views
Intercom access and visitor parking
Secure underground car space

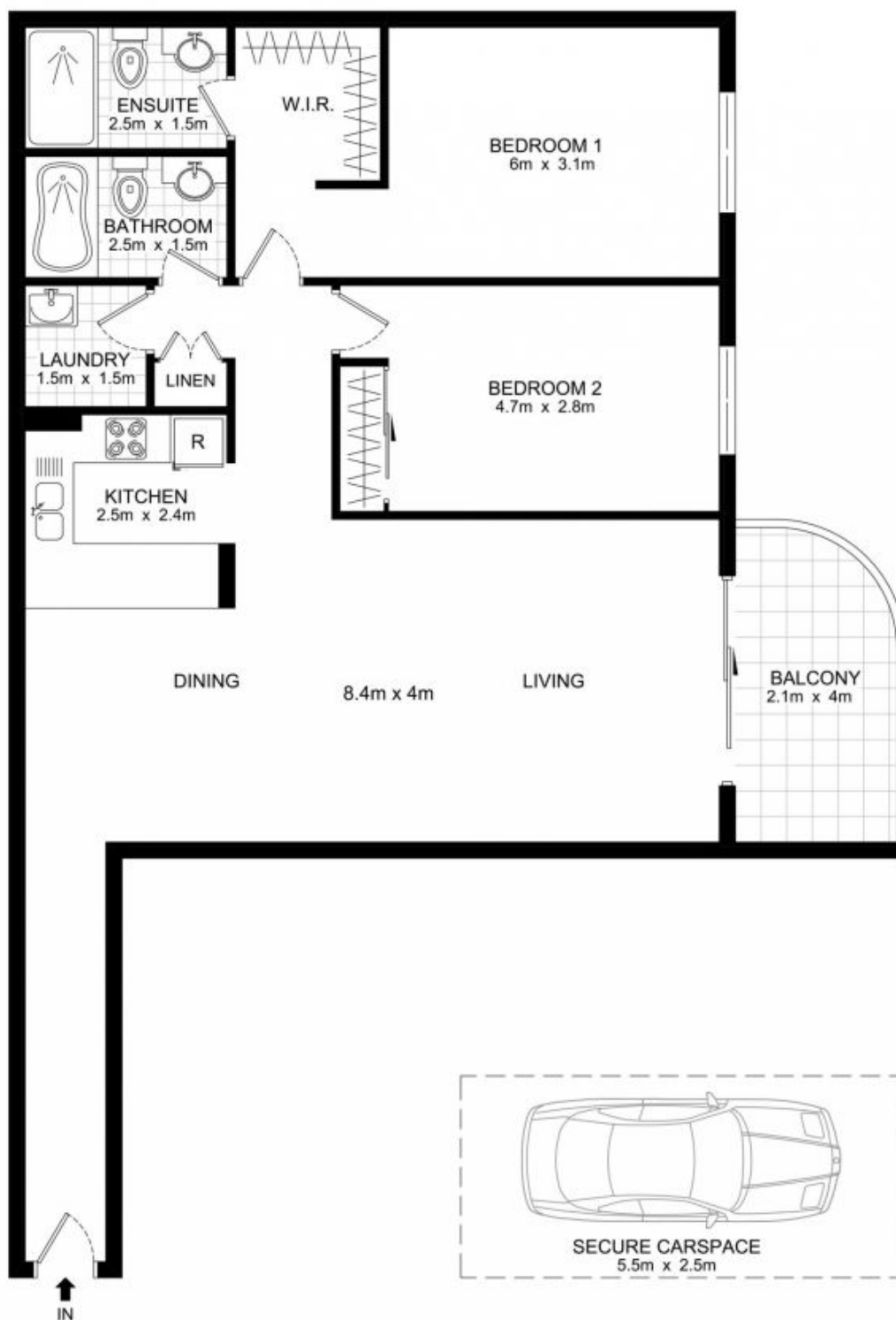
Placed just steps from the hip Erskineville Village, the eat streets of King and Crown Streets and minutes to The

Price : \$ 0

View : <https://www.parkproperties.com.au/sale/nsw/inner-west/erskineville/residential/apartment/2916835>



Melissah McCaffery J P
02 9565 5333



LEVEL 6

BASEMENT

7603/177-219 Mitchell Road, Erskineville

DISCLAIMER: THIS PLAN IS FOR ILLUSTRATIVE PURPOSES ONLY. DIMENSIONS ARE APPROXIMATE AND IT DOES NOT CONSTITUTE PART OF ANY LEGAL DOCUMENTS.

