

**1803/221-229 Sydney Park Road Erskineville NSW**

**2**  **2**  **1** 

Eighteen stories up in the sought-after landmark 'Zenix' tower, this naturally light filled apartment offers oversized living spaces and an abundance of designer aesthetics. Enjoying an in/out-door flow that allows for relaxation or entertaining - this is idyllic inner west living at its optimum.

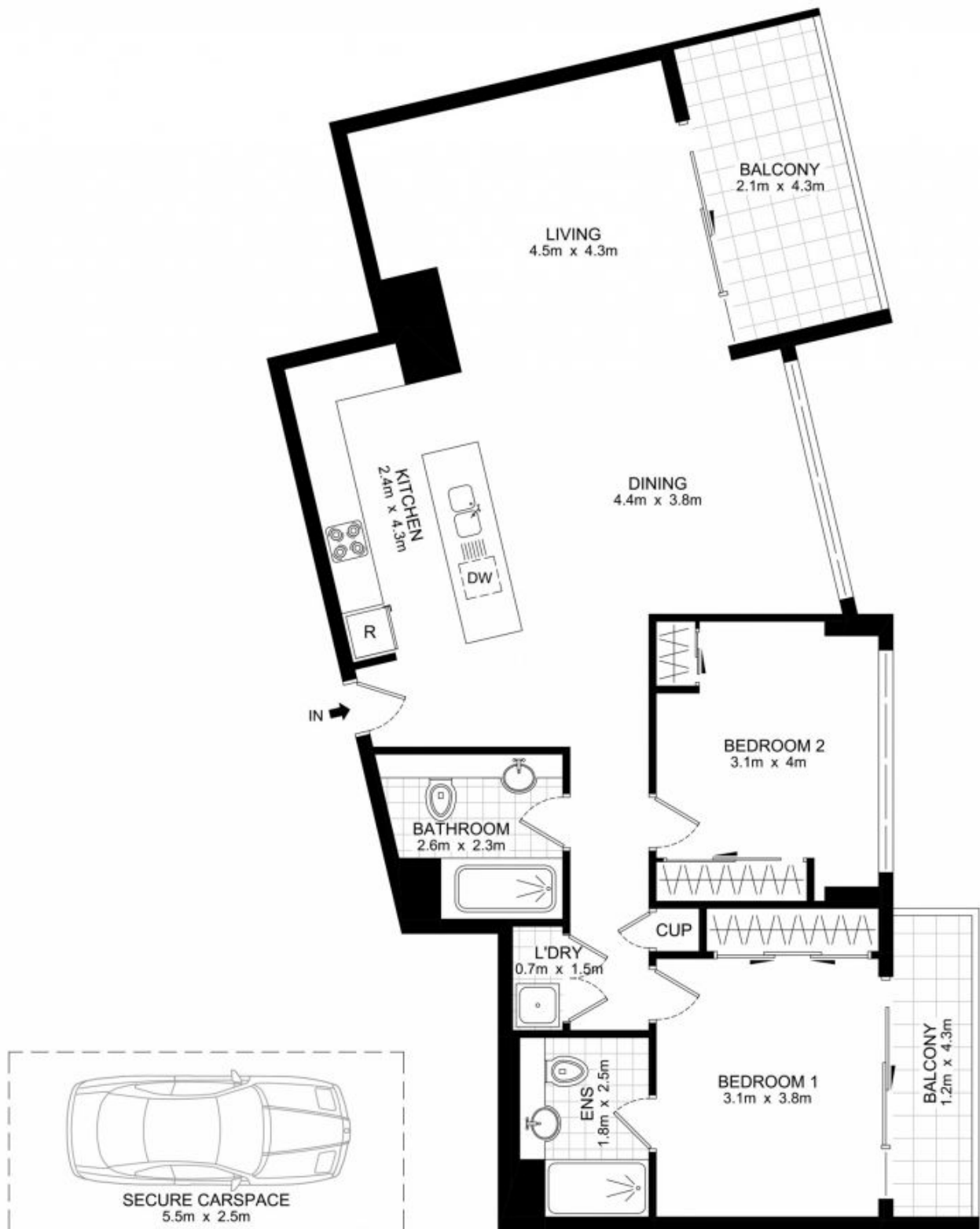
**Price** : \$ 911,500

**View** : <https://www.parkproperties.com.au/sale/nsw/inner-west/erskineville/residential/apartment/2916792>

Expansive open plan living & dining w/ floor to ceiling glass  
Granite kitchen w/ gourmet gas s/s appliances  
Generous bedrooms w/ BIR, master w/ ensuite  
Contemporary bathrooms, main w/ tub & separate concealed laundry  
Two entertaining balconies w/ uninterrupted 180 degree district views  
Tropical gardens w/ resort-style swimming pool, gym, children's playground & tennis court  
Pet-friendly security complex w/ lift access from underground car space



**Melissah McCaffery J P**  
**02 9565 5333**



BASEMENT

TOP FLOOR (18)

**1803/221-229 Sydney Park Road, Erskineville**

DISCLAIMER: THIS PLAN IS FOR ILLUSTRATIVE PURPOSES ONLY. DIMENSIONS ARE APPROXIMATE AND IT DOES NOT CONSTITUTE PART OF ANY LEGAL DOCUMENTS.

