

3205/177-219 Mitchell Road Erskineville NSW

2  2  1 

Enjoy the convenience of this 114 sqm two bedroom apartment with the cosmopolitan lifestyle address that is Sydney Park Village. With refined renovations, this apartment is ideal for home owners or astute investors seeking a resort style feel coupled with high yields and low maintenance living.

Price : \$ 790,000

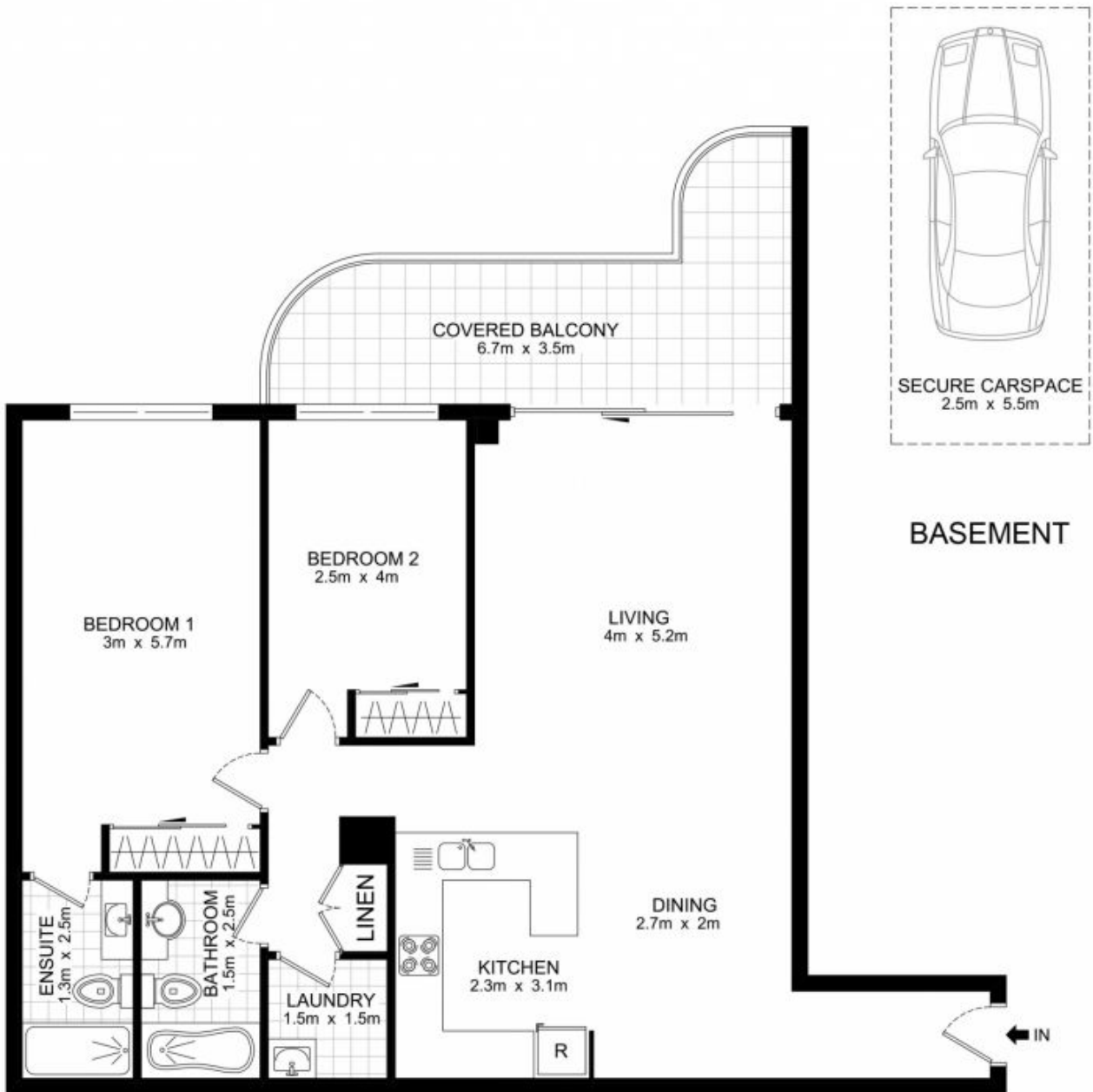
View : <https://www.parkproperties.com.au/sale/nsw/inne-r-west/erskineville/residential/apartment/2698938>

- Open plan lounge & dining
- Well-appointed gas kitchen w/ s/s appliances
- Oversized main bedroom w/ BIR & ensuite bathroom
- Second bedroom w/ BIR
- Full main bathroom w/ tub & separate laundry
- Intercom access
- Secure underground car space



Melissah McCaffery J P
02 9565 5333

Placed just steps from the hip Erskineville Village, the eat streets of King and Crown Streets and minutes to The



BASEMENT

LEVEL 2

3205/177-219 Mitchell Road, Erskineville

DISCLAIMER: THIS PLAN IS FOR ILLUSTRATIVE PURPOSES ONLY. DIMENSIONS ARE APPROXIMATE AND IT DOES NOT CONSTITUTE PART OF ANY LEGAL DOCUMENTS.

