

14207/177-219 Mitchell Road Erskineville NSW

1  1  1 

Designed for laid back urban living this internal, East facing one bedroom plus study apartment features a full length entertainer's balcony with direct views over the tennis courts, pool and manicured gardens.

Price : \$ 690,000

View : <https://www.parkproperties.com.au/sale/nsw/inner-west/erskineville/residential/apartment/2669822>

Open plan lounge & dining area flowing onto the East facing balcony

Spacious bedroom w/ WIR & balcony access

Study area & generous storage throughout

Gourmet gas kitchen w/ s/s appliances

Sleek bathroom w/ tub & internal laundry

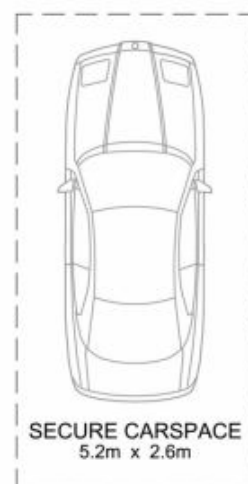
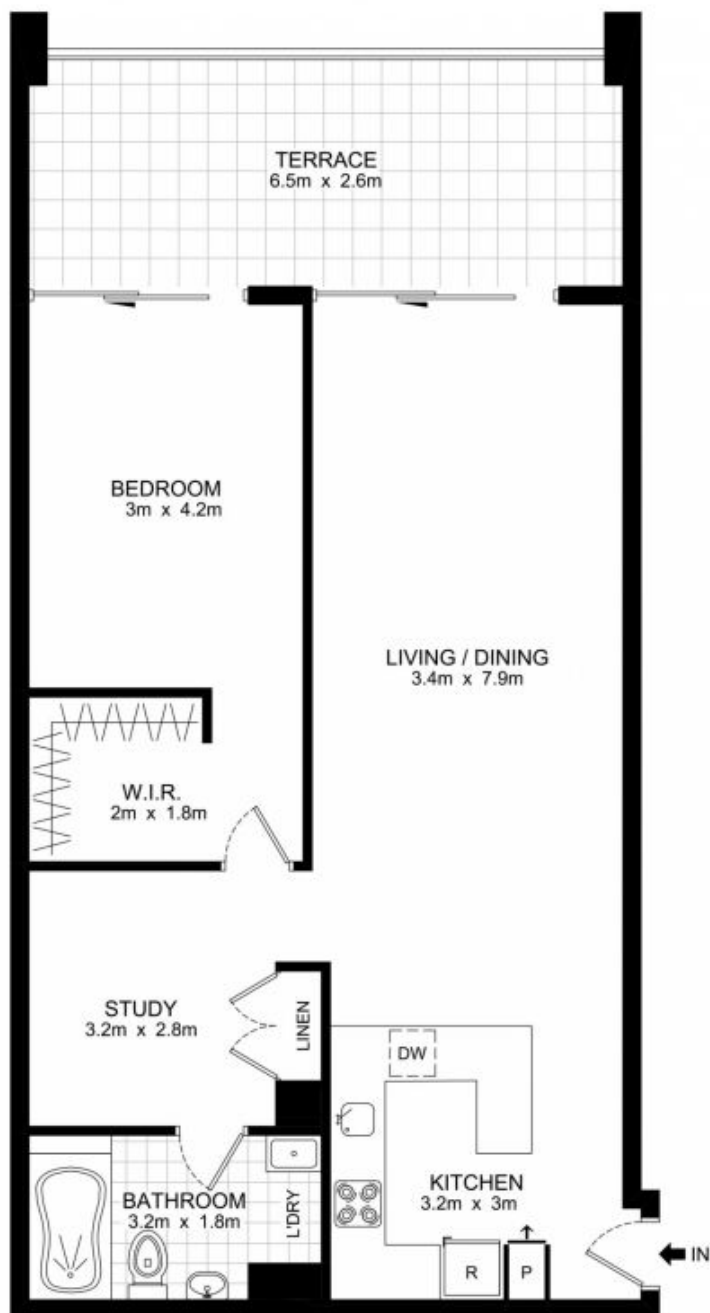
Secure undercover car space

Intercom access



Melissah McCaffery J P
02 9565 5333

Placed just steps from the hip Erskineville Village, the eat streets of King and Crown Streets and minutes to The Grounds, Campos, Rosetta Stone Bakery, Bread & Circus,



BASEMENT

14207/177-219 Mitchell Road, Erskineville

DISCLAIMER: THIS PLAN IS FOR ILLUSTRATIVE PURPOSES ONLY. DIMENSIONS ARE APPROXIMATE AND IT DOES NOT CONSTITUTE PART OF ANY LEGAL DOCUMENTS.

