



17208/177-219 Mitchell Road Erskineville NSW

1  1  1 

Featuring an ideal northerly aspect, this one bedroom plus study apartment w/ secure parking is situated in one of the most sought after resort style complexes in Sydney's inner west.

View : <https://www.parkproperties.com.au/sale/nsw/inner-west/erskineville/residential/apartment/2575943>

Open plan lounge & dining area flowing onto the north facing balcony

Gas kitchen w/ s/s appliances

Spacious bedroom w/ BIW

Sleek bathroom w/ tub & internal laundry

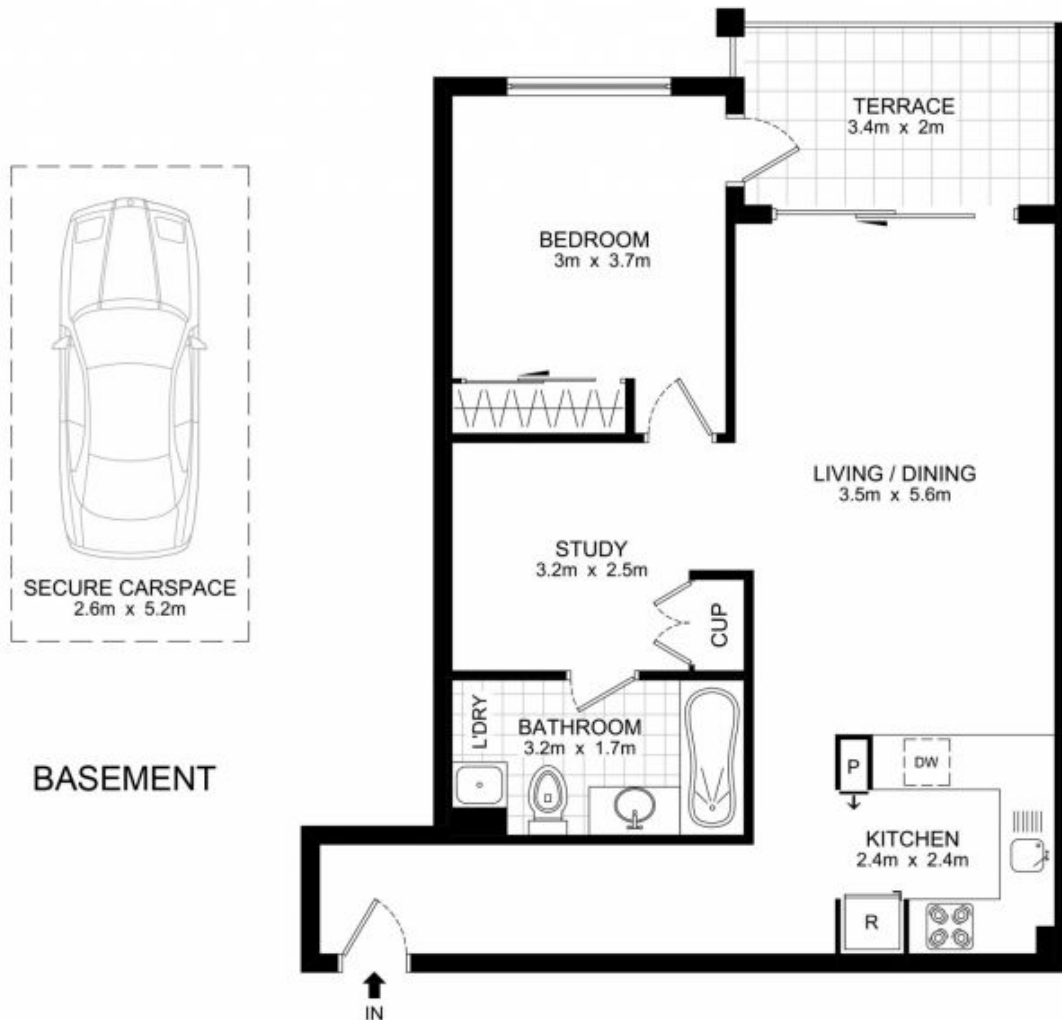
Secure car space

Intercom access



Melissah McCaffery J P
02 9565 5333

Placed just steps from the hip Erskineville Village, the eat streets of King and Crown Streets and minutes to The Grounds, Foodcraft Espresso & Bakery, Campos, Rosetta Stone Bakery, Bread & Circus, and Fratelli Fresh, Sydney



BASEMENT

LEVEL 2

17208/177-219 Mitchell Road, Erskineville

DISCLAIMER: THIS PLAN IS FOR ILLUSTRATIVE PURPOSES ONLY. DIMENSIONS ARE APPROXIMATE AND IT DOES NOT CONSTITUTE PART OF ANY LEGAL DOCUMENTS.

