



**12204/177-219 Mitchell Road Erskineville NSW**

1  1  1 

Ideal opportunity for the astute investor. This open plan one bedroom plus study apartment offers a great oversized courtyard and low maintenance living with a great rental return.

**Price** : \$ 645,000

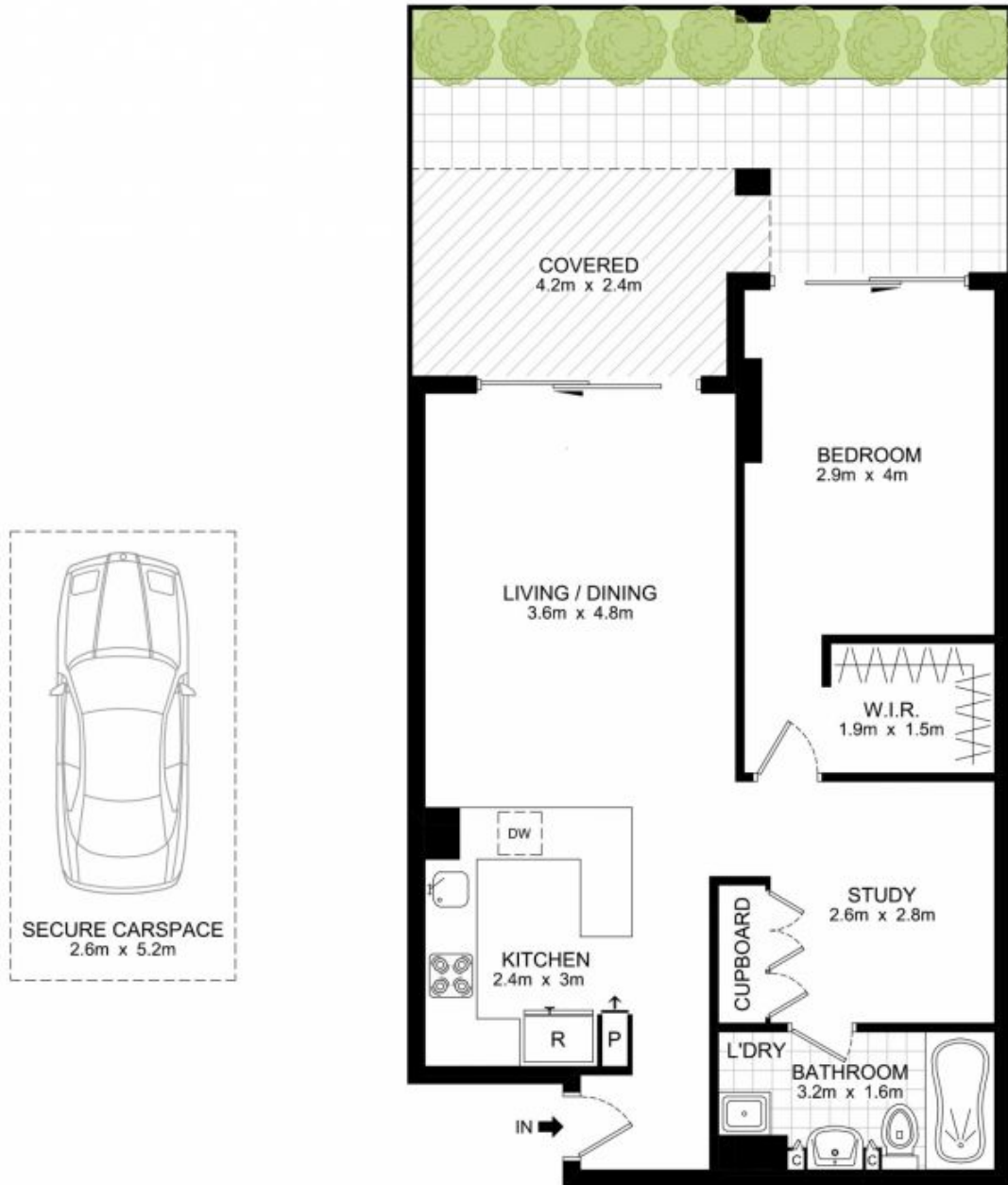
**View** : <https://www.parkproperties.com.au/sale/nsw/inner-west/erskineville/residential/apartment/2568713>

Bright open plan lounge & dining area  
Gourmet gas kitchen with stainless steel appliances  
Air conditioning in lounge and bedroom  
Bedroom with direct courtyard access and walk in robe  
Study perfect for home office  
Stylish bathroom with tub & laundry  
Secure car space  
Intercom access  
Rental return of \$590/week



**Melissah McCaffery J P**  
**02 9565 5333**

Placed just steps from the hip Erskineville Village, the eat streets of King and Crown Streets and minutes to The



BASEMENT

LEVEL 2

12204/177-219 Mitchell Road, Erskineville

DISCLAIMER: THIS PLAN IS FOR ILLUSTRATIVE PURPOSES ONLY. DIMENSIONS ARE APPROXIMATE AND IT DOES NOT CONSTITUTE PART OF ANY LEGAL DOCUMENTS.

