

**12302/177-219 Mitchell Road Erskineville NSW**

**2**  **2**  **1** 

Arguably one of the best floor plans in Sydney Park Village, this two bedroom apartment features a versatile layout w/ separate bedrooms and bathrooms, modest levies and is amid the buzzing cafes, dining, boutiques & galleries of Erko and surrounding suburbs.

Open plan lounge/dining flowing onto the over sized, leafy balcony

Modern gas kitchen w/ stainless steel appliances and stone bench tops

Spacious main bedroom w/ walk-in wardrobe and full ensuite

Second bedroom w/ built-in wardrobe

Large and versatile entry w/ study area

Main bathroom w/ bathtub and laundry

Security car space on title

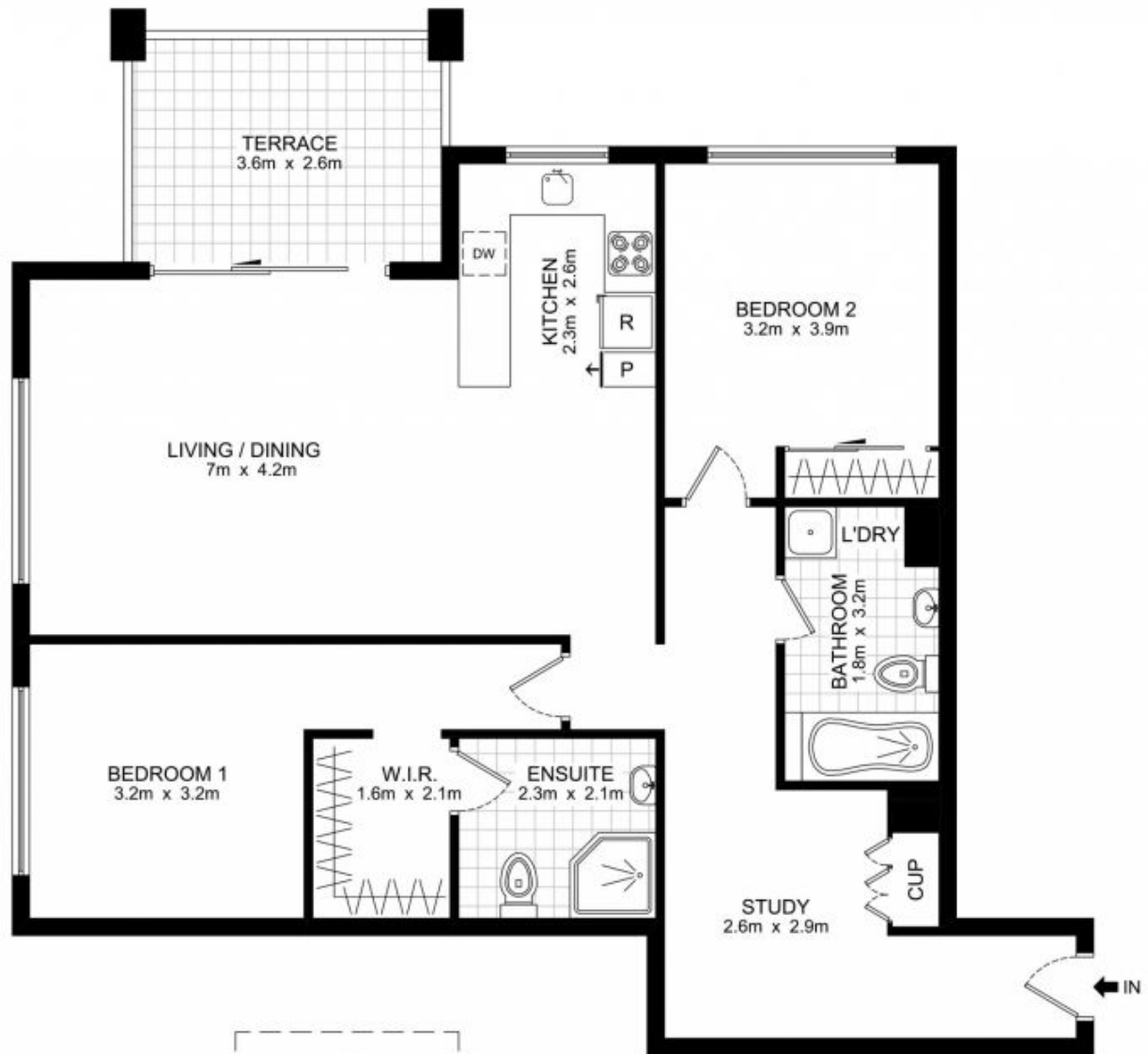
Intercom access

**Price** : \$ 780,000

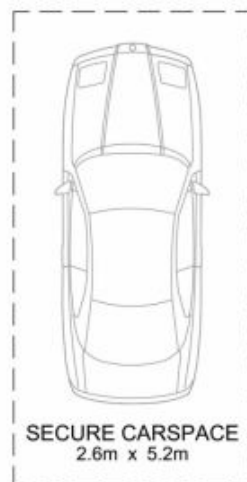
**View** : <https://www.parkproperties.com.au/sale/nsw/inner-west/erskineville/residential/apartment/2555680>



**Melissah McCaffery J P**  
**02 9565 5333**



**LEVEL 3**



**BASEMENT**

**12302/177-219 Mitchell Road, Erskineville**

DISCLAIMER: THIS PLAN IS FOR ILLUSTRATIVE PURPOSES ONLY. DIMENSIONS ARE APPROXIMATE AND IT DOES NOT CONSTITUTE PART OF ANY LEGAL DOCUMENTS.

