



16501/177-219 Mitchell Road Erskineville NSW

1  1  1 

Located in the latest building of Sydney Park Village high above the pool and tropical gardens on the 5th floor, this hard to find, unique layout ticks all the boxes.

Private, open-plan living/dining with a/c
Indoor/outdoor living spaces
Gas kitchen with stainless steel appliances
Full width balcony ideal for summer entertaining
Main bedroom with built in robe
Bathroom with tub and laundry
Security car space
Leased until July 2016

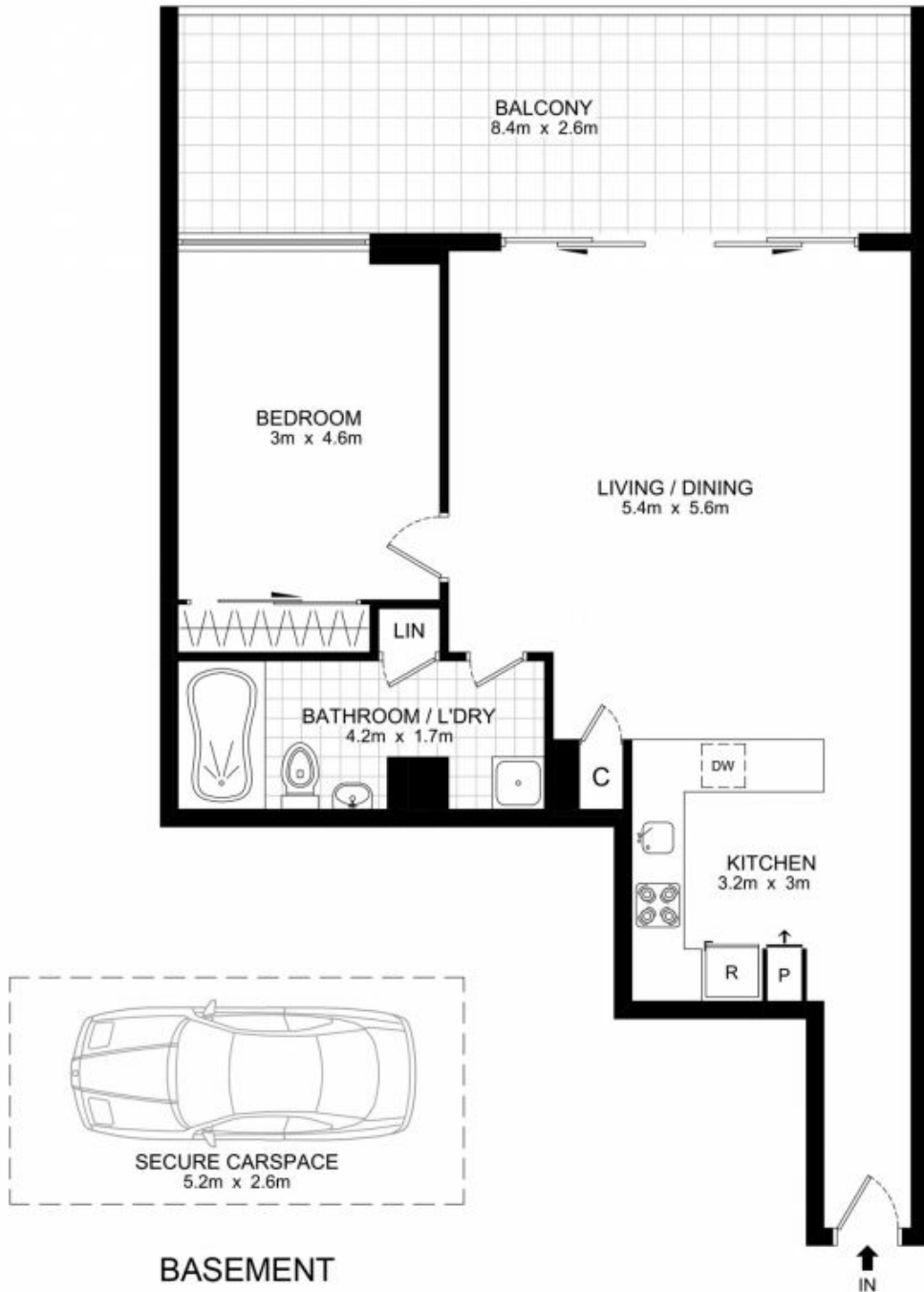
Placed just steps from the hip Erskineville Village, the eat streets of King and Crown Streets and minutes to The Grounds, Campos, Rosetta Stone Bakery, Bread & Circus, and Fratelli Fresh, Sydney Park Village is one of the most

Price : \$ 670,000

View : <https://www.parkproperties.com.au/sale/nsw/inner-west/erskineville/residential/apartment/2454747>



Melissah McCaffery J P
02 9565 5333



LEVEL 5

16501/177-219 Mitchell Road, Erskineville

DISCLAIMER: THIS PLAN IS FOR ILLUSTRATIVE PURPOSES ONLY. DIMENSIONS ARE APPROXIMATE AND IT DOES NOT CONSTITUTE PART OF ANY LEGAL DOCUMENTS.

