

1405/177-219 Mitchell Road Erskineville NSW

1  1  1 

Easy low maintenance living in the heart of Erskineville. This apartment is located in one of the inner west's most sought after complexes.

Open plan living and dining with air-conditioning
Modern kitchen with dishwasher
Bedroom featuring built in wardrobe
Full bathroom with bathtub and laundry facilities
Leafy outlook from the generous balcony
Secure car space
Leased until July 2016

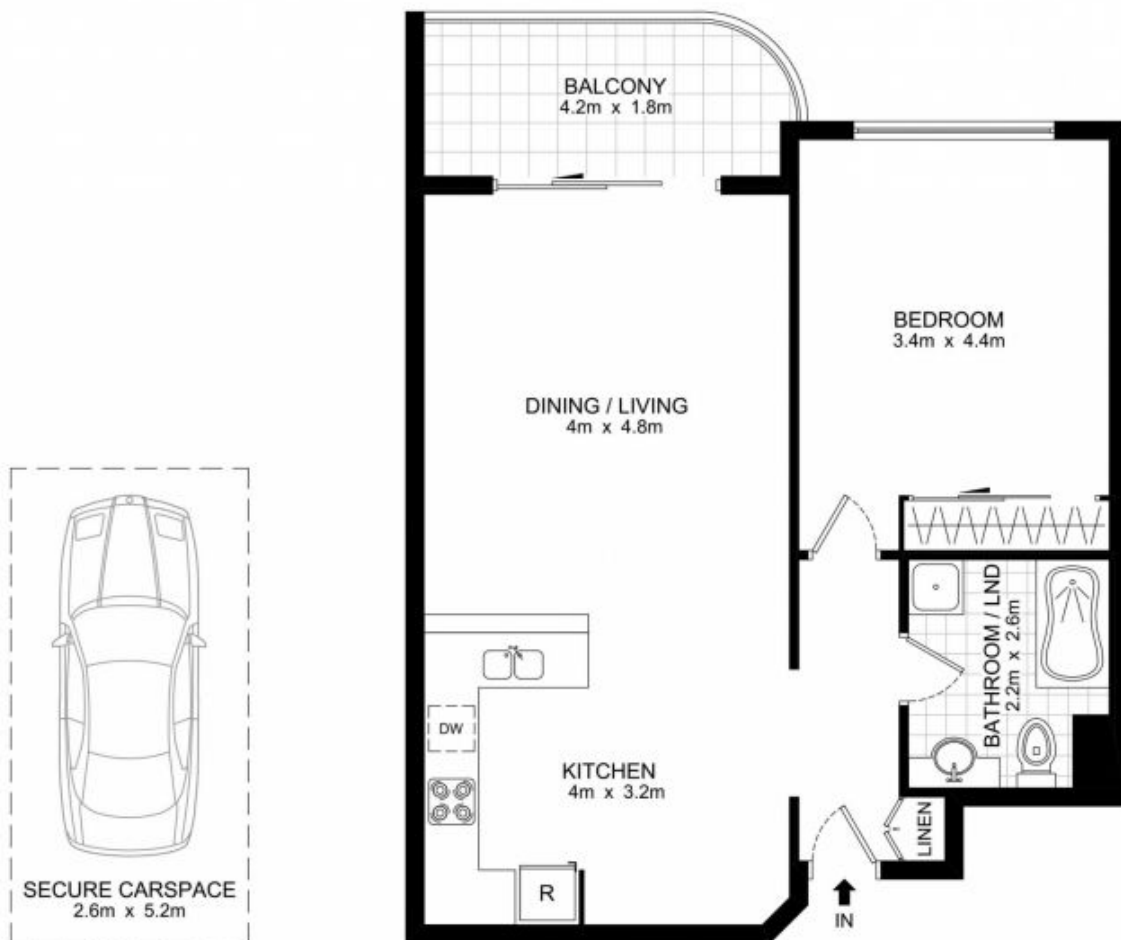
Placed just steps from the hip Erskineville Village, the eat streets of King and Crown Streets and minutes to The Grounds, Campos, Rosetta Stone Bakery, Bread & Circus, and Fratelli Fresh, Sydney Park Village is one of the most sought after resort style buildings in inner Sydney.

Price : \$ 580,000

View : <https://www.parkproperties.com.au/sale/nsw/inner-west/erskineville/residential/apartment/2420599>



Melissah McCaffery J P
02 9565 5333



LEVEL 4

1405/177-219 Mitchell Road, Erskineville

DISCLAIMER: THIS PLAN IS FOR ILLUSTRATIVE PURPOSES ONLY. DIMENSIONS ARE APPROXIMATE AND IT DOES NOT CONSTITUTE PART OF ANY LEGAL DOCUMENTS.

