



16611/177-219 Mitchell Road Erskineville NSW

1  1  1 

This one bedroom + study apartment offers a desirable, open plan layout with a generous sized balcony, perfect for entertaining!

Modern gas kitchen with stainless steel appliances
Spacious open plan lounge and dining with air conditioning
Bedroom with walk in robe and balcony access
Separate study, perfect for home office or nursery
Full bathroom with laundry facilities
Good sized entertainers' balcony
Secure undercover car space
Intercom access

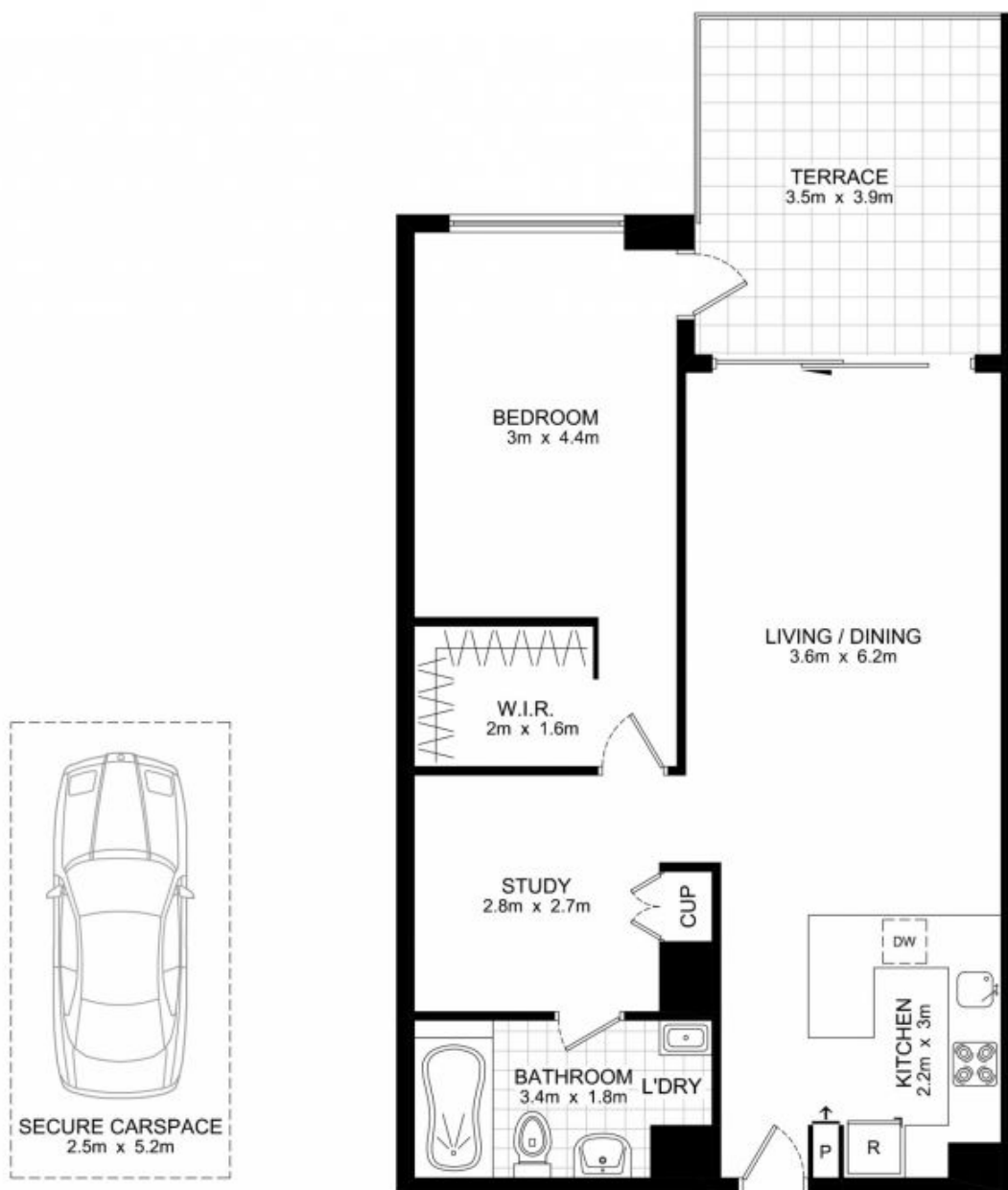
Placed just steps from the hip Erskineville Village, the eat streets of King and Crown Streets and minutes to The Grounds, Campos, Rosetta Stone Bakery, Bread & Circus, and Fratelli Fresh, Sydney Park Village is one of the most

Price : \$ 720,000

View : <https://www.parkproperties.com.au/sale/nsw/inner-west/erskineville/residential/apartment/2357100>



Melissah McCaffery J P
02 9565 5333



BASEMENT

TOP FLOOR, LEVEL 6

16611/177-219 Mitchell Road, Erskineville

DISCLAIMER: THIS PLAN IS FOR ILLUSTRATIVE PURPOSES ONLY. DIMENSIONS ARE APPROXIMATE AND IT DOES NOT CONSTITUTE PART OF ANY LEGAL DOCUMENTS.

