



16108/177-219 Mitchell Road Erskineville NSW

1  1  1 

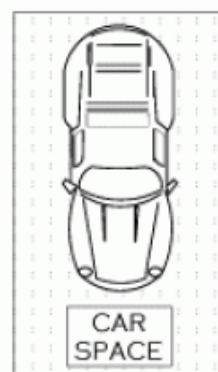
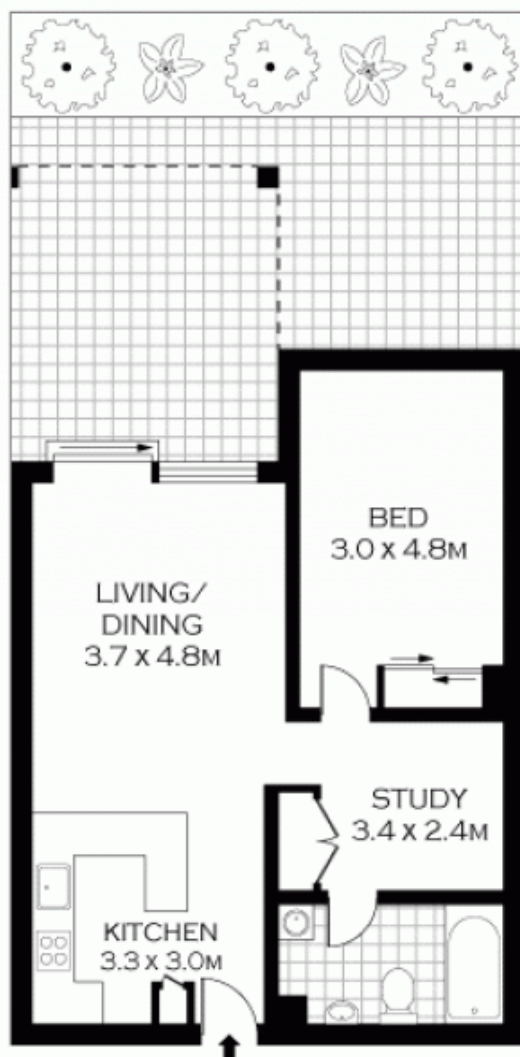
This idyllic courtyard apartment should appeal to first home buyers, and equally presents an attractive investment opportunity. Set within Sydney Park Village this apartment offers easy, low maintenance living with a cosmopolitan lifestyle address.

North facing garden apartment in the newest stage of the complex
Spacious living area flowing out onto the outdoor entertaining courtyard
Double bedroom with built-in robe
Versatile study room
Modern bathroom with bath and internal laundry
Security intercom entry, level lift access
Secure car space on title
Close to amenities and transport

Price : \$ 716,000
Land Size : 108 sqm
View : <https://www.parkproperties.com.au/sale/nsw/inner-west/erskineville/residential/apartmen/2285507>



Melissah McCaffery J P
02 9565 5333



NOTE :- ONE SECURE CAR SPACE



PLANS SHOWN ONLY INDICATIVE OF LAYOUT. DIMENSIONS ARE APPROXIMATE.
Floor plans by www.realestatemarketingaustralia.com.au
Ref. No: 6103

PARK
PROPERTIES

ERSKINEVILLE 9565 5333

16108/177-219 MITCHELL ROAD

ERSKINEVILLE