



14202/177-219 Mitchell Road Erskineville NSW

2  **2**  **1** 

Filled with natural light, this generously proportioned apartment will not last long.

The large balcony is perfect for entertaining with internal views of the complex resort facilities and access from both bedrooms and living room. Both bedrooms are generously sized with walk in robe and ensuite to main.

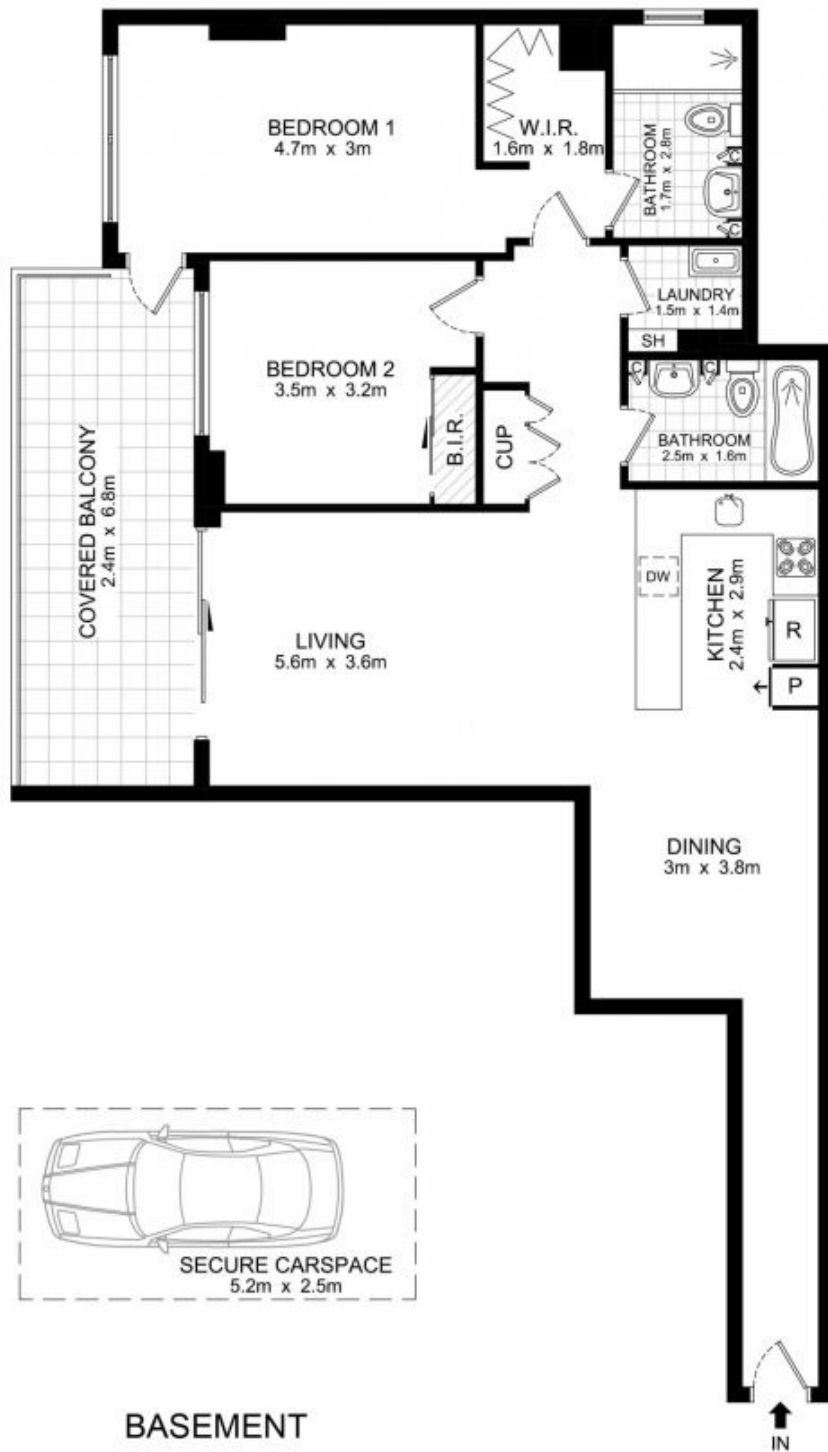
Open plan living with defined lounge and dining areas
2 bedrooms - built in robe to second, main with walk in, ensuite and access to the balcony
2 modern bathrooms
Modern gas kitchen with stainless steel appliances and dishwasher
Intercom access
Secure car space on title

Price : \$ 911,000

View : <https://www.parkproperties.com.au/sale/nsw/inner-west/erskineville/residential/apartment/2284478>



Melissah McCaffery J P
02 9565 5333



BASEMENT

SECOND FLOOR

14202/177-219 Mitchell Road, Alexandria

DISCLAIMER: THIS PLAN IS FOR ILLUSTRATIVE PURPOSES ONLY. DIMENSIONS ARE APPROXIMATE AND IT DOES NOT CONSTITUTE PART OF ANY LEGAL DOCUMENTS.

