



15101/177-219 Mitchell Road Erskineville NSW

1  1  1 

Encompassing 103sqm this one bedroom courtyard apartment is generous in size and features! Offering open plan living leading out to a private entertainer's courtyard this apartment is ideal for those seeking space & lifestyle in an urban locale.

Large master bedroom with built in robe robe & courtyard access

Fully tiled bathroom with tub & laundry facilities

Modern gas kitchen with stainless steel appliances and dishwasher

Video intercom entry & secure car space on title

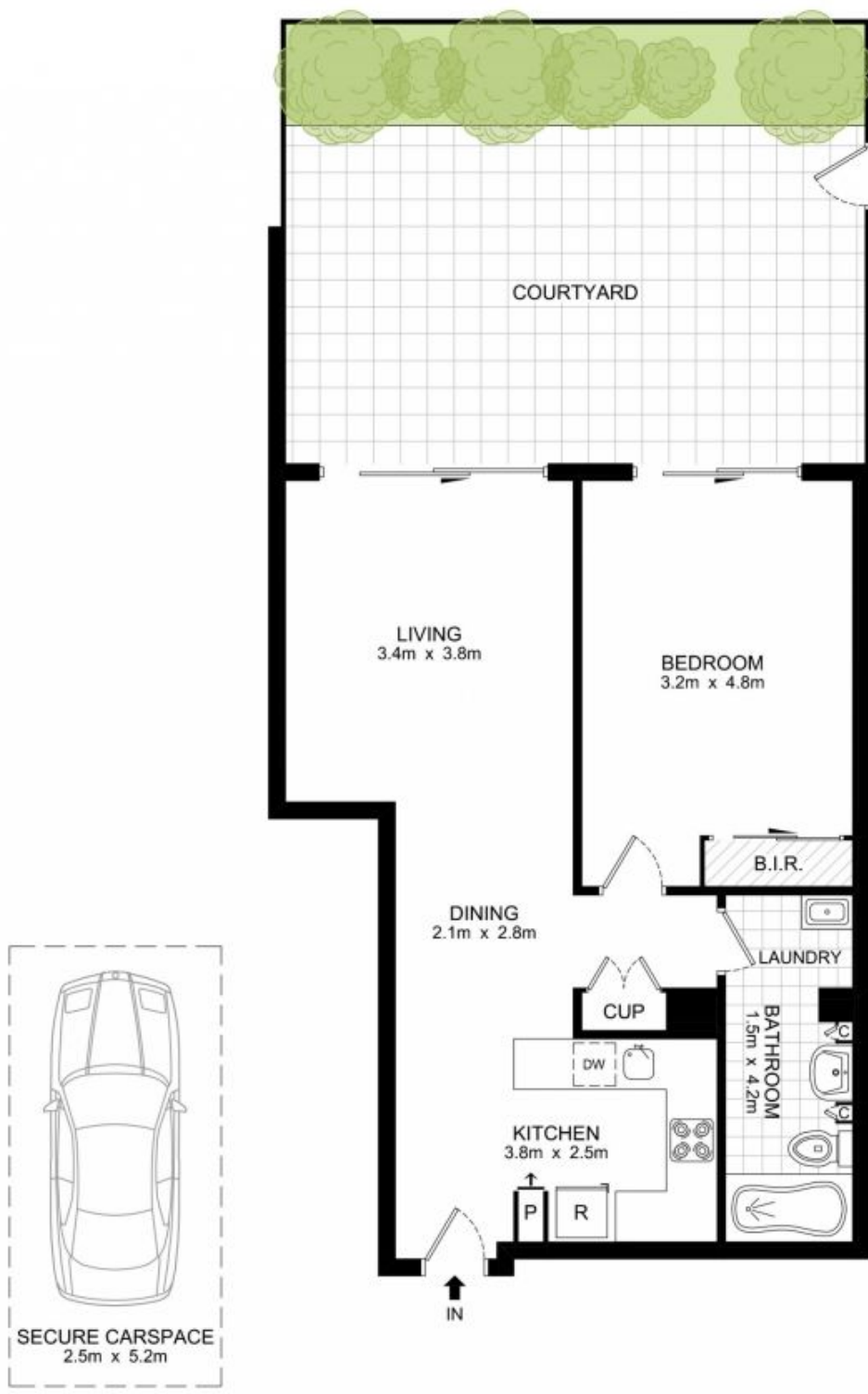
Placed just steps from the hip Erskineville Village, the urban oasis of Sydney Park, and the eat streets of King and Crown Streets Sydney Park Village is one of the most sought after resort style buildings in inner Sydney. With

Price : \$ 650,000

View : <https://www.parkproperties.com.au/sale/nsw/inner-west/erskineville/residential/apartment/2283652>



Melissah McCaffery J P
02 9565 5333



BASEMENT

GROUND FLOOR

15101/177-219 Mitchell Road, Alexandria

DISCLAIMER: THIS PLAN IS FOR ILLUSTRATIVE PURPOSES ONLY. DIMENSIONS ARE APPROXIMATE AND IT DOES NOT CONSTITUTE PART OF ANY LEGAL DOCUMENTS.

