



**14408/177-219 Mitchell Road Erskineville NSW**

1  1  1 

Offering an outstanding Inner West address, this apartment boasts light filled, oversized living. A great buying opportunity for those seeking space, convenience & low maintenance living with amenities, nightlife, cafes and transport close by.

**Price** : \$ 700,000

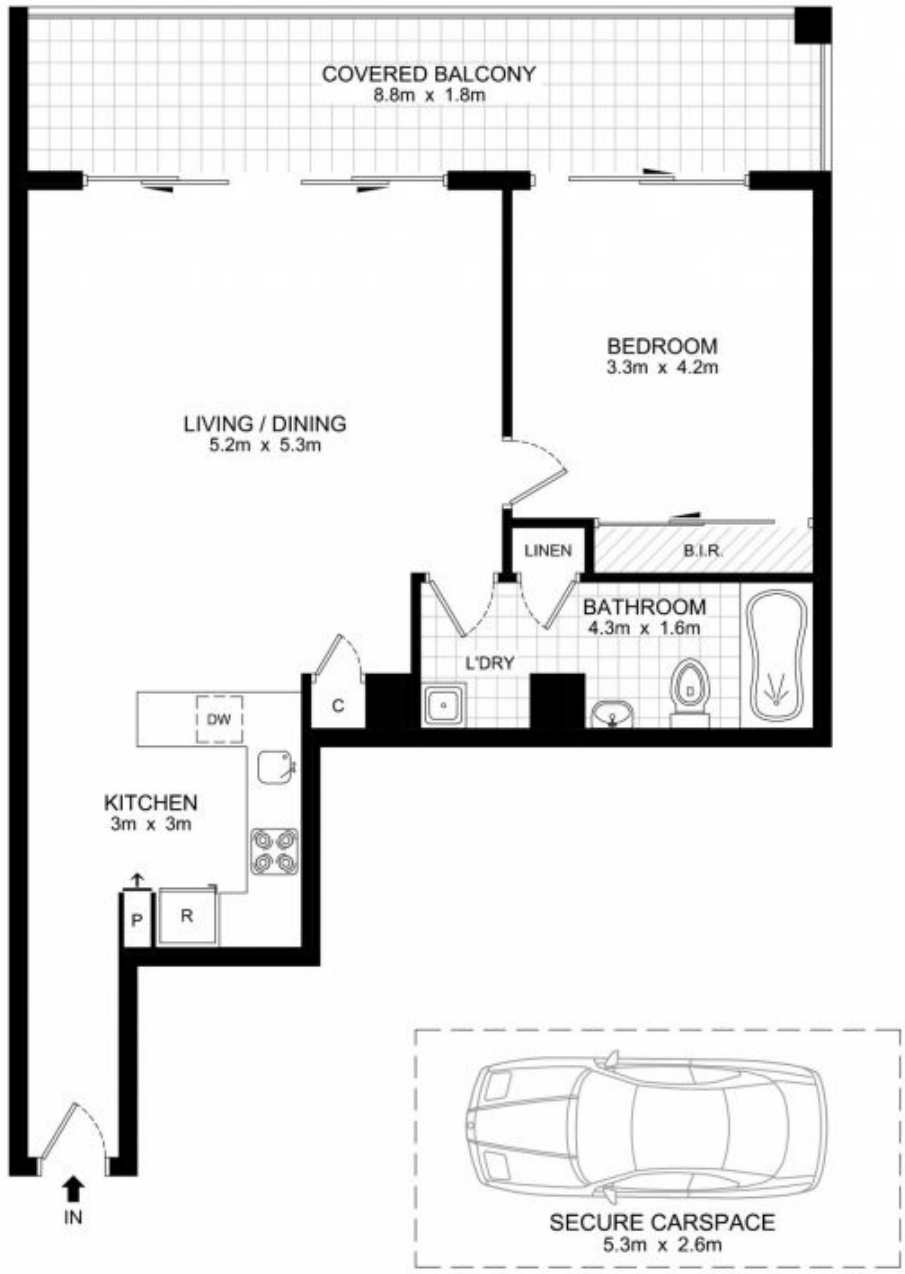
**View** : <https://www.parkproperties.com.au/sale/nsw/inner-west/erskineville/residential/apartment/2225713>

Double bedroom with built in robe & balcony access  
 Generous open plan living with garden views  
 Modern bathroom with tub & laundry facilities  
 Fully equipped gas kitchen with dishwasher  
 Full length entertainers balcony  
 Intercom access & undercover parking on title  
 Ideal for owner occupiers and investors



**Melissah McCaffery J P**  
**02 9565 5333**

Placed just steps from the hip Erskineville Village & the eat streets of King and Crown Streets, Sydney Park Village is one of the most sought after resort style buildings in inner



LEVEL 4

BASEMENT

**14408/177-219 Mitchell Road, Erskineville**

DISCLAIMER: THIS PLAN IS FOR ILLUSTRATIVE PURPOSES ONLY. DIMENSIONS ARE APPROXIMATE AND IT DOES NOT CONSTITUTE PART OF ANY LEGAL DOCUMENTS.

