



11 Proctor Avenue Kingsgrove NSW

4  2  2 

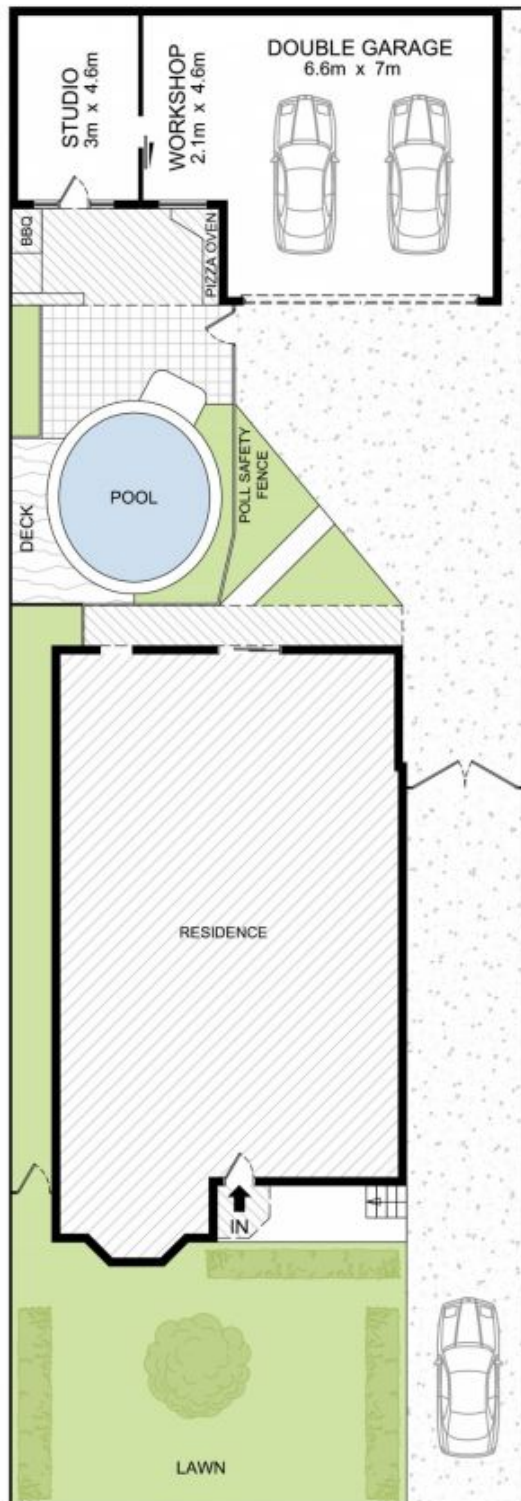
Boasting generous interiors span over two levels this free-standing residence offers warmth & family values. Occupying over 500sqm, this home offers comfortable living as is with many updates throughout, yet has potential to further redesign and add more value.

Price : \$ 1,330,000
Land Size : 506 sqm
View : <https://www.parkproperties.com.au/sale/nsw/st-george/kingsgrove/residential/house/2151625>

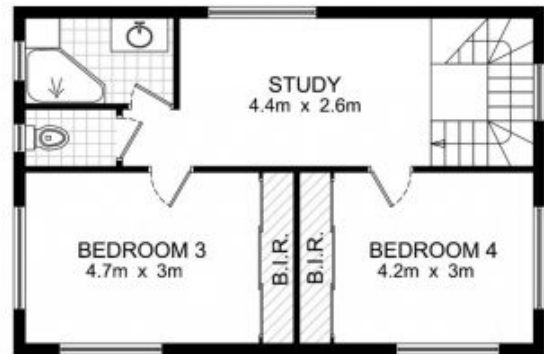
Four double bedrooms, built in robes to 3
 Downstairs living offering formal lounge & dining rooms
 Caesar stone gas kitchen with stainless steel appliances
 Family room & casual dining off kitchen with direct access to garden
 Casual living upstairs & 2nd bathroom with spa
 Polished floorboards throughout, gas heating options & air conditioning
 Oversized double lock up garage with studio
 Private sunny yard with alfresco deck & pool



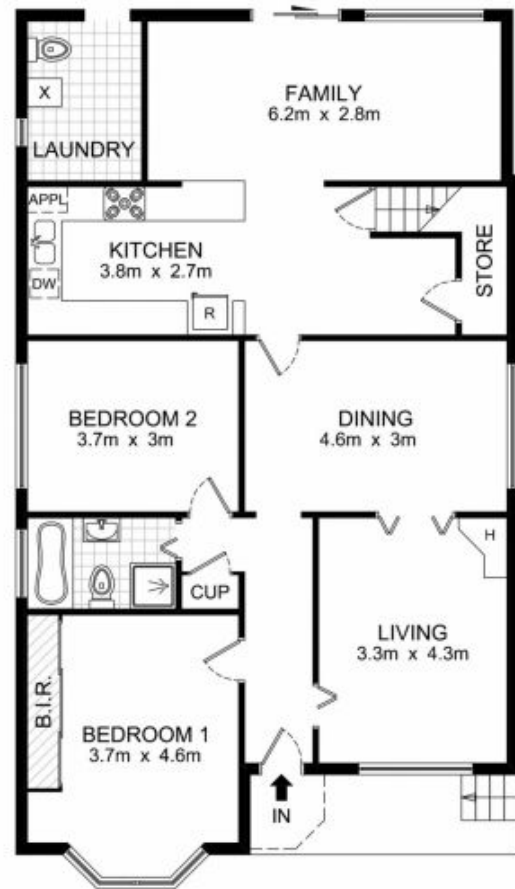
Melissah McCaffery J P
 02 9565 5333



SITE PLAN



FIRST FLOOR



GROUND FLOOR

11 Proctor Avenue, Kingsgrove

DISCLAIMER: THIS PLAN IS FOR ILLUSTRATIVE PURPOSES ONLY. DIMENSIONS ARE APPROXIMATE AND IT DOES NOT CONSTITUTE PART OF ANY LEGAL DOCUMENTS.



0 1m 2m 3m

0 1m 2m 3m