

422/50-58 Macleay Street Potts Point NSW

1  1  1 

High above the buzz below, this apartment captures the essence of urban living, yet offers privacy & tree top vista from the 4th floor. Located within the highly regarded "Rex" this one bedroom + study apartment is the perfect first home or ideal investment property.

- * Full length balcony overlooking vibrant Macleay Street
- * Master bedroom with built in robes & balcony access
- * Sleek granite kitchen with integrated dishdraw & fridge
- * Modern mosaic bathroom with concealed laundry facilities
- * Indoor heated pool, gym & sauna facilities
- * Security pet friendly building with Concierge
- * Ducted air conditioning & separate study
- * Secure undercover parking

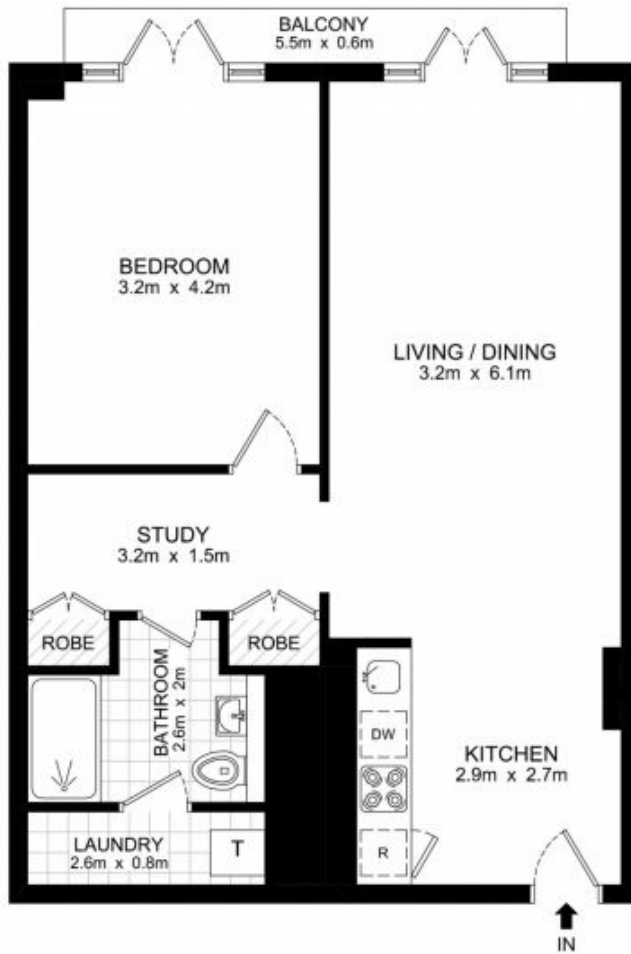
Price : \$ 800,000

View : <https://www.parkproperties.com.au/sale/nsw/east-ern-suburbs/potts-point/residential/apartment/2125662>

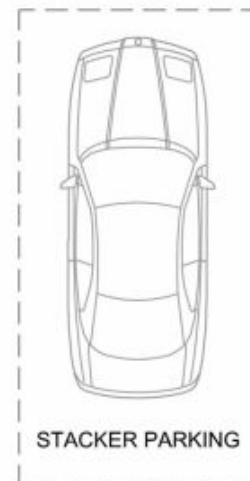


Melissah McCaffery J P
02 9565 5333

Located within "The Rex" a BKH designed landmark



LEVEL 4



BASEMENT

422/50 Macleay Street, Potts Point

DISCLAIMER: THIS PLAN IS FOR ILLUSTRATIVE PURPOSES ONLY. DIMENSIONS ARE APPROXIMATE AND IT DOES NOT CONSTITUTE PART OF ANY LEGAL DOCUMENTS.

