



**84/362 Mitchell Road Alexandria NSW**

2  2  1 

Located within the tightly held Huntley Green complex, this 4th floor apartment offers private living with views across Sydney Park. This apartment is ideal for first home buyers and investors looking for a low maintenance living within moments to the city and the conveniences of Alexandria and Erskineville.

Open plan living leading out to balcony with views over Sydney Park  
Updated kitchen with dishwasher, ample storage and bench space  
Two generous sized bedrooms both with built in wardrobes and main with ensuite  
Internal laundry with clothes dryer  
Secure undercover parking space on title

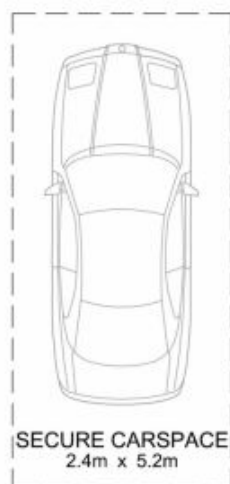
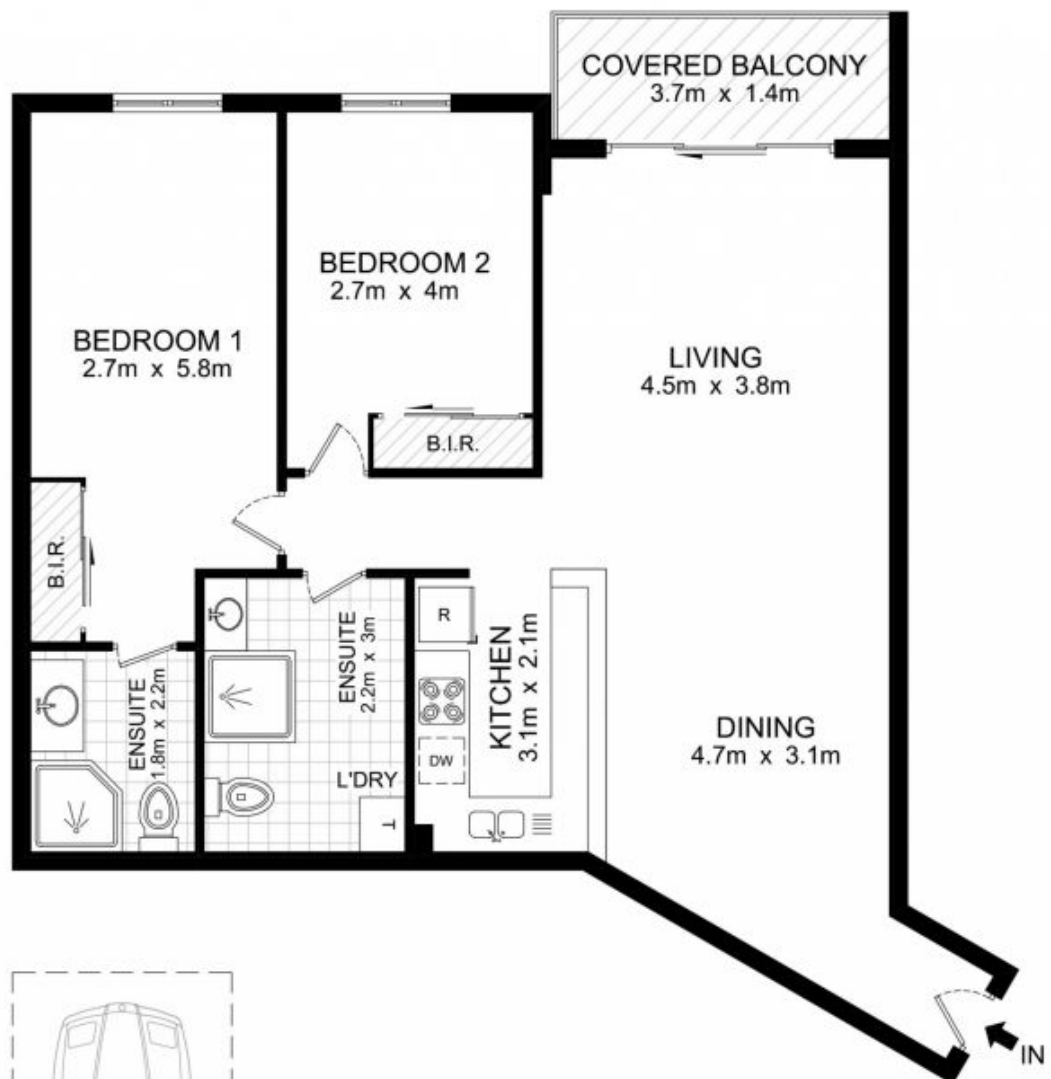
Placed just steps away from trendy caf  s, restaurants

**Price** : \$ 710,000

**View** : <https://www.parkproperties.com.au/sale/nsw/east-ern-suburbs/alexandria/residential/apartment/2053512>



**Melissah McCaffery J P**  
**02 9565 5333**



LEVEL 4

BASEMENT

84/362 Mitchell Road, Alexandria

DISCLAIMER: THIS PLAN IS FOR ILLUSTRATIVE PURPOSES ONLY. DIMENSIONS ARE APPROXIMATE AND IT DOES NOT CONSTITUTE PART OF ANY LEGAL DOCUMENTS.

