



17303/177-219 Mitchell Road Erskineville NSW

2  **2**  **1** 

Filled with natural light, this corner apartment will not last long.

The large balcony is perfect for entertaining with internal views of the complex resort facilities and two points of access from the living area and main bedroom. Both bedrooms are generously sized with walk in robe and ensuite to main.

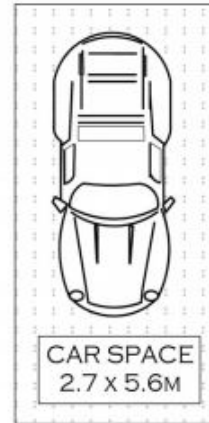
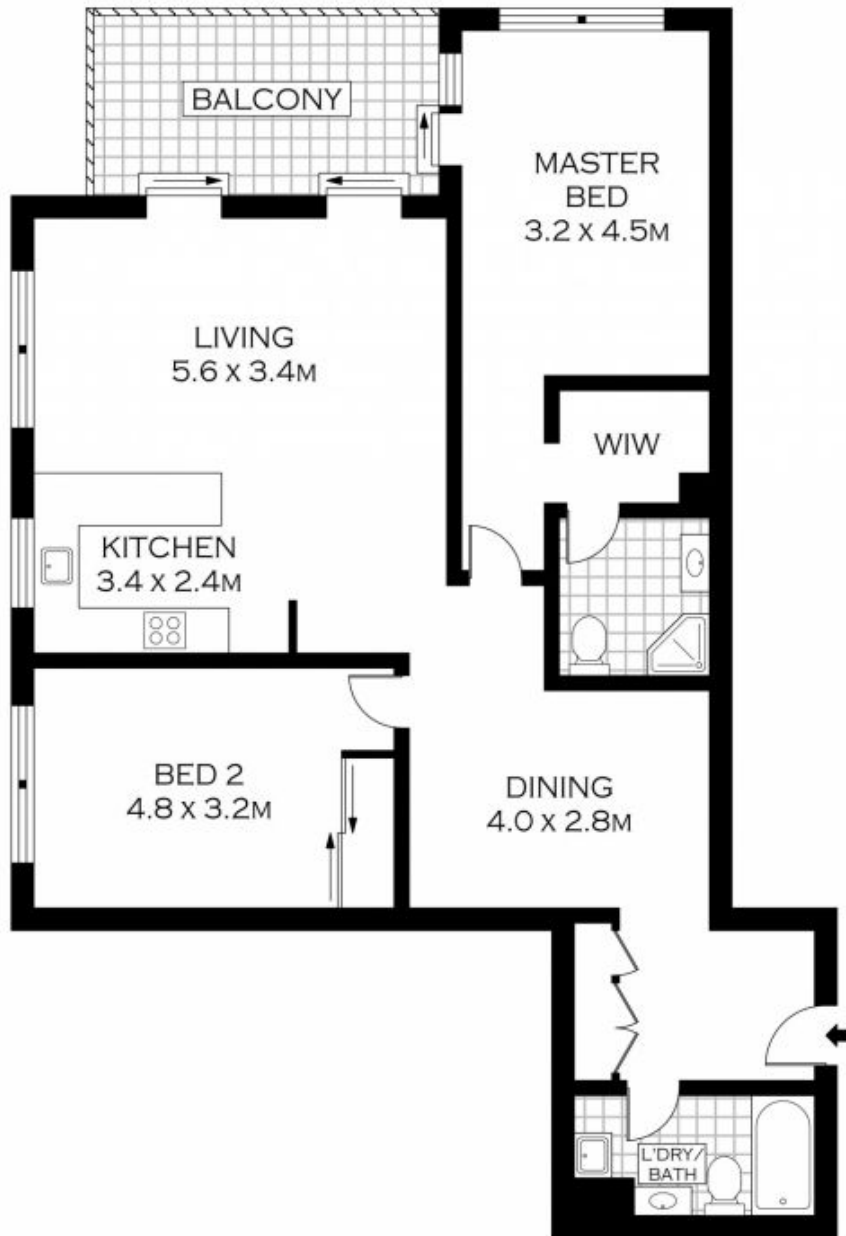
2 bedrooms - built in robe to second, main with walk in, ensuite and access to the balcony
2 modern bathrooms
Modern granite kitchen with stainless steel appliances, gas cooking and dishwasher
Intercom access
Secure car space on title

Price : \$ 780,000

View : <https://www.parkproperties.com.au/sale/nsw/inner-west/erskineville/residential/apartment/2034973>



Melissah McCaffery J P
02 9565 5333



PLANS SHOWN ONLY INDICATIVE OF LAYOUT. DIMENSIONS ARE APPROXIMATE.
Floor plans by www.realestatemarketingaustralia.com.au
Ref. No. 7273



parkproperties
(Aust) Pty Ltd