

**146/362 Mitchell Road Alexandria NSW**

2  2  1 

Located within the tightly held Huntley Green complex, this garden residence offers urban, yet private living amongst its resort style surrounds. Located in the north wing of the development, this apartment is ideal for first home buyers and investors looking for a low maintenance living within moments to the city and the conveniences of Alexandria and Erskineville.

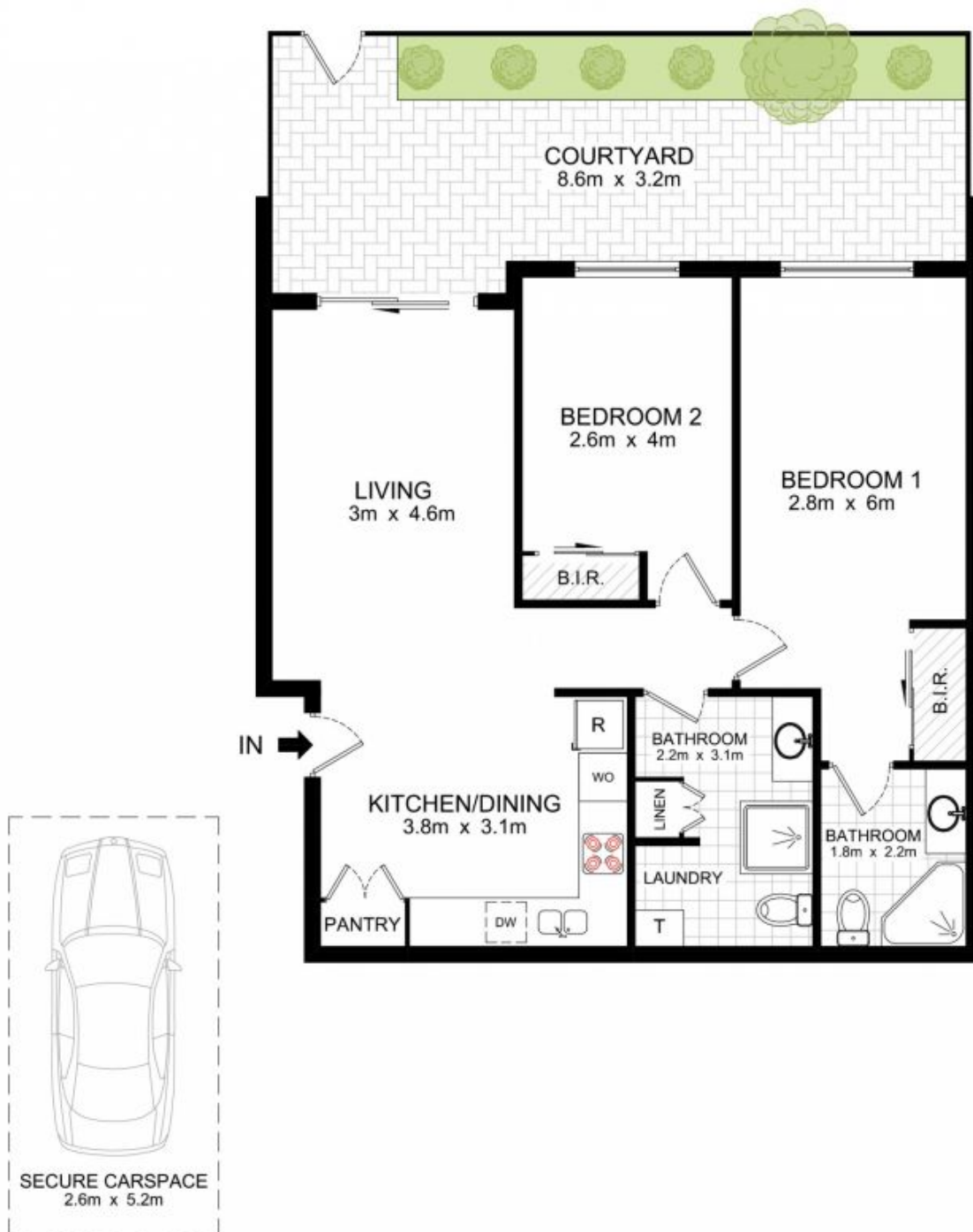
Private access  
Open plan living with floating timber floorboards, private internal facing courtyard  
New gourmet kitchen with dishwasher, ample storage and bench space  
Two generous sized bedrooms both with built in wardrobes and main with ensuite  
Internal laundry  
Secure undercover parking space on title

**Price** : \$ 695,000

**View** : <https://www.parkproperties.com.au/sale/nsw/east-ern-suburbs/alexandria/residential/apartment/2023088>



**Melissah McCaffery J P**  
**02 9565 5333**



BASEMENT

GROUND FLOOR

146/362 Mitchell Road, Alexandria

DISCLAIMER: THIS PLAN IS FOR ILLUSTRATIVE PURPOSES ONLY. DIMENSIONS ARE APPROXIMATE AND IT DOES NOT CONSTITUTE PART OF ANY LEGAL DOCUMENTS.

