



**6503/177-219 Mitchell Road Erskineville NSW**

2  2  1 

The features of this property make it one of the most desirable in the highly sought after Sydney Park Village. Positioned amongst landscaped gardens & resort style facilities, the home has instant appeal with a spacious open-plan design & crisp interiors. The package is completed with plantation shutters throughout & tree top views from every window.

Master bedroom with walk in robe & ensuite  
 Second double bedroom with built in wardrobes  
 Main bathroom with bath tub  
 Separate internal laundry with dryer  
 Gas kitchen with stainless steel appliances and dishwasher  
 Security building and under cover car space  
 Balcony with garden views

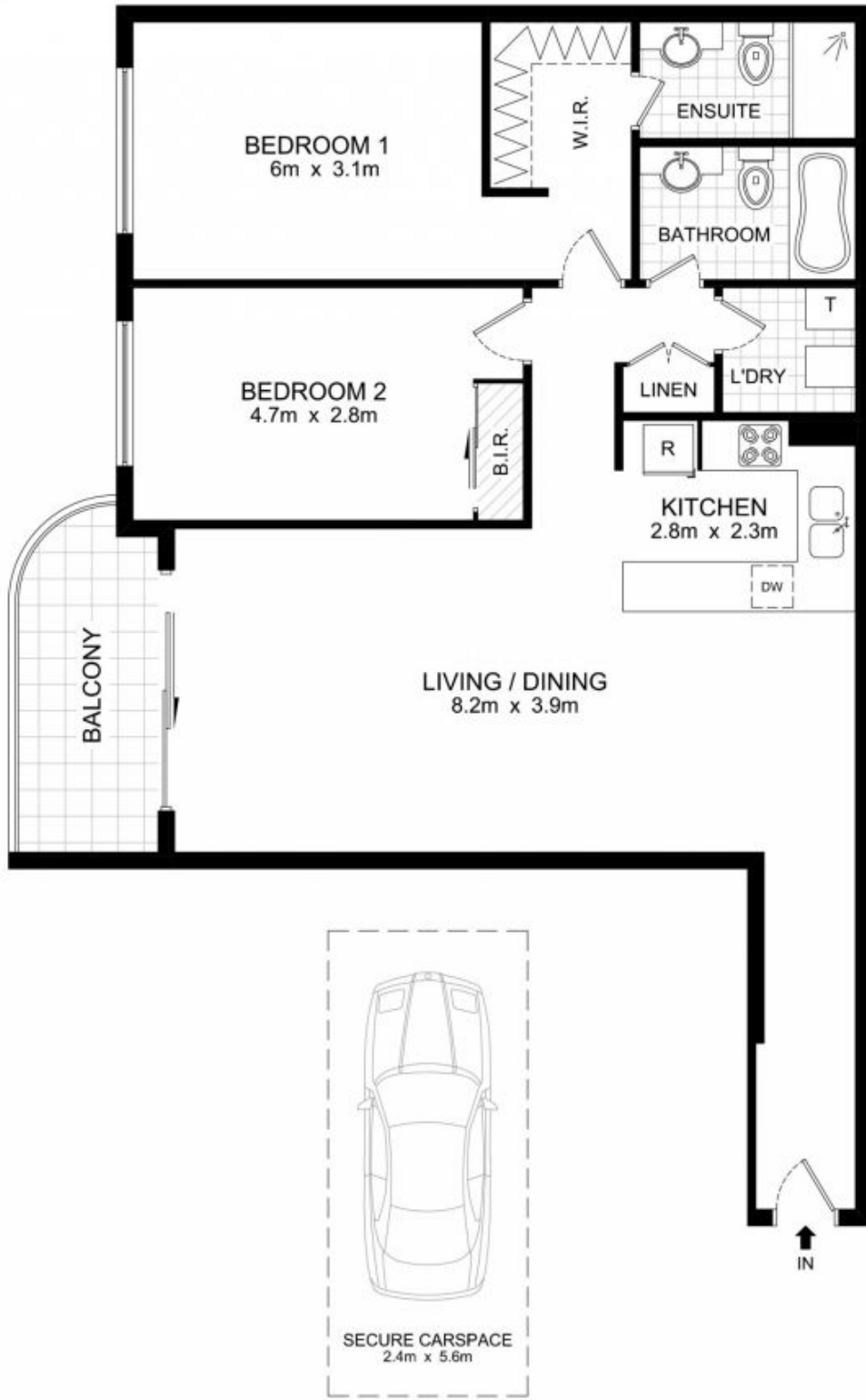
Placed just steps from the hip Erskineville Village, the eat

**Price** : \$ 720,000

**View** : <https://www.parkproperties.com.au/sale/nsw/inne-r-west/erskineville/residential/apartment/2008393>



**Melissah McCaffery J P**  
02 9565 5333



**6503/177-219 Mitchell Road, Erskineville**

DISCLAIMER: THIS PLAN IS FOR ILLUSTRATIVE PURPOSES ONLY. DIMENSIONS ARE APPROXIMATE AND IT DOES NOT CONSTITUTE PART OF ANY LEGAL DOCUMENTS.

