



14301/177-219 Mitchell Road Erskineville NSW

2  2  1 

Surrounded by coffee haunts and inviting cafes, this property offers indoor/outdoor entertaining at its best.

- Flexible study/dining room space
- Oversized gas kitchen with Corian benchtops
- Both bedrooms with built ins, main with ensuite and direct access to the balcony
- Sought after east facing location overlooking the facilities
- An abundance of natural light

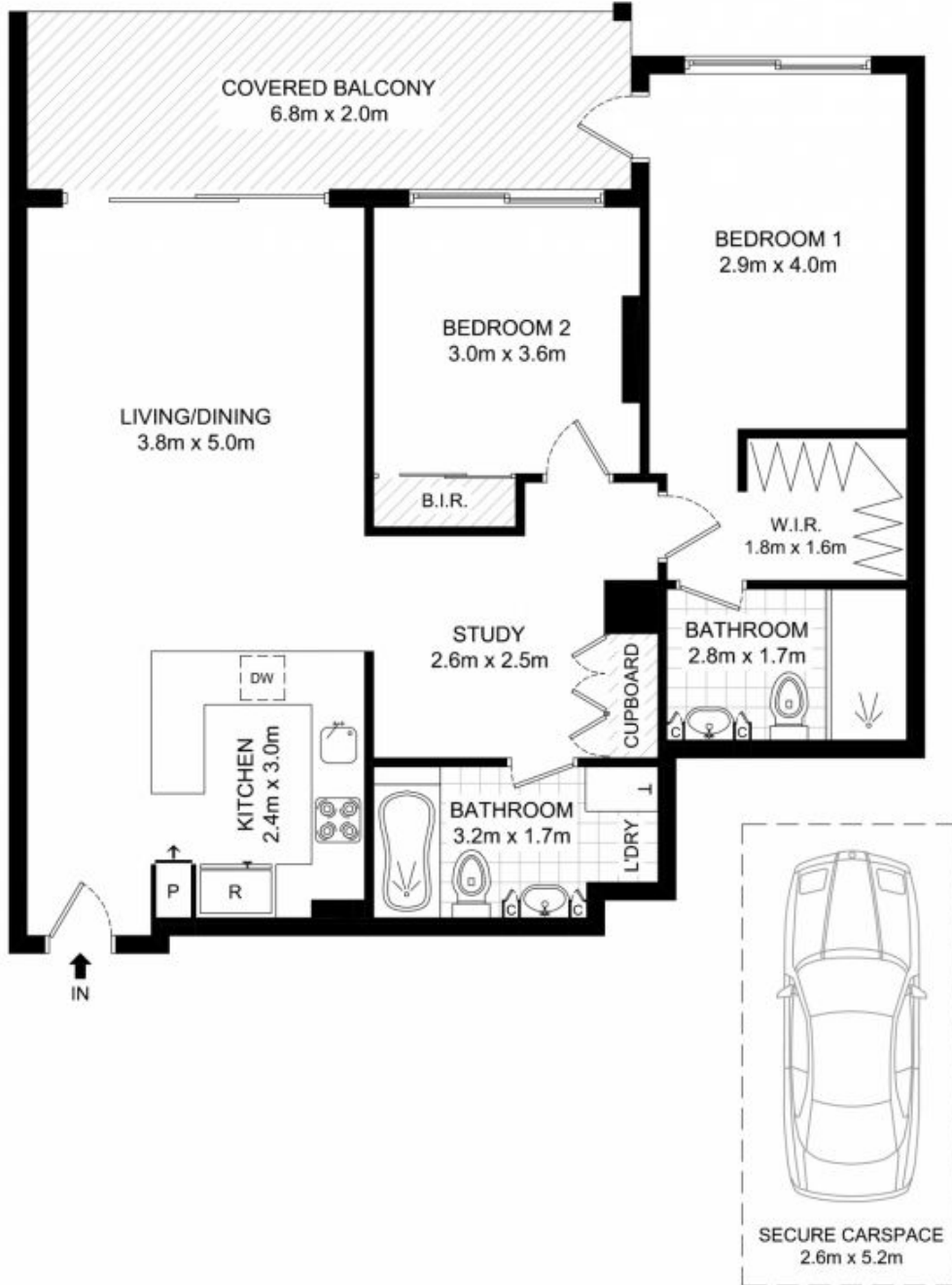
Only a short walk from the hip Erskineville Village, the urban oasis of Sydney Park, and the eat streets of King and Crown Streets, Sydney Park Village is one of the most sought after resort style buildings in inner Sydney. With incomparable facilities including outdoor pool, two tennis courts, gym and heated indoor pool immerse yourself in a sanctuary away from any urban buzz.

Price : \$ 757,000

View : <https://www.parkproperties.com.au/sale/nsw/inner-west/erskineville/residential/apartment/1883733>



Melissah McCaffery J P
02 9565 5333



LEVEL 3

BASEMENT

14301/177-219 Mitchell Road, Erskineville

DISCLAIMER: THIS PLAN IS FOR ILLUSTRATIVE PURPOSES ONLY. DIMENSIONS ARE APPROXIMATE AND IT DOES NOT CONSTITUTE PART OF ANY LEGAL DOCUMENTS.

