



2202/177-219 Mitchell Road Erskineville NSW

2  **2**  **1** 

Offering an outstanding Inner West address, this apartment boasts light filled, oversized living. A great buying opportunity for those seeking space, convenience & low maintenance living with amenities, nightlife, cafes and transport close by.

Oversized bedrooms both with built-ins, master with ensuite
Generous open plan living and separate dining/study area
Fully equipped gas kitchen with breakfast counter and internal laundry
Two balconies with access from lounge & dining areas
Intercom access & undercover parking on title
Ideal for owner occupiers and investors

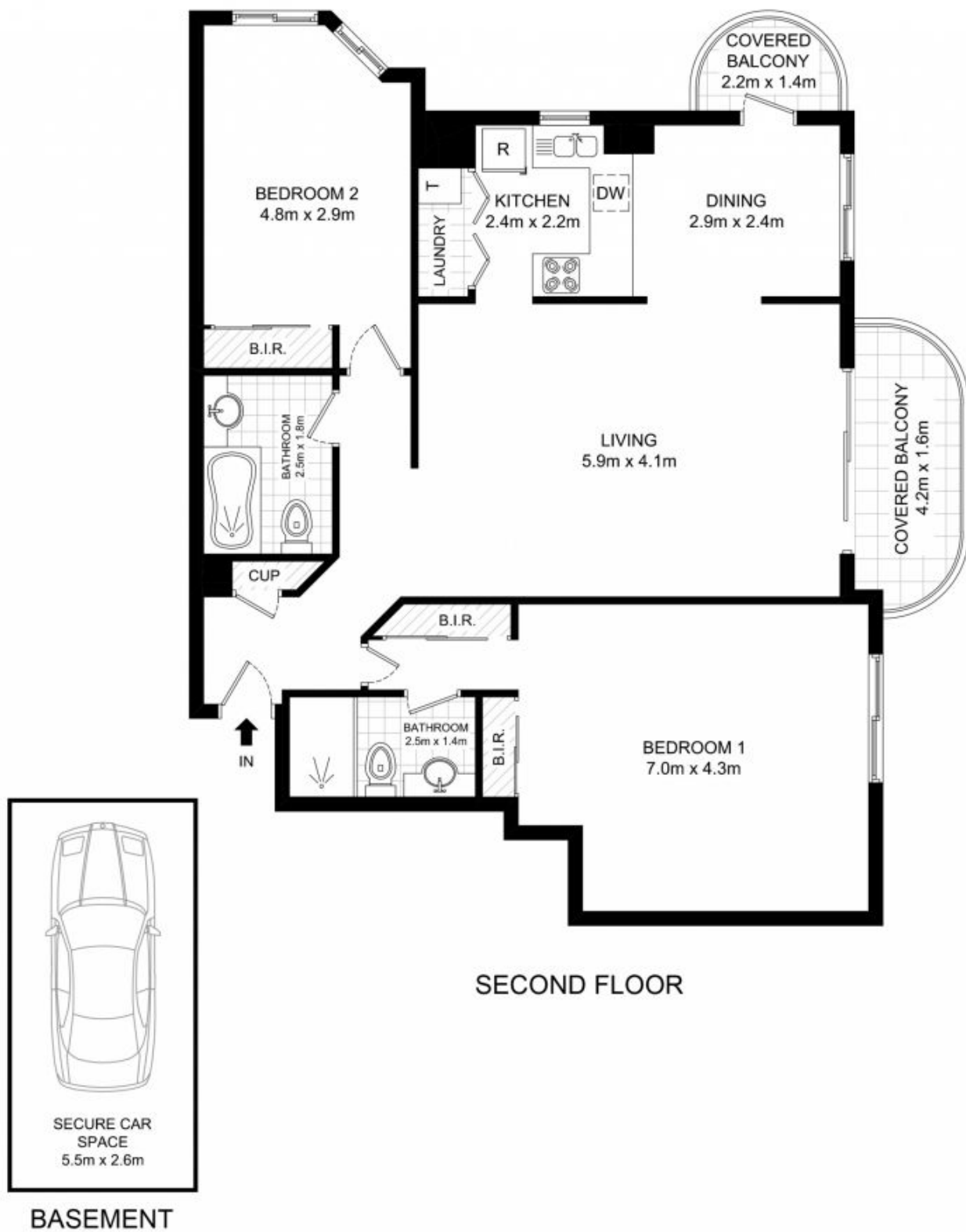
Price : \$ 710,000

View : <https://www.parkproperties.com.au/sale/nsw/inner-west/erskineville/residential/apartment/1839788>



Melissah McCaffery J P
02 9565 5333

Placed just steps from the hip Erskineville Village & the eat



2202/177-219 Mitchell Road, Erskineville

DISCLAIMER: THIS PLAN IS FOR ILLUSTRATIVE PURPOSES ONLY. DIMENSIONS ARE APPROXIMATE AND IT DOES NOT CONSTITUTE PART OF ANY LEGAL DOCUMENTS.

