



11401/177-219 Mitchell Road Erskineville NSW

2  2  1 

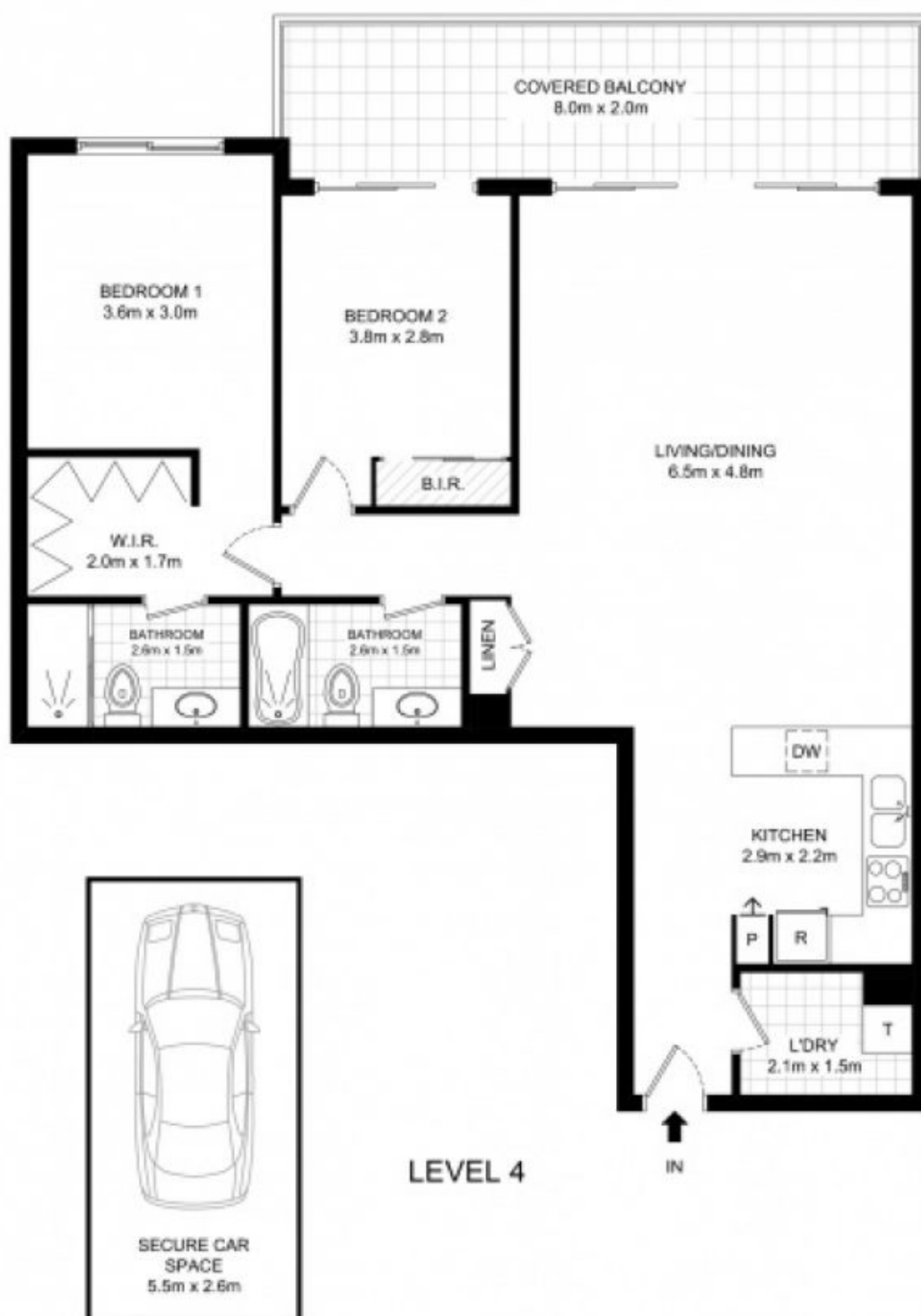
Located amongst the exemplary gardens of one of the best complexes in Sydney's inner west, this apartment offers the perfect combination of the Erskineville buzz & resort style living. With the most highly sought after aspect in the complex, this apartment is perched high on the 4th floor and offers 117sqm of low maintenance, comfortable living & entertaining space.

Price : \$ 776,000
Land Size : 117 sqm
View : <https://www.parkproperties.com.au/sale/nsw/inner-west/erskineville/residential/apartmen/1710165>

Sunny north facing balcony enjoying views of the complex gardens & facilities
 Two double bedrooms, master with walk in robes & ensuite
 Mosaic tiled bathroom with bathtub
 Open plan gas kitchen with stainless steel appliances including dishwasher
 Separate Internal laundry with dryer
 Large open plan living and dining with air conditioning
 Undercover security car space on title



Melissah McCaffery J P
02 9565 5333



LEVEL 4

BASEMENT

11401/177-219 Mitchell Road, Erskineville



DISCLAIMER: THIS PLAN IS FOR ILLUSTRATIVE PURPOSES ONLY. DIMENSIONS ARE APPROXIMATE AND IT DOES NOT CONSTITUTE PART OF ANY LEGAL DOCUMENTS.

