



**13406/177-219 Mitchell Road Erskineville NSW**

**3**  **2**  **2** 

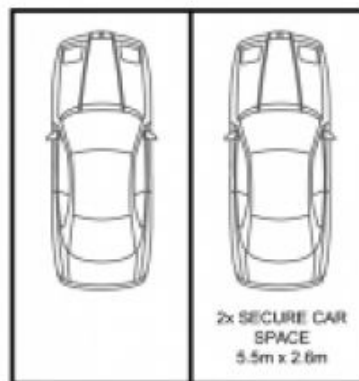
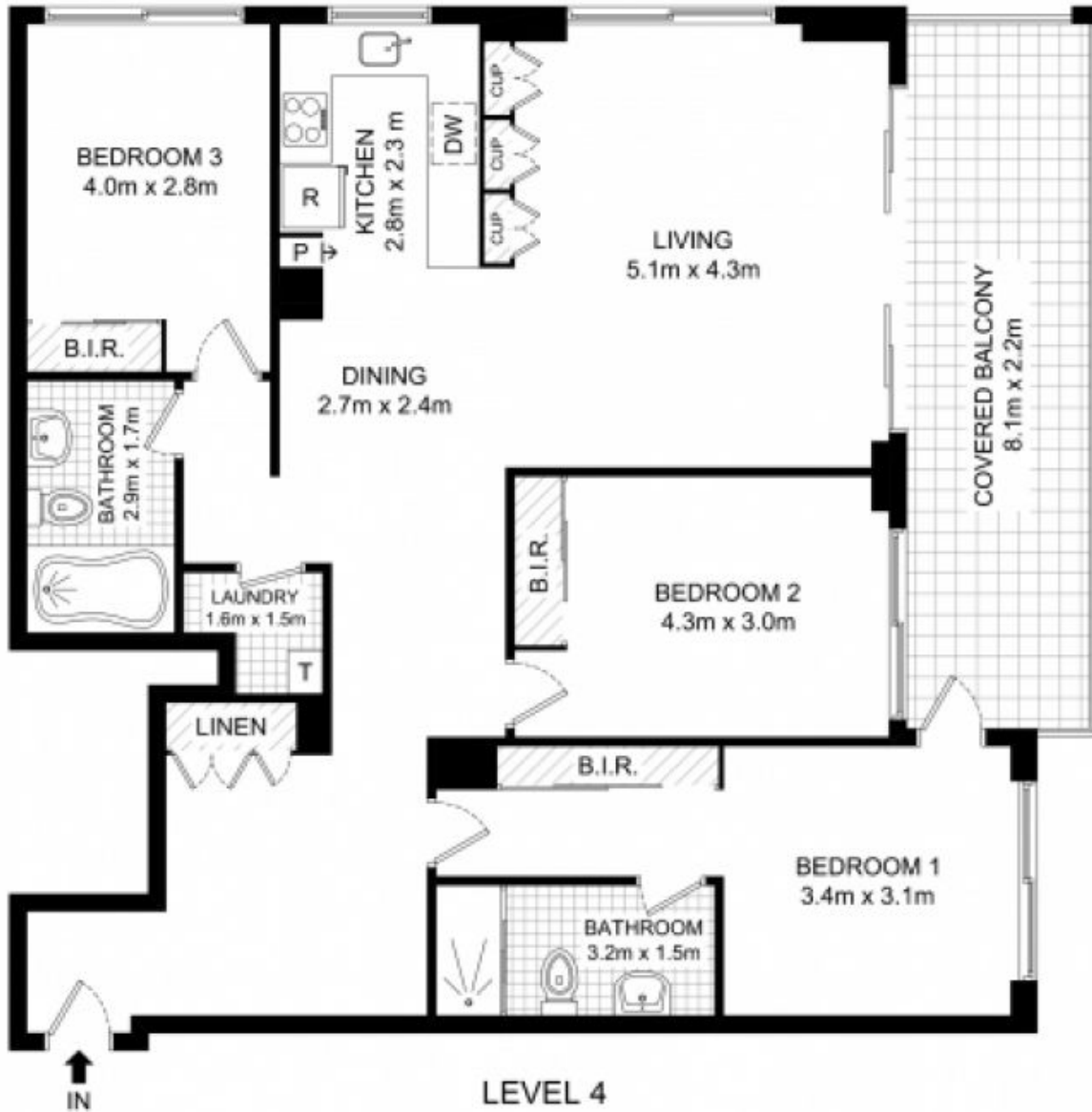
Offering 134sqm of living, this three bedroom plus study apartment within the highly regarded Sydney Park Village takes full advantage of its north facing corner position with windows wrapping around the apartment flooding it with natural light from morning to afternoon. This rare opportunity should not be missed!

**Price** : \$ 900,000  
**Land Size** : 161 sqm  
**View** : <https://www.parkproperties.com.au/sale/nsw/inner-west/erskineville/residential/apartmen/1619828>

Galley style gas kitchen with stainless steel appliances including dishwasher  
 Open plan living with defined lounge & dining spaces, north facing oversized balcony  
 3 double bedrooms all with built in robes & master with ensuite & balcony access  
 Separate internal laundry with dryer & linen cupboard  
 Mosaic ensuite & main bathroom with bathtub  
 Reverse cycle air conditioning, gas outlet for heating in lounge & fans in two bedrooms



**Melissah McCaffery J P**  
**02 9565 5333**



**BASEMENT**

**ADDRESS**

**13406/177-219 MITCHELL ROAD ERSKINEVILLE**



DISCLAIMER: THIS PLAN IS FOR ILLUSTRATIVE PURPOSES ONLY. DIMENSIONS ARE APPROXIMATE AND IT DOES NOT CONSTITUTE PART OF ANY LEGAL DOCUMENTS.

