






3/617 King Street NEWTOWN NSW

2  2  1 

This near new garden level apartment offers buyers a sleek contemporary home that is exceptionally quiet, yet perfectly located with a King Street address. It features light filled interiors, modern finishes & quality fittings throughout and an excellent lifestyle location close to all attractions.

Accommodation:

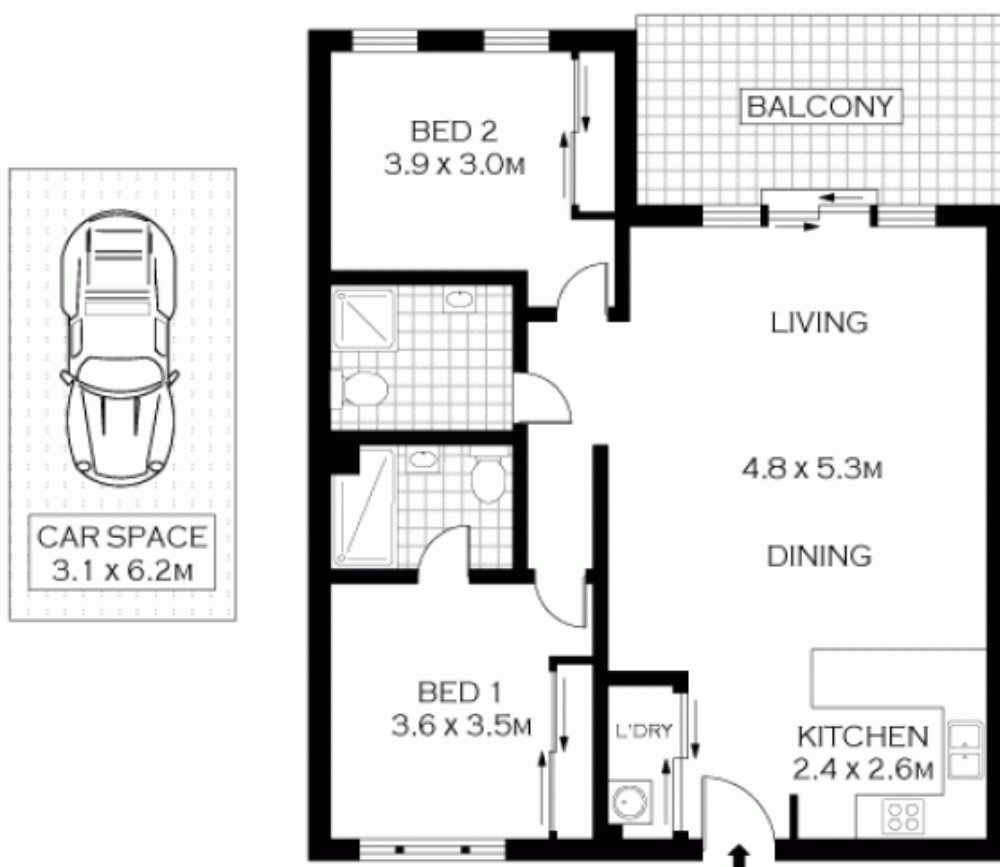
- * Near-new, garden level apartment
- * Fresh spacious interiors
- * Double bedrooms, both with built ins
- * 2 modern bathrooms
- * Open plan Caesar Stone gas kitchen
- * 22sqm security car space
- * Large internal laundry with dryer
- * Pet friendly, a/c, high ceilings with down lights
- * Central locale yet pleasantly quiet
- * Steps to cafes, Sydney Park and rail

Price : \$ 628,000

View : <https://www.parkproperties.com.au/sale/nsw/inner-west/newtown/residential/apartment/1548979>



Melissah McCaffery J P
02 9565 5333



GROUND FLOOR

NOTE :- SECURE CAR SPACE



PLANS SHOWN ONLY INDICATIVE OF LAYOUT. DIMENSIONS ARE APPROXIMATE.
FLOOR PLANS BY WWW.REALESTATEMARKETINGAUSTRALIA.COM.AU
REF. NO: 6573



3/617 KING STREET

NEWTOWN