




16307/177-219 Mitchell Road ERSKINEVILLE NSW

1  1  1 

With an abundance of natural light this spacious, well designed and versatile floor plan will attract lifestyle for the owner occupier or a very secure investment for the astute investor.

Accommodation

Large bedroom with built in wardrobe and access to the balcony

Versatile study room suitable for overnight guests or nursery

Open plan living leading out to sunny north facing balcony

Modern kitchen with stainless steel appliances & dishwasher

Modern bathroom with bath and internal laundry with dryer

Security car space on title located directly under the building near the lift

Close to transport, amenities and entertainment

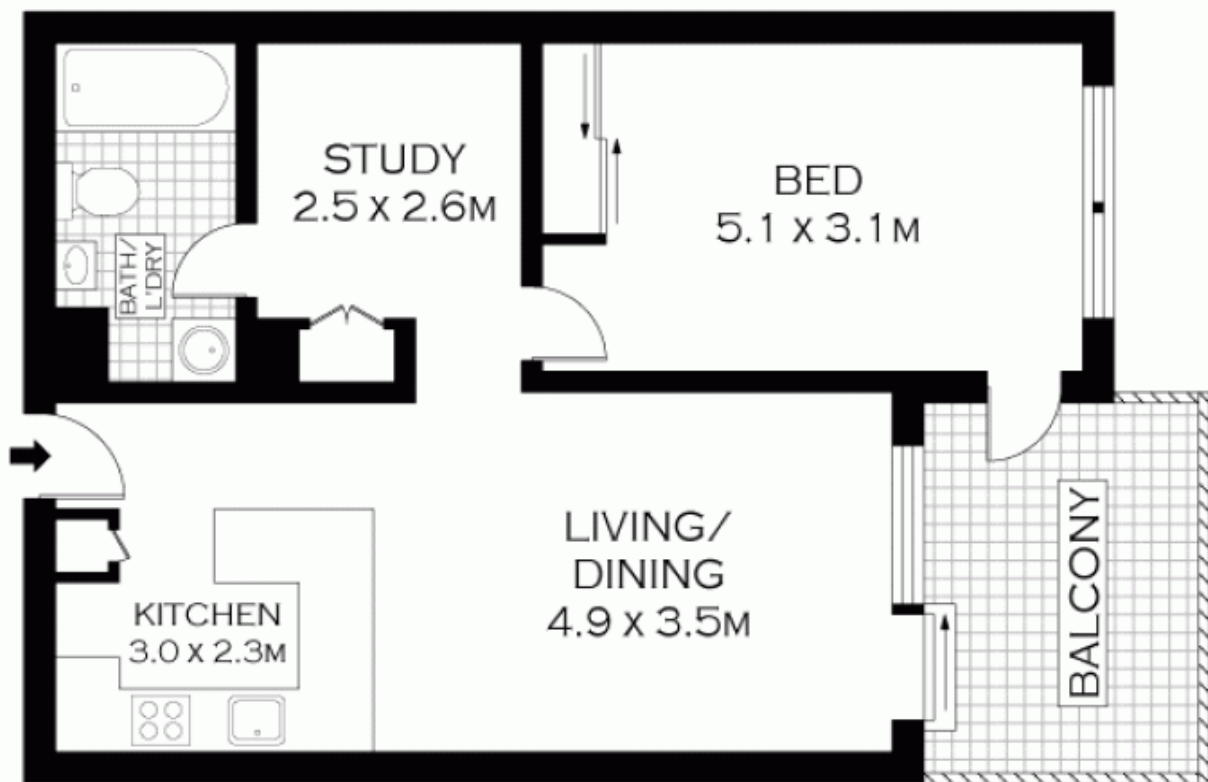
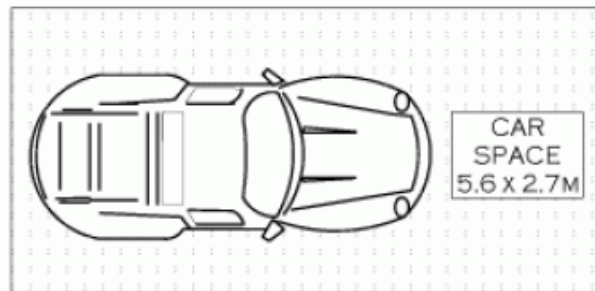
Price : \$ 515,000

Land Size : 78 sqm

View : <https://www.parkproperties.com.au/sale/nsw/inner-west/erskineville/residential/apartmen/1548978>



Melissah McCaffery J P
02 9565 5333



LEVEL THREE

NOTE :- SECURE CAR SPACE



PLANS SHOWN ONLY INDICATIVE OF LAYOUT. DIMENSIONS ARE APPROXIMATE.
Floor plans by www.realestatemarketingaustralia.com.au
Ref. No. 6527

PARK
PROPERTIES

ERSKINEVILLE 9565 5333

16307/177-219 MITCHELL ROAD

ERSKINEVILLE