




**14606/177-219 Mitchell Road ERSKINEVILLE NSW**

1  1 

With an abundance of natural light this spacious, well designed and versatile floor plan will attract lifestyle for the owner occupier or a very secure investment for the astute investor.

Bright and contemporary, this apartment's premier position in the heart of Erskineville guarantees a vibrant lifestyle.

#### Accommodation

Oversized main bedroom with walk in wardrobe and extra built in wardrobe and access to the balcony

West facing, glass framed balcony

Open plan lounge and dining area with air conditioning, access to the balcony

Modern kitchen with stainless steel appliances including dishwasher, pull out pantry and plenty of cupboard space

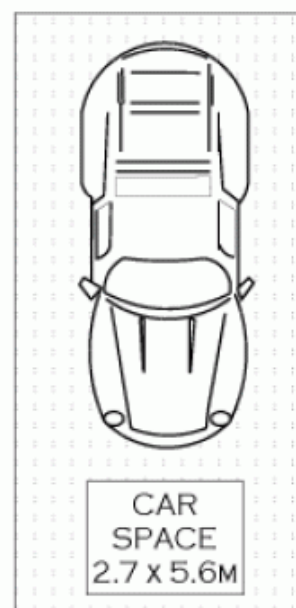
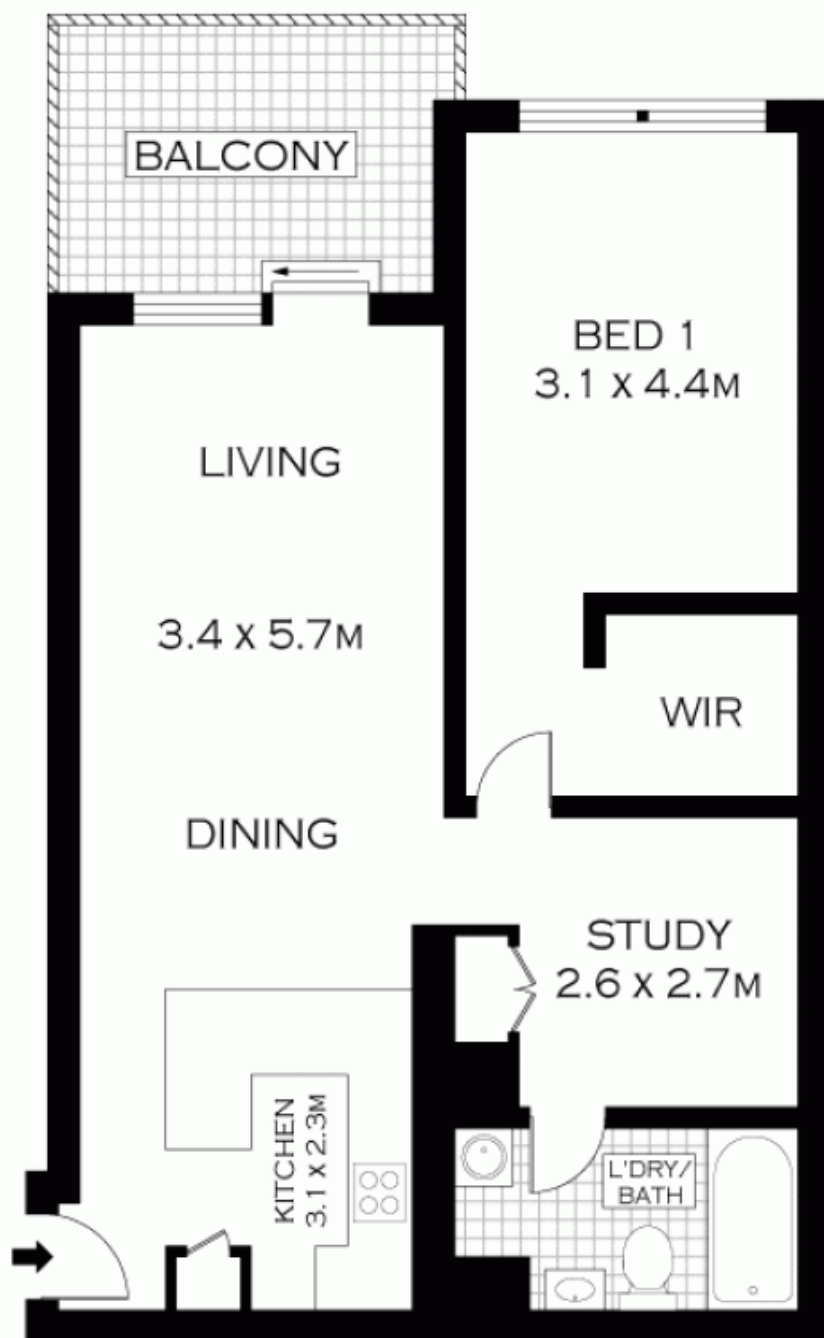
Modern bathroom with bath and internal laundry with dryer

**Price** : \$ 485,000

**View** : <https://www.parkproperties.com.au/sale/nsw/inner-west/erskineville/residential/apartment/1548974>



**Melissah McCaffery J P**  
**02 9565 5333**



## TOP FLOOR



PLANS SHOWN ONLY INDICATIVE OF LAYOUT. DIMENSIONS ARE APPROXIMATE.  
FLOOR PLANS BY WWW.REALESTATEMARKETINGAUSTRALIA.COM.AU  
REF. NO: 6313

**PARK**  
PROPERTIES

ERSKINEVILLE 9585 5333



14606/177-219 MITCHELL ROAD

ERSKINEVILLE