



**16404/177-219 Mitchell Road ERSKINEVILLE NSW**

**3  2  2 **

This three bedroom home is situated on a north facing corner position in the newest strata plan in the ever popular Sydney Park Village complex.

The home features an open plan living/dining and kitchen area and a wraparound terrace.

The property features a versatile 171 sqm floorplan (including parking).

Main bedroom with double built in wardrobe, access to the terrace and ensuite bathroom

Second and third bedrooms with built-in wardrobes

Modern main bathroom with bath and separate internal laundry with dryer

Side by side double car space

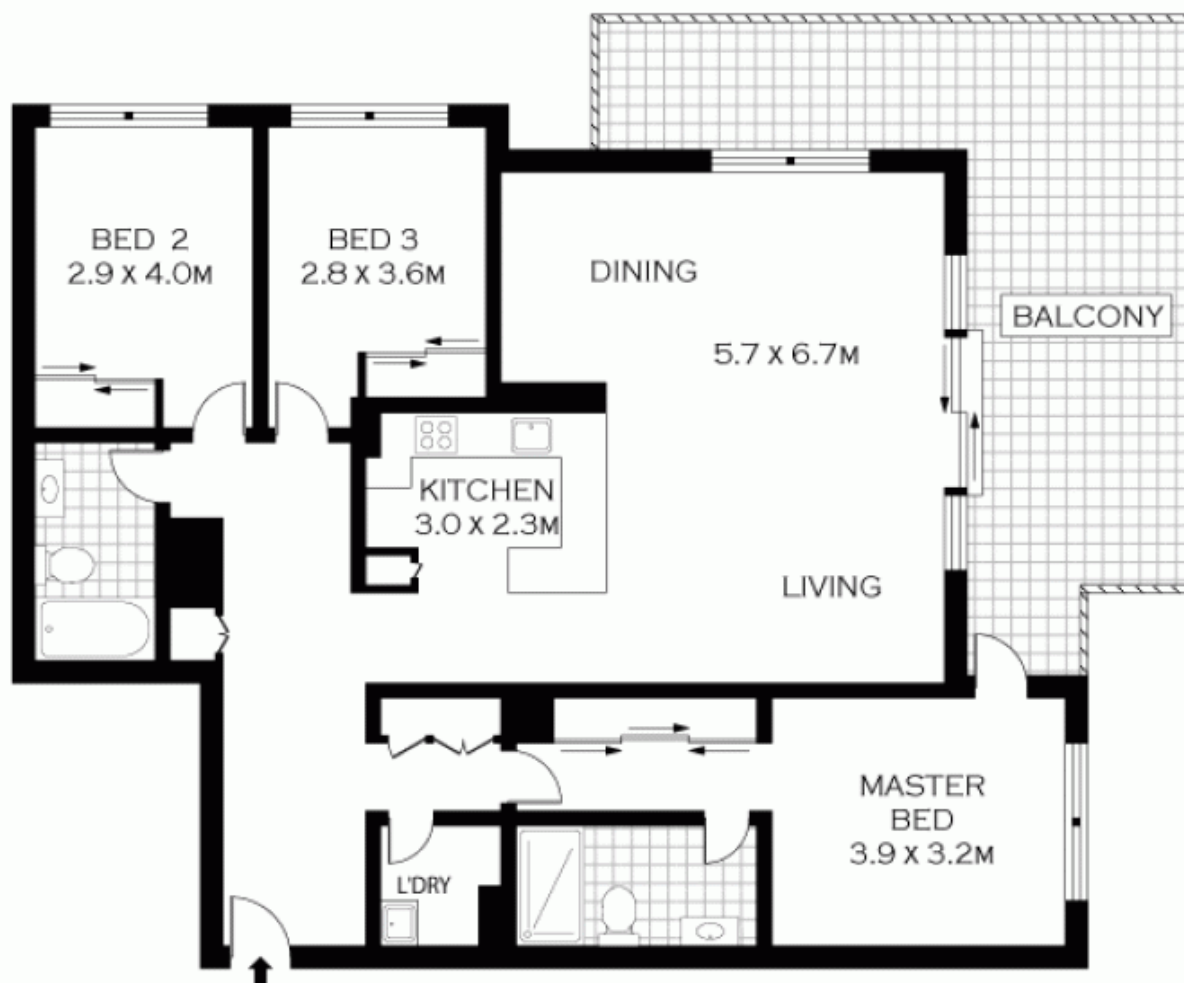
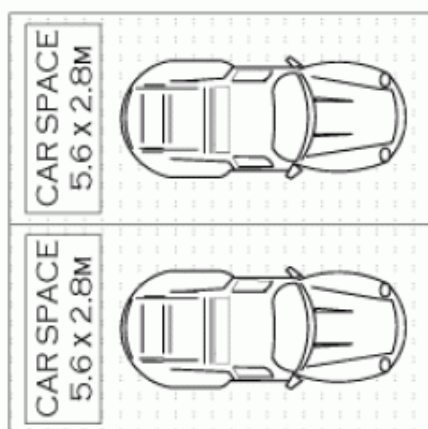
Modern open plan kitchen with gas cooking, great

**Price** : \$ 735,000

**View** : <https://www.parkproperties.com.au/sale/nsw/inner-west/erskineville/residential/apartment/1548972>



**Melissah McCaffery J P**  
**02 9565 5333**



LEVEL FOUR

NOTE : TWO SECURE CAR SPACES



PLANS SHOWN ONLY INDICATIVE OF LAYOUT. DIMENSIONS ARE APPROXIMATE.  
Floor plans by [www.realestatemarketingaustralia.com.au](http://www.realestatemarketingaustralia.com.au)  
Ref. No. 6220

**PARK**  
PROPERTIES

ERSKINEVILLE 9565 6333

16404/177 - 219 MITCHELL ROAD

ERSKINEVILLE