



11303/177-219 Mitchell Road ERSKINEVILLE NSW

2  2  1 

Open parkland views create a superb backdrop to this stylish security apartment set in the sought-after Sydney Park Village community. This vibrant complex boasts resort style facilities, modest levies and numerous amenities at its door. Conveniently located close to Sydney Airport, public transport links, King Street eateries and the CBD.

Accommodation

- 2 bedrooms with built-in wardrobes, main with walk-in wardrobe and ensuite bathroom
- Bright open plan living/dining area
- Spacious and well-presented kitchen with gas cooking and stainless steel appliances
- Large balcony with views over looking Sydney Park
- Separate laundry

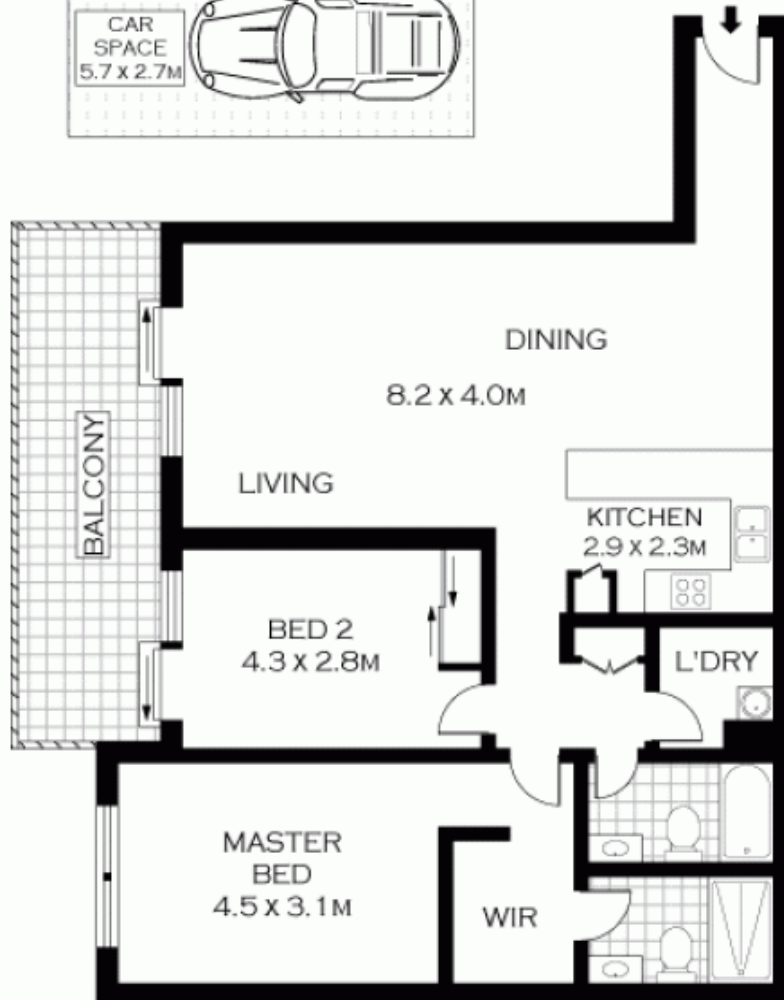
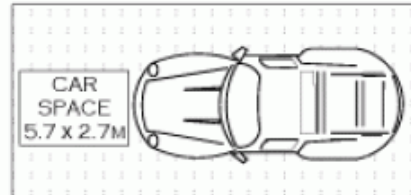
Lifestyle

Price : \$ 529,000

View : <https://www.parkproperties.com.au/sale/nsw/inner-west/erskineville/residential/apartment/1548966>



Melissah McCaffery J P
02 9565 5333



THIRD LEVEL



PLANS SHOWN ONLY INDICATIVE OF LAYOUT. DIMENSIONS ARE APPROXIMATE.
FLOOR PLANS BY WWW.REALESTATEMARKETINGAUSTRALIA.COM.AU
REF. NO: 6024

PARK
PROPERTIES

ERSKINEVILLE 9585 5333

11303/177-209 MITCHELL ROAD

ERSKINEVILLE