



3405/177-219 Mitchell Road ERSKINEVILLE NSW

2  2  1 

Open parkland views create a superb backdrop to this stylish security apartment set in the sought-after Sydney Park Village community.

This vibrant complex boasts resort style facilities, modest levies and numerous amenities at its door. Conveniently located close to Sydney Airport, public transport links, King Street eateries and the CBD.

Accommodation

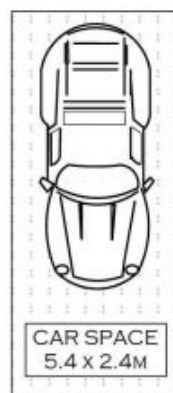
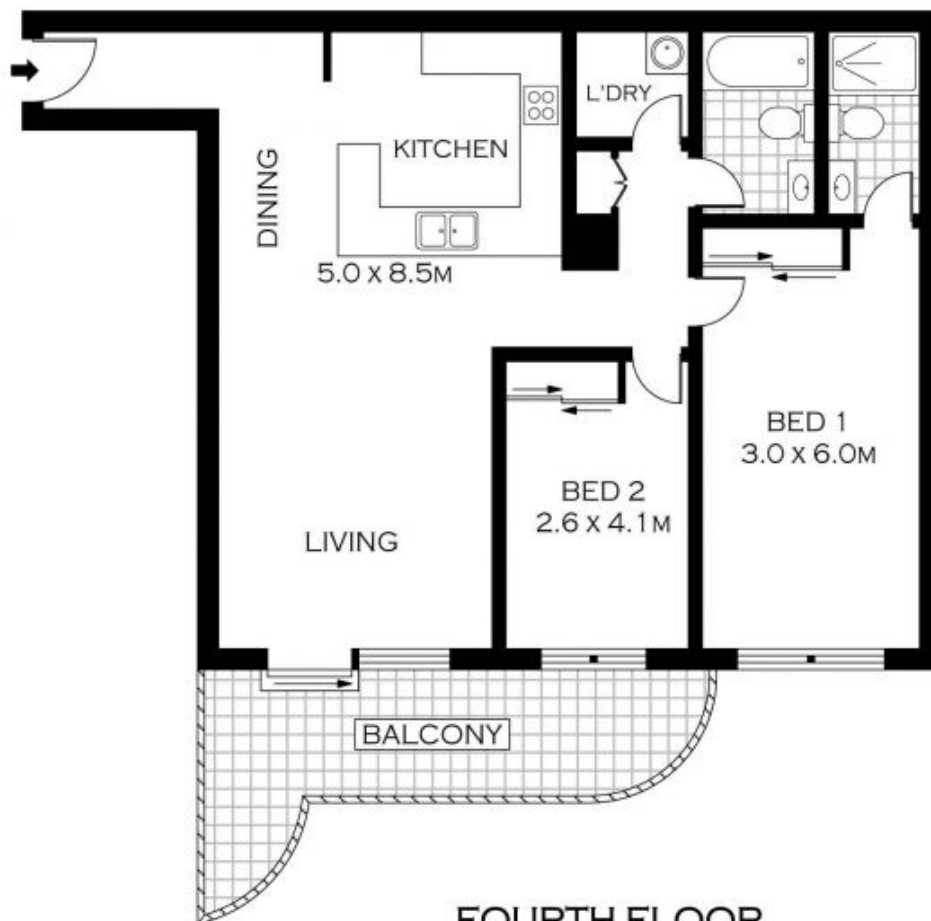
- 2 bedrooms with built-in wardrobes, main with walk-in wardrobe and ensuite bathroom
- Bright open plan living/dining area
- Spacious and well presented kitchen with gas cooking and stainless steel appliances
- Large balcony with views over looking Sydney Park
- Separate laundry

Price : \$ 560,000

View : <https://www.parkproperties.com.au/sale/nsw/inner-west/erskineville/residential/unit/1548962>



Melissah McCaffery J P
02 9565 5333



FOURTH FLOOR



PLANS SHOWN ONLY INDICATIVE OF LAYOUT. DIMENSIONS ARE APPROXIMATE.
Floor plans by www.realestatemarketingaustralia.com.au
Ref. No : 5798

NOTE : ONE SECURE CAR SPACE



PARK
PROPERTIES
SALES PTY LTD

ERSKINEVILLE 9565 5333

3405/177-219 MITCHELL ROAD

ERSKINEVILLE