






3407/177-219 Mitchell Road ERSKINEVILLE NSW

1  1  1 

Nestled within the popular Sydney Park Village, this East facing one bedroom apartment offers wide open parkland views which create a superb backdrop to this stylish security apartment.

Price : \$ 416,000

View : <https://www.parkproperties.com.au/sale/nsw/inne-r-west/erskineville/residential/unit/1548960>

Featuring open plan living and a modern kitchen equipped with gas cooking, stainless steel appliances and dishwasher. Conveniently located close to transport, shops and restaurants, this apartment is a great investment opportunity or ideal first home purchase.



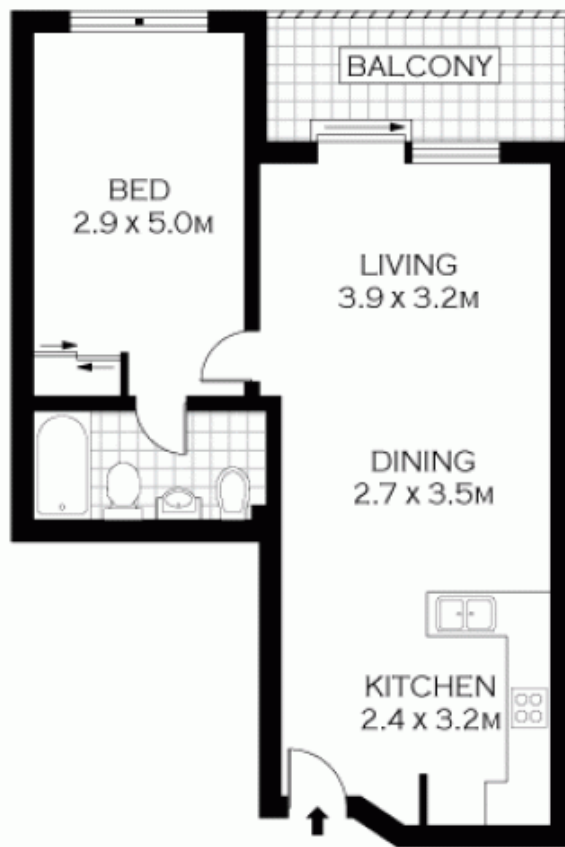
Melissah McCaffery J P
02 9565 5333

Accommodation

• Spacious modern kitchen with gas cooking and stainless steel appliances including dishwasher

• Bright open plan living/dining area that flows onto your private balcony

• Bedroom with built-in robe



LEVEL FOUR

NOTE :- SECURE CAR SPACE



PLANS SHOWN ONLY INDICATIVE OF LAYOUT. DIMENSIONS ARE APPROXIMATE.
FLOOR PLANS BY WWW.REALESTATMARKETINGAUSTRALIA.COM.AU
Ref. No: 5701

PARK
PROPERTIES

ERSKINEVILLE 9565 5333

3407/177 - 219 MITCHELL ROAD

ERSKINEVILLE