



9410/177-219 Mitchell Road ERSKINEVILLE NSW

1  1 

Exuding sophistication and privacy, this internal facing one bedroom apartment features a spacious open plan living area and a private entertainers balcony with an aspect which overlooks the manicured gardens. Only a short stroll to Erskineville Village bars and eateries and the lifestyle that King Street, Newtown has to offer.

Price : \$ 405,000

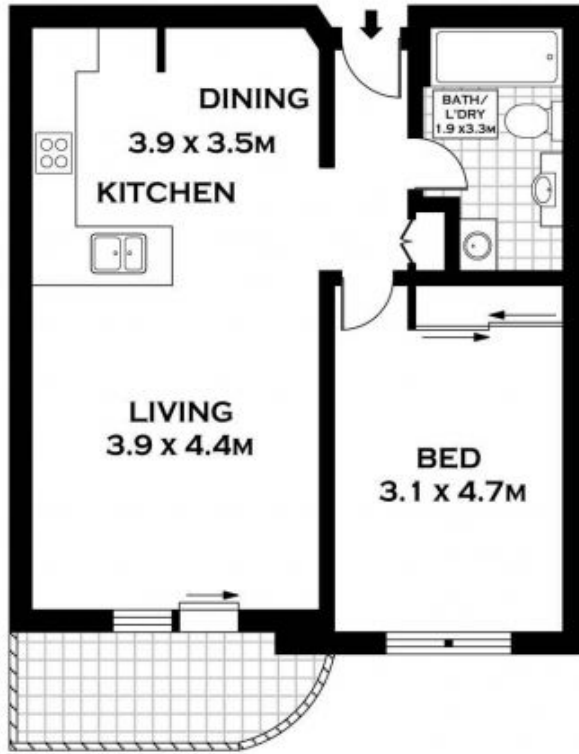
View : <https://www.parkproperties.com.au/sale/nsw/inne-r-west/erskineville/residential/apartment/1548955>

Accommodation

- Oversized bedroom with built-in
- Spacious modern kitchen with gas stainless steel appliances including dishwasher
- Bright open plan living/dining area that flows onto your private balcony
- Modern main bathroom with bath
- Internal laundry with dryer
- No road frontage



Melissah McCaffery J P
02 9565 5333



LEVEL FOUR



PLANS SHOWN ONLY INDICATIVE OF LAYOUT. DIMENSIONS ARE APPROXIMATE.
FLOOR PLANS BY WWW.REALESTATEMARKETINGAUSTRALIA.COM.AU
REF. NO: 5539



9410/177 - 219 MITCHELL ROAD

ERSKINEVILLE