



15302/177-219 Mitchell Road ERSKINEVILLE NSW

1  1  1 

Nestled within Sydney Park Village. This internal facing one bedroom apartment features spacious bright and airy open plan living, modern kitchen, stainless appliances and dish dishwasher. Private entertainer's balcony overlooking manicured gardens & tennis courts. Moments walk to public transport, Cafe's and Newtown's famous King Street restaurant & bar district.

Price : \$ 468,050

View : <https://www.parkproperties.com.au/sale/nsw/inne-r-west/erskineville/residential/unit/1548954>

Accommodation:

• Open plan living and dining flowing onto sundrenched balcony

• Stainless steel appliances with Granite bench tops

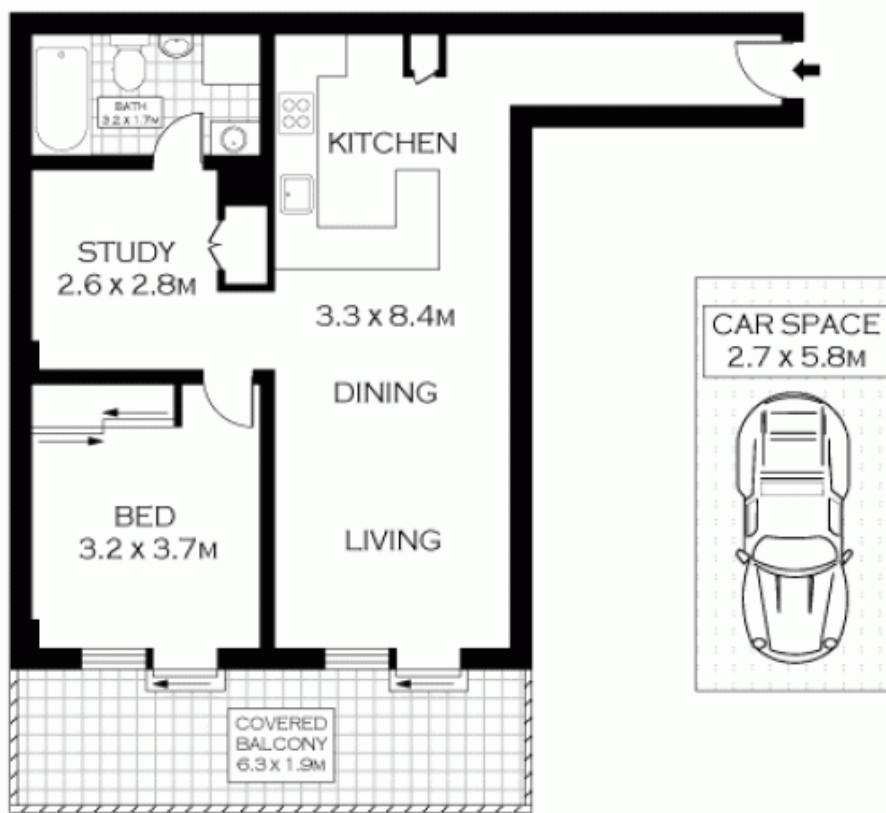
• Bedroom with large built in wardrobe and access to balcony

• Bathroom with full bathtub facility, separate internal laundry

• Air conditioning, lift access, security intercom



Melissah McCaffery J P
02 9565 5333



LEVEL THREE

NOTE : SECURE CAR SPACE



PLANS SHOWN ONLY INDICATIVE OF LAYOUT. DIMENSIONS ARE APPROXIMATE.
FLOOR PLANS BY WWW.REALESTATEMARKETINGAUSTRALIA.COM.AU
REF. NO: 5483

PARK PROPERTIES ERSKINEVILLE 9565 5333

15302/177 - 219 MITCHELL ROAD

ERSKINEVILLE