

12606/177-219 Mitchell Road ERSKINEVILLE NSW

1  1  1 

This one bedroom apartment offers a lifestyle second to none from this top floor apartment situated in the sought after Sydney Park Village. Internal facing North aspect overlooking lush, manicured gardens with views of the city skyline. Momentsâ?? walk to public transport & the lifestyle Erskineville has to offer.

Price : \$ 475,000

View : <https://www.parkproperties.com.au/sale/nsw/inne-r-west/erskineville/residential/unit/1548953>

Accommodation:

â?¢ Open plan living and dining flowing onto sundrenched balcony

â?¢ Stainless steel appliances with Granite bench tops

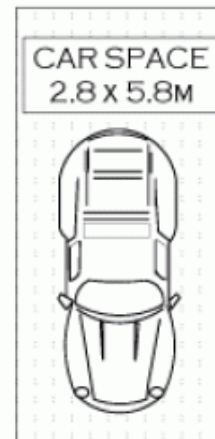
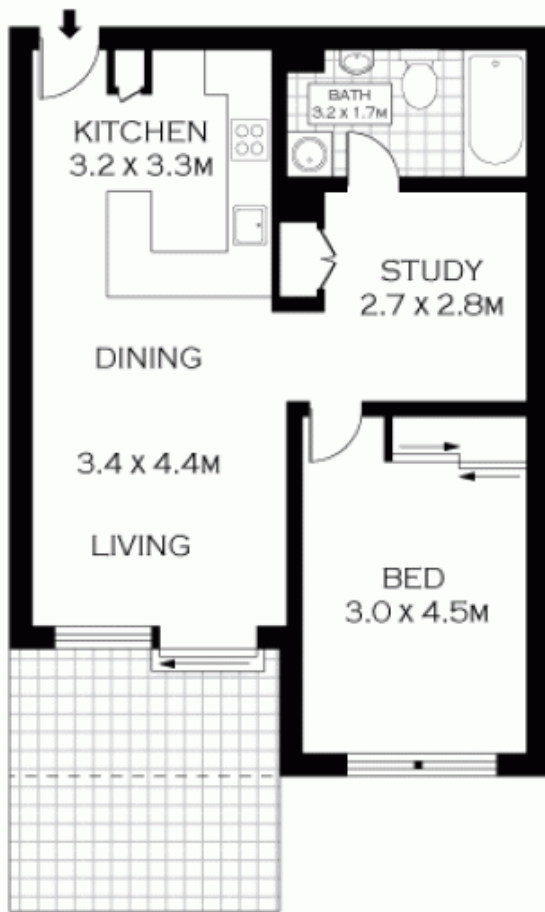
â?¢ Bedroom with large built in wardrobe and access to balcony

â?¢ Bathroom with full bathtub facility, separate internal laundry

â?¢ Lift access, security intercom



Melissah McCaffery J P
02 9565 5333



LEVEL SIX

NOTE : SECURE CAR SPACE



FLANS SHOWN ONLY INDICATIVE OF LAYOUT. DIMENSIONS ARE APPROXIMATE.
 FLOOR PLANS BY WWW.REALESTATEMARKETINGAUSTRALIA.COM.AU
 REF. No: 5481

PARK PROPERTIES ERSKINEVILLE 9565 5333

12606/177 - 219 MITCHELL ROAD

ERSKINEVILLE