



**6609/177-219 Mitchell Road Erskineville NSW**

2  2  1 

This sun drenched two bedroom apartment offers a lifestyle that is second to none. Situated in the sought after Sydney Park Village, this internal facing apartment has district & city views. Momentsâ?? walk to public transport & the lifestyle Erskineville has to offer.

Open plan living and dining flowing onto the North facing balcony

Modern gas kitchen with dishwasher

Two double bedrooms, main with walk in robe & ensuite

Main bathroom with bathtub & internal laundry facilities

Security undercover car space & video intercom

Steps to cafes, Sydney Park and transport

Placed just steps from the hip Erskineville Village, the urban oasis of Sydney Park, and the eat streets of King and Crown Streets Sydney Park Village is one of the most

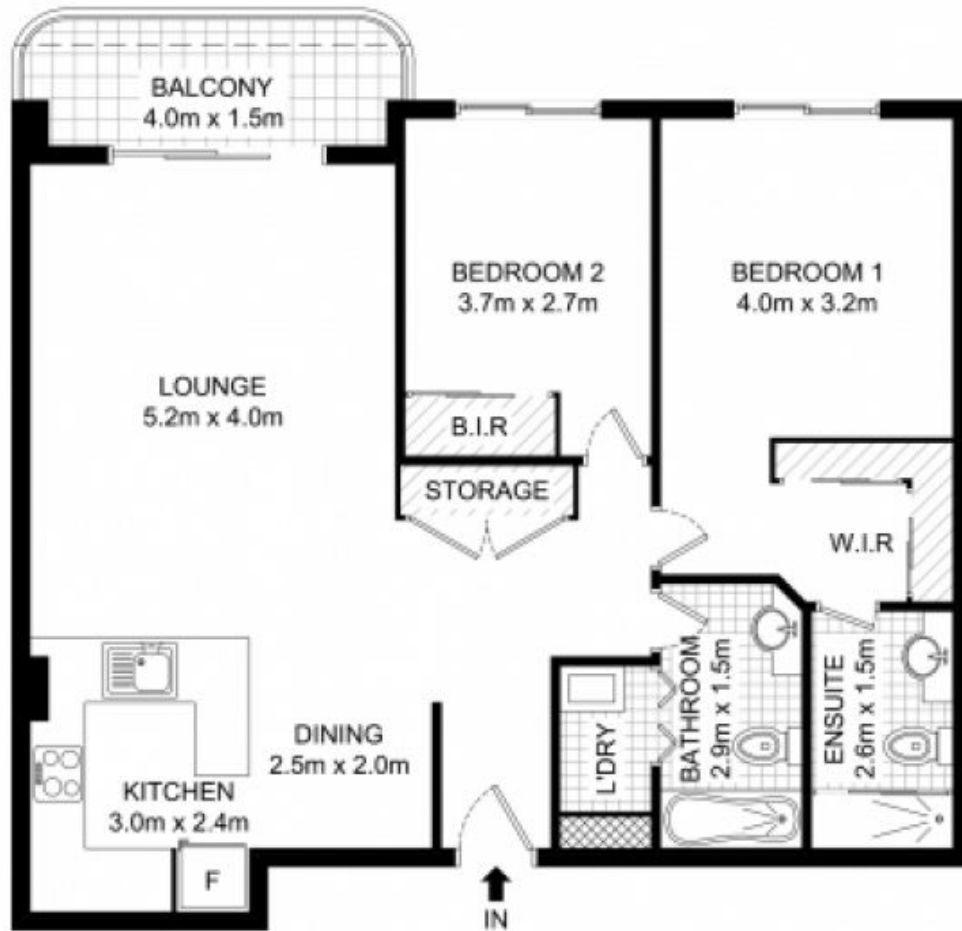
**Price** : \$ 715,000

**Land Size** : 103 sqm

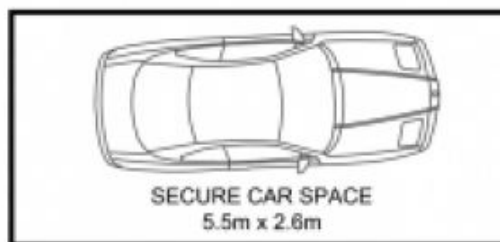
**View** : <https://www.parkproperties.com.au/sale/nsw/inner-west/erskineville/residential/apartmen/1537516>



**Melissah McCaffery J P**  
**02 9565 5333**



LEVEL 6



BASEMENT

6609/177-219 MITCHELL ROAD ERSKINEVILLE



DISCLAIMER: THIS PLAN IS FOR  
 ILLUSTRATIVE PURPOSES ONLY.  
 DIMENSIONS ARE APPROXIMATE AND  
 IT DOES NOT CONSTITUTE PART OF  
 ANY LEGAL DOCUMENTS.

