

**6311 177-219 Mitchell Road ERSKINEVILLE NSW**

2  2  1 

With garden views from every window this apartment will appeal to those seeking lifestyle & convenience within the highly respected Sydney Park Village in Erskineville.

**Price** : \$ 720,000

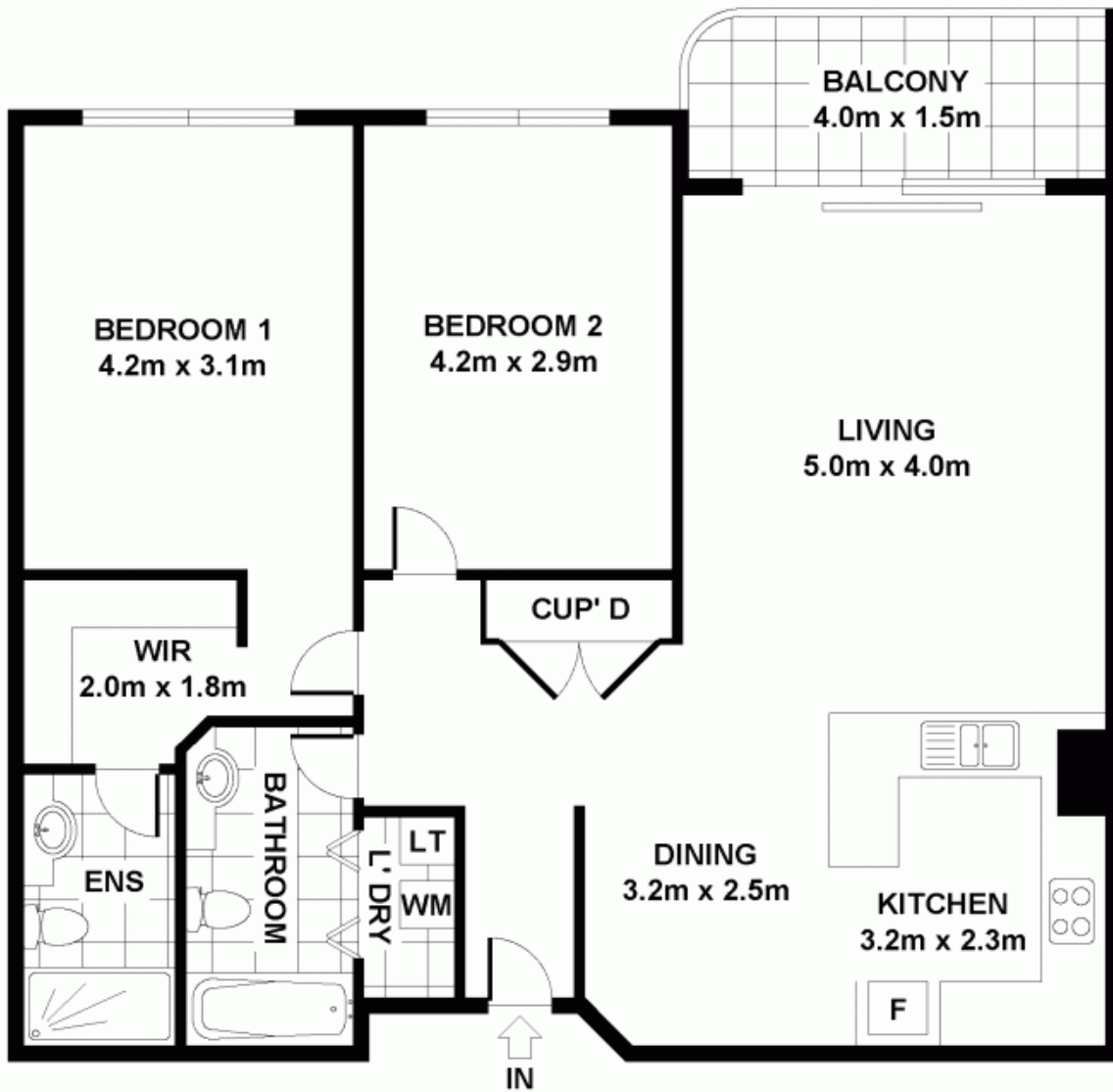
**View** : <https://www.parkproperties.com.au/sale/nsw/inner-west/erskineville/residential/apartment/1501340>

Open plan living with defined lounge & dining areas  
Timber look gas kitchen with s/s appliances inc dishwasher  
Master bedroom with Walk in robe & ensuite  
2nd double bedroom with Built in robe  
Main bathroom with tub & laundry facilities  
Security undercover parking

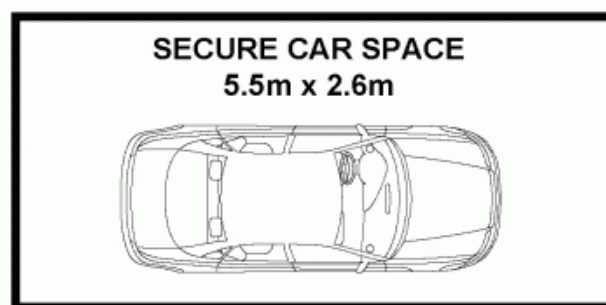


**Melissah McCaffery J P**  
**02 9565 5333**

Placed just steps from the hip Erskineville Village, the urban oasis of Sydney Park, and the eat streets of King and Crown Streets Sydney Park Village is one of the most sought after resort style buildings in inner Sydney. With incomparable facilities including outdoor pool, two tennis



**LEVEL 3**



**BASEMENT**

**ADDRESS**

**UNIT 6311/177 - 219 MITCHELL ROAD ERSKINEVILLE**

DISCLAIMER: THIS PLAN IS FOR ILLUSTRATIVE PURPOSES ONLY. DIMENSIONS ARE APPROXIMATE AND IT DOES NOT CONSTITUTE PART OF ANY LEGAL DOCUMENTS.

