



13202/177-219 Mitchell Road ERSKINEVILLE NSW

1  1  1 

Encompassing 106sqm this one bedroom + study courtyard apartment is generous in size and features! Offering open plan living leading out to a private entertainer's courtyard this apartment is ideal for those seeking space & lifestyle in an urban locale.

- * Large master bedroom with walk in robe & courtyard access
- * Versatile Study/home office also suitable for overnight guest room
- * Fully tiled bathroom with tub & laundry facilities
- * Modern gas kitchen with stainless steel appliances and dishwasher
- * Video intercom entry & secure car space on title
- * Strong rental return, currently leased at \$540 per week

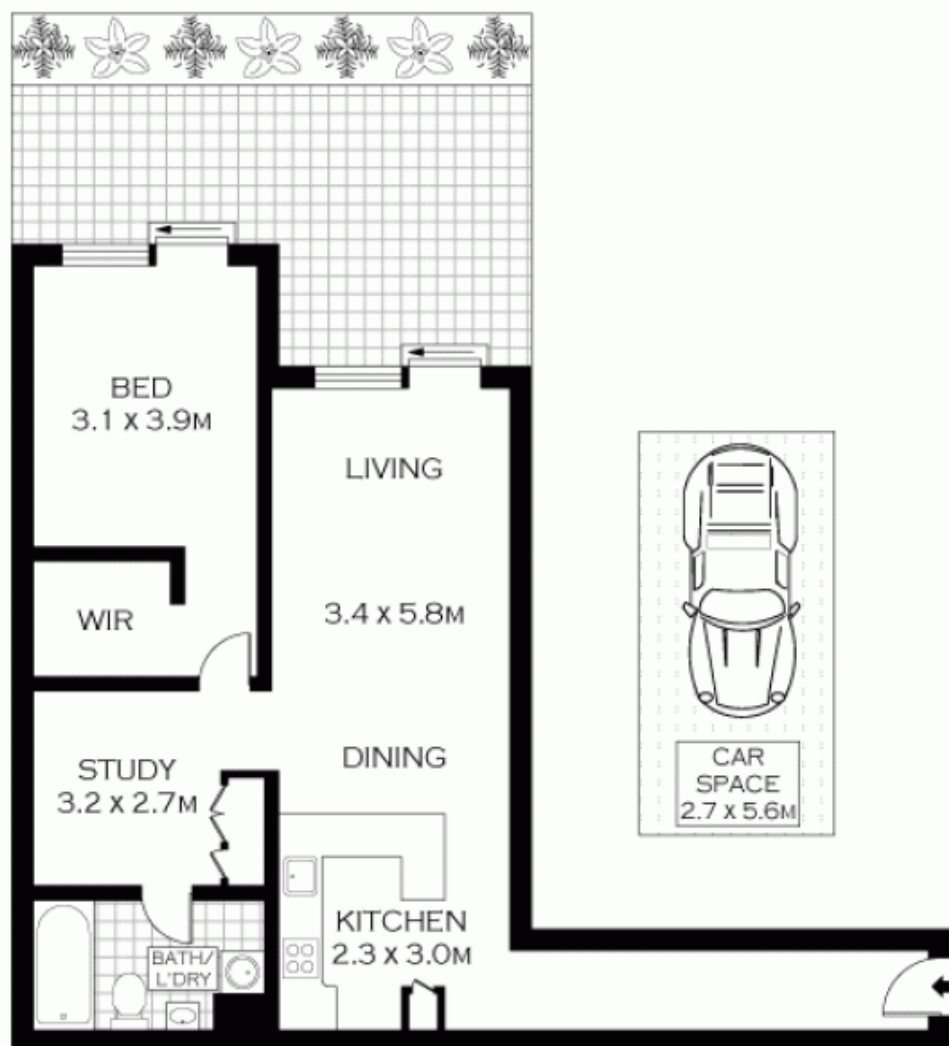
Price : \$ 548,000

View : <https://www.parkproperties.com.au/sale/nsw/inner-west/erskineville/residential/apartment/1432252>



Melissah McCaffery J P
02 9565 5333

Placed just steps from the hip Erskineville Village, the



LEVEL TWO



PLANS SHOWN ONLY INDICATIVE OF LAYOUT. DIMENSIONS ARE APPROXIMATE.
 Floor plans by www.realestatemarketingaustralia.com.au
 Ref. No: 7423

NOTE : ONE SECURE CAR SPACE



parkproperties
 (Austl) Pty Ltd

13202/177-219 MITCHELL ROAD

ERSKINEVILLE