



18506/177-219 Mitchell Road ERSKINEVILLE NSW

1  1  1 

Filled with natural light, this 5th floor apartment captures city skyline views from the north facing terrace. Providing low maintenance urban living, open plan layout, with a study area suitable from home office, overnight guests or nursery & highly prized security parking, an inspection is a must!

- * Large master bedroom with built in robe & terrace access
- * Versatile study/home office area with linen press
- * Full tiled bathroom with bathtub & laundry facilities
- * Modern gas kitchen with stainless steel appliances and dishwasher
- * Intercom entry & secure car space on title

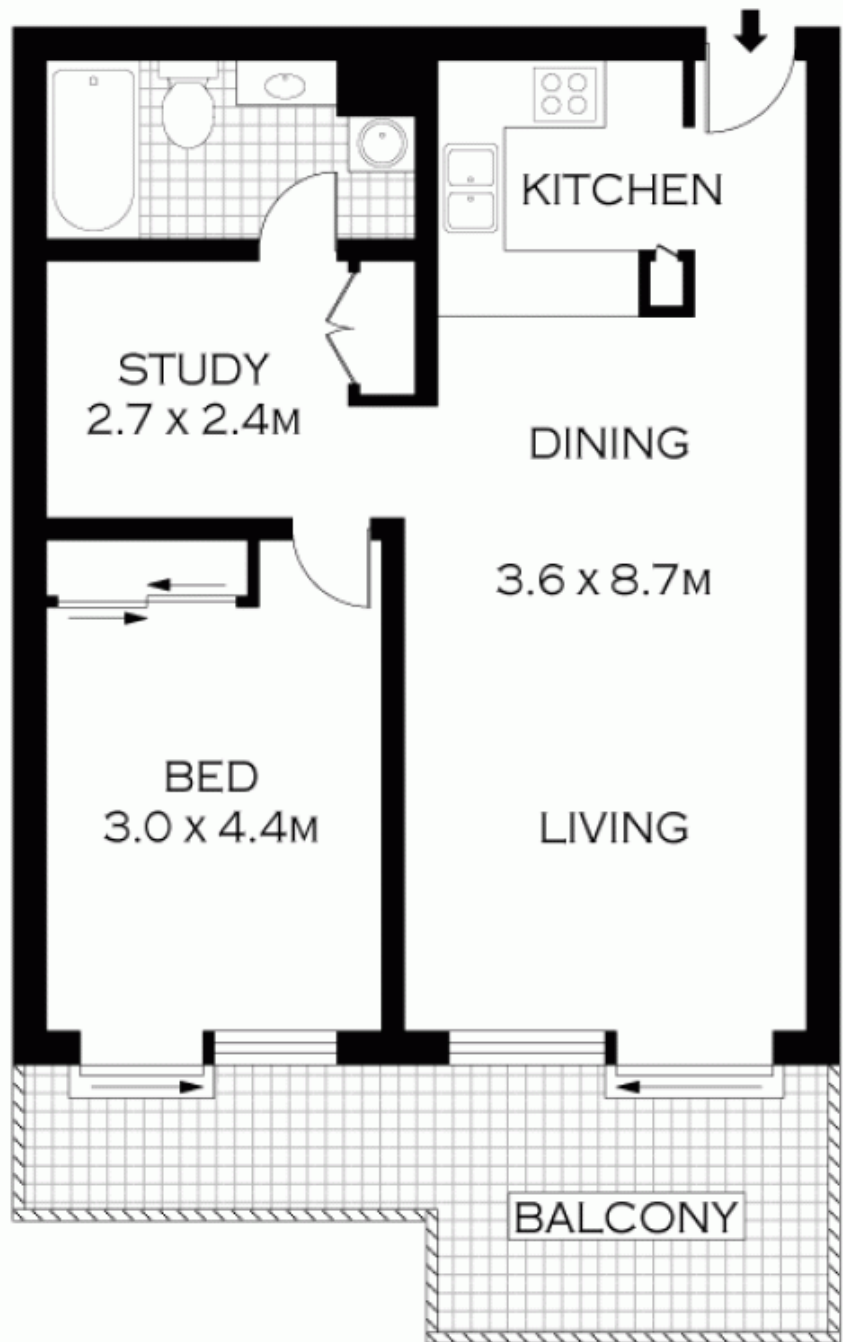
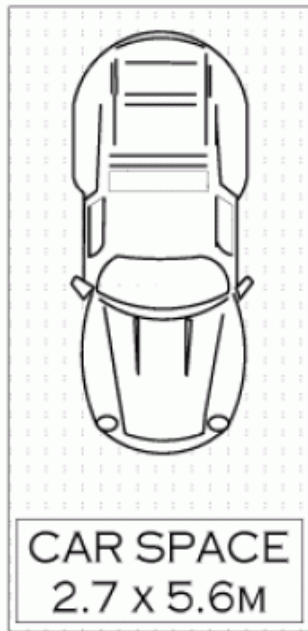
Placed just steps from the hip Erskineville Village, the urban oasis of Sydney Park, and the eat streets of King and Crown Streets Sydney Park Village is one of the most

Price : \$ 575,000

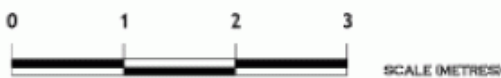
View : <https://www.parkproperties.com.au/sale/nsw/inne-r-west/erskineville/residential/apartment/1425574>



Melissah McCaffery J P
02 9565 5333



LEVEL THREE



NOTE :- ONE SECURE CAR SPACE



parkproperties
(Aust) Pty Ltd

PLANS SHOWN ONLY INDICATIVE OF LAYOUT. DIMENSIONS ARE APPROXIMATE.
Floor plans by www.realestatemarketingaustralia.com.au
Ref. No: 7425

18506/177-219 MITCHELL ROAD

ERSKINEVILLE